

Anti-Ki-67 Antibody

Our Anti-Ki-67 Antibody primary antibody from PhosphoSolutions is mouse monoclonal. It detects human
Catalog # AN1432

Specification

Anti-Ki-67 Antibody - Product Information

Application	WB, IHC
Primary Accession	P46013
Host	Mouse
Clonality	Monoclonal
Isotype	IgG1
Calculated MW	358694

Anti-Ki-67 Antibody - Additional Information

Gene ID **4288**

Other Names

Antigen identified by monoclonal antibody Ki 67 antibody, Antigen identified by monoclonal antibody Ki-67 antibody, Antigen KI-67 antibody, Antigen KI67 antibody, Antigen Ki67 antibody, Ki67 antibody, KI67_HUMAN antibody, KIA antibody, Marker of proliferation Ki-67 antibody, MIB 1 antibody, MIB antibody, MKI67 antibody, PPP1R105 antibody, Proliferation marker protein Ki-67 antibody, Proliferation related Ki 67 antigen antibody, Protein phosphatase 1 regulatory subunit 105 antibody, RP11-380J17.2 antibody

Target/Specificity

Ki-67 is a nuclear protein that is considered to be essential for cellular proliferation since it is expressed only in active phases of the cell cycle (G1, S, G2 and mitosis) but not in resting phase G0 (Scholzen & Gerdes 2000). Ki-67 antibodies have therefore been widely used as markers of cell growth. Ki-67 has further been identified as a predicative and prognostic marker in breast, lung, cervical and other cancers (Yerushalmi et al., 2010; Folescu et al., 2018; Das et al., 2018).

Format

Protein G Purified

Storage

Maintain refrigerated at 2-8°C for up to 6 months. For long term storage store at -20°C in small aliquots to prevent freeze-thaw cycles.

Precautions

Anti-Ki-67 Antibody is for research use only and not for use in diagnostic or therapeutic procedures.

Shipping

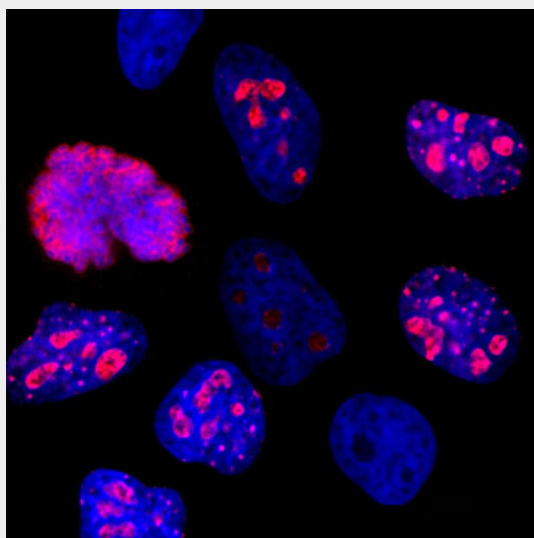
Blue Ice

Anti-Ki-67 Antibody - Protocols

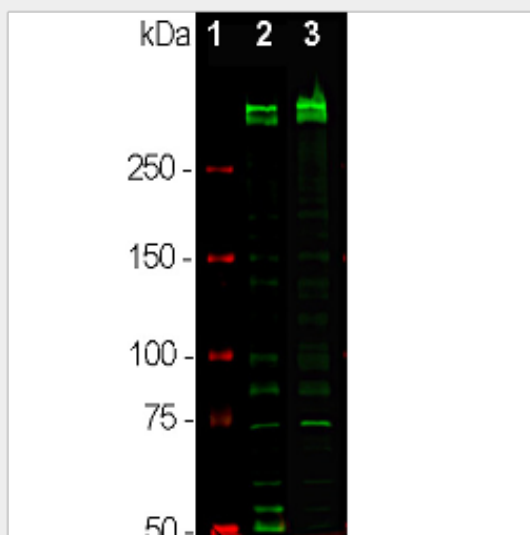
Provided below are standard protocols that you may find useful for product applications.

- [Western Blot](#)
- [Blocking Peptides](#)
- [Dot Blot](#)
- [Immunohistochemistry](#)
- [Immunofluorescence](#)
- [Immunoprecipitation](#)
- [Flow Cytometry](#)
- [Cell Culture](#)

Anti-Ki-67 Antibody - Images



Immunostaining of HeLa cells showing specific labeling of Ki-67 in the nucleoli of rapidly dividing cells, (1:2000) in red. DNA is stained blue.



Western blot of dividing HeLa cell cultures (2) and HEK293 cell cultures (3) showing specific immunolabeling of the ~345/395 Ki-67 isoforms.

Anti-Ki-67 Antibody - Background

Ki-67 is a nuclear protein that is considered to be essential for cellular proliferation since it is

expressed only in active phases of the cell cycle (G1, S, G2 and mitosis) but not in resting phase G0 (Scholzen & Gerdes 2000). Ki-67 antibodies have therefore been widely used as markers of cell growth. Ki-67 has further been identified as a predicative and prognostic marker in breast, lung, cervical and other cancers (Yerushalmi et al., 2010; Folescu et al., 2018; Das et al., 2018).