

## Anti-Insulin Receptor (Thr1160) Antibody

Our Anti-Insulin Receptor (Thr1160) rabbit polyclonal phosphospecific primary antibody from PhosphoS

Catalog # AN1428

### Specification

---

#### Anti-Insulin Receptor (Thr1160) Antibody - Product Information

Primary Accession	<a href="#">P06213</a>
Host	Rabbit
Clonality	Polyclonal
Isotype	IgG
Calculated MW	156333

#### Anti-Insulin Receptor (Thr1160) Antibody - Additional Information

Gene ID **3643**

##### Other Names

CD220 antibody, HHF5 antibody, human insulin receptor antibody, Insr antibody, INSR\_HUMAN antibody, Insulin receptor subunit beta antibody, IR 1 antibody, IR antibody, IR-1 antibody, IR1 antibody,

##### Target/Specificity

The insulin receptor (IR) is a well-studied receptor tyrosine kinase composed of two  $\alpha$  subunits, responsible for the extracellular insulin binding site, and two  $\beta$  subunits, responsible for intracellular protein kinase activity (Endemann et al., 1990, Chiu et al., 2010). The binding of insulin to the  $\alpha$  subunits activates the intrinsic kinase activity located in the  $\beta$  subunits and subsequently initiates a cascade of phosphorylation events causing major conformational changes in the activation loop of the kinase domain, which lead to different biological functions (Chiu et al., 2010). It has been hypothesized that Thr-1160 phosphorylation affects or is affected by Tyr-1158/62/63 phosphorylation and that the conformation of Thr-1160 and pThr-1160 is likely to be affected by the phosphorylation status of the surrounding tyrosines.

##### Format

Antigen Affinity Purified from Pooled Serum

##### Storage

Maintain refrigerated at 2-8°C for up to 6 months. For long term storage store at -20°C in small aliquots to prevent freeze-thaw cycles.

##### Precautions

Anti-Insulin Receptor (Thr1160) Antibody is for research use only and not for use in diagnostic or therapeutic procedures.

##### Shipping

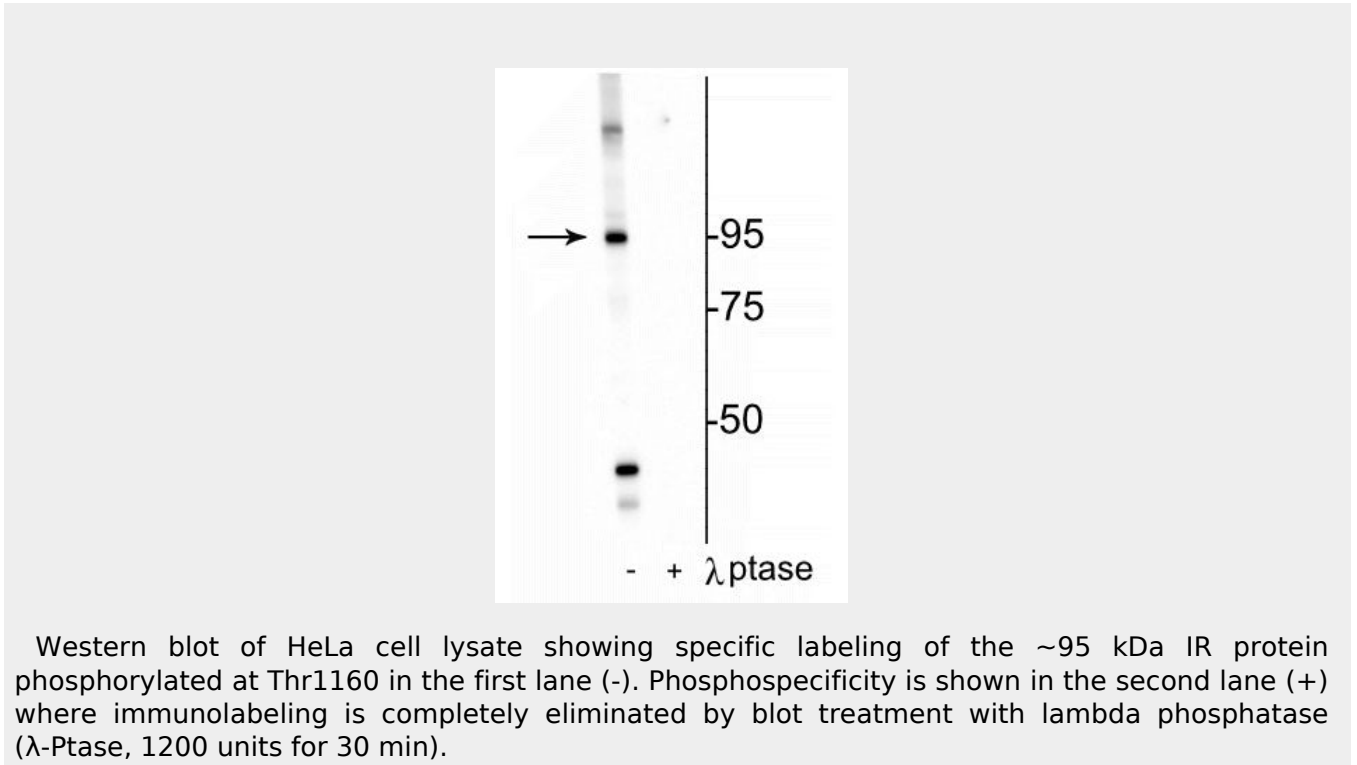
Blue Ice

#### Anti-Insulin Receptor (Thr1160) Antibody - Protocols

Provided below are standard protocols that you may find useful for product applications.

- [Western Blot](#)
- [Blocking Peptides](#)
- [Dot Blot](#)
- [Immunohistochemistry](#)
- [Immunofluorescence](#)
- [Immunoprecipitation](#)
- [Flow Cytometry](#)
- [Cell Culture](#)

#### Anti-Insulin Receptor (Thr1160) Antibody - Images



Western blot of HeLa cell lysate showing specific labeling of the ~95 kDa IR protein phosphorylated at Thr1160 in the first lane (-). Phosphospecificity is shown in the second lane (+) where immunolabeling is completely eliminated by blot treatment with lambda phosphatase ( $\lambda$ -Ptase, 1200 units for 30 min).

#### Anti-Insulin Receptor (Thr1160) Antibody - Background

The insulin receptor (IR) is a well-studied receptor tyrosine kinase composed of two  $\alpha$  subunits, responsible for the extracellular insulin binding site, and two  $\beta$  subunits, responsible for intracellular protein kinase activity (Endemann et al., 1990, Chiu et al., 2010). The binding of insulin to the  $\alpha$  subunits activates the intrinsic kinase activity located in the  $\beta$  subunits and subsequently initiates a cascade of phosphorylation events causing major conformational changes in the activation loop of the kinase domain, which lead to different biological functions (Chiu et al., 2010). It has been hypothesized that Thr-1160 phosphorylation affects or is affected by Tyr-1158/62/63 phosphorylation and that the conformation of Thr-1160 and pThr-1160 is likely to be affected by the phosphorylation status of the surrounding tyrosines.