

## Anti-c-FOS Antibody

Our Anti-c-FOS primary antibody from PhosphoSolutions is mouse monoclonal. It detects bovine, human, Catalog # AN1333

### Specification

---

#### Anti-c-FOS Antibody - Product Information

Application	WB, IHC
Primary Accession	<a href="#">P01100</a>
Reactivity	Bovine, Chicken
Host	Mouse
Clonality	Monoclonal
Isotype	IgG1
Calculated MW	40695

#### Anti-c-FOS Antibody - Additional Information

Gene ID **2353**

##### Other Names

Activator protein 1 antibody, AP 1 antibody, C FOS antibody, Cellular oncogene c fos antibody, Cellular oncogene fos antibody, FBJ murine osteosarcoma viral (v fos) oncogene homolog (oncogene FOS) antibody, FBJ murine osteosarcoma viral oncogene homolog antibody, FBJ murine osteosarcoma viral v fos oncogene homolog antibody, FBJ Osteosarcoma Virus antibody, FOS antibody, FOS protein antibody, FOS\_HUMAN antibody, G0 G1 switch regulatory protein 7 antibody, G0/G1 switch regulatory protein 7 antibody, G0S7 antibody, Oncogene FOS antibody, p55 antibody, proto oncogene c Fos antibody, Proto oncogene protein c fos antibody, Proto-oncogene c-Fos antibody, fos FBJ murine osteosarcoma viral oncogene homolog antibody

##### Target/Specificity

c-FOS is a member of the FOS transcription factor family which forms dimers with c-JUN to produce the Activator Protein 1 (AP-1) complex which plays a key role in critical cellular processes such as cell proliferation, differentiation and apoptosis (Chiu et al., 1988). c-FOS expression has been demonstrated to be a useful marker of neuronal activation as it is rapidly induced following various stimuli (Hoffman et al., 1993). Additionally, c-FOS has been shown to be overexpressed in a variety of malignant tumor types (Milde-Langosch 2005).

##### Format

Protein G Purified

##### Storage

Maintain refrigerated at 2-8°C for up to 6 months. For long term storage store at -20°C in small aliquots to prevent freeze-thaw cycles.

##### Precautions

Anti-c-FOS Antibody is for research use only and not for use in diagnostic or therapeutic procedures.

##### Shipping

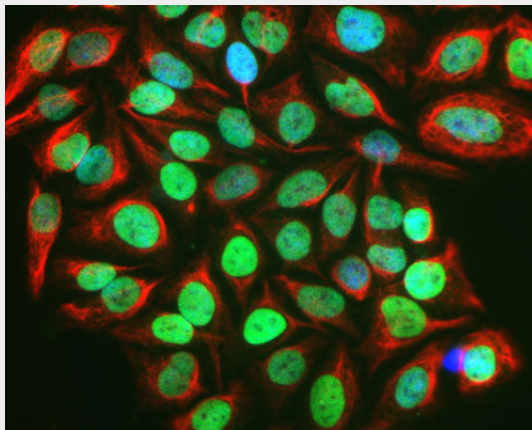
Blue Ice

## Anti-c-FOS Antibody - Protocols

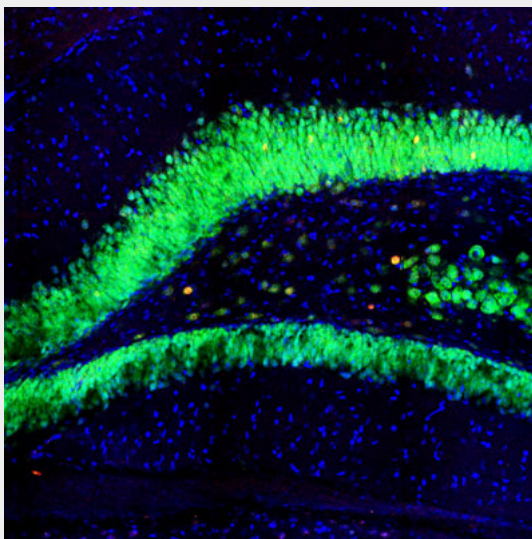
Provided below are standard protocols that you may find useful for product applications.

- [Western Blot](#)
- [Blocking Peptides](#)
- [Dot Blot](#)
- [Immunohistochemistry](#)
- [Immunofluorescence](#)
- [Immunoprecipitation](#)
- [Flow Cytometry](#)
- [Cell Culture](#)

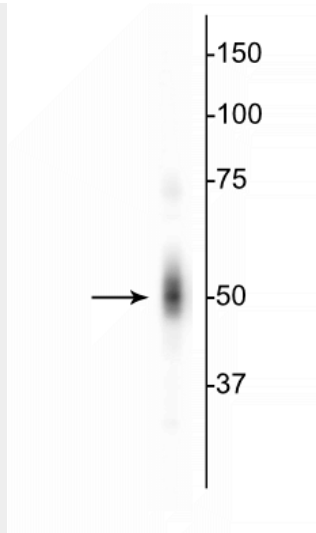
## Anti-c-FOS Antibody - Images



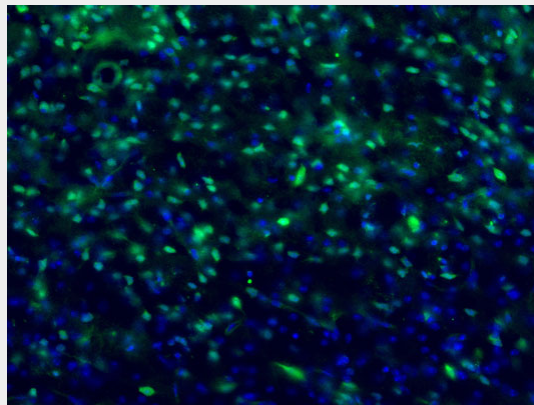
Immunofluorescence of serum starved, FBS stimulated HeLa cells showing nuclear labeling of activated cells with Anti- c-FOS (cat. 309-cFOS, 1:1000, green) while Anti-Vimentin (cat. 2105-VIM, 1:500, red) labels the cytoplasmic intermediate filament, and nuclear staining with DAPI (blue).



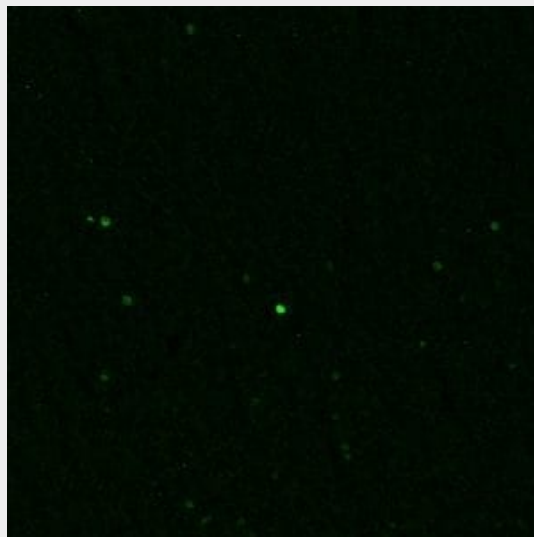
Immunofluorescence of a section of rat hippocampus showing neurons labeled with c-FOS (cat. 309-cFOS, 1:1000, red) counterstained with FOX3(NeuN) (green), and nuclear staining with DAPI. When both c-FOS and FOX3 are expressed the label appears orange.



Western blot of HeLa cell lysate showing specific immunolabeling of the ~50 kDa c-FOS protein.



Immunostaining of mouse brain labeling c-Fos protein in green(cat. 309-cFOS, 1:1000) and DNA with DAPI. Photo courtesy of Adam Almeida, University of Colorado.



Immunolabeling of a section of rat brain that specifically labels c-FOS protein(cat. 309-cFOS, green, 1:1000). Frozen sections were fixed with 4%PFA for 24 hours. Before performing free floating immunohistochemistry, sections underwent antigen retrieval with sodium citrate (pH6.0) for 30 minutes at 80°C. Image kindly provided by Angela Gonzalez, Washington State University,

Vancouver.

### **Anti-c-FOS Antibody - Background**

c-FOS is a member of the FOS transcription factor family which forms dimers with c-JUN to produce the Activator Protein 1 (AP-1) complex which plays a key role in critical cellular processes such as cell proliferation, differentiation and apoptosis (Chiu et al., 1988). c-FOS expression has been demonstrated to be a useful marker of neuronal activation as it is rapidly induced following various stimuli (Hoffman et al., 1993). Additionally, c-FOS has been shown to be overexpressed in a variety of malignant tumor types (Milde-Langosch 2005).