

## Anti-Beclin1 (Ser234) Antibody

Our Anti-Beclin1 (Ser234) rabbit polyclonal phosphospecific primary antibody from PhosphoSolutions i  
Catalog # AN1320

### Specification

---

#### Anti-Beclin1 (Ser234) Antibody - Product Information

Primary Accession	<a href="#">O14457</a>
Reactivity	<b>Bovine</b>
Host	<b>Rabbit</b>
Clonality	<b>Polyclonal</b>
Isotype	<b>IgG</b>
Calculated MW	<b>51896</b>

#### Anti-Beclin1 (Ser234) Antibody - Additional Information

Gene ID **8678**

##### Other Names

PG6 antibody, ATG 6 antibody, ATG6 antibody, ATG6 autophagy related 6 homolog antibody, Bcl-2-interacting protein beclin antibody, Beclin 1 (coiled coil moesin like BCL2 interacting protein) antibody, Beclin 1 autophagy related antibody, Beclin-1 antibody, Beclin1 antibody, BECN 1 antibody, Becn1 antibody, BECN1\_HUMAN antibody, Coiled coil myosin like BCL2 interacting protein antibody, Coiled-coil myosin-like BCL2-interacting protein antibody, GT197 antibody, Protein GT197 antibody, VPS 30 antibody, VPS30 antibody

##### Target/Specificity

Beclin-1 plays a key role in tumor suppression and autophagy. It has been suggested that autophagy proteins such as beclin-1 can inhibit tumorigenesis and that decreased expression of these proteins may contribute to the development of human malignancies (Liang et al., 1999). Beclin-1 has been shown to interact with 14-3-3 proteins through Akt-mediated phosphorylation at Ser-234 (Wang et al., 2012).

##### Format

Antigen Affinity Purified from Pooled Serum

##### Storage

Maintain refrigerated at 2-8°C for up to 6 months. For long term storage store at -20°C in small aliquots to prevent freeze-thaw cycles.

##### Precautions

Anti-Beclin1 (Ser234) Antibody is for research use only and not for use in diagnostic or therapeutic procedures.

##### Shipping

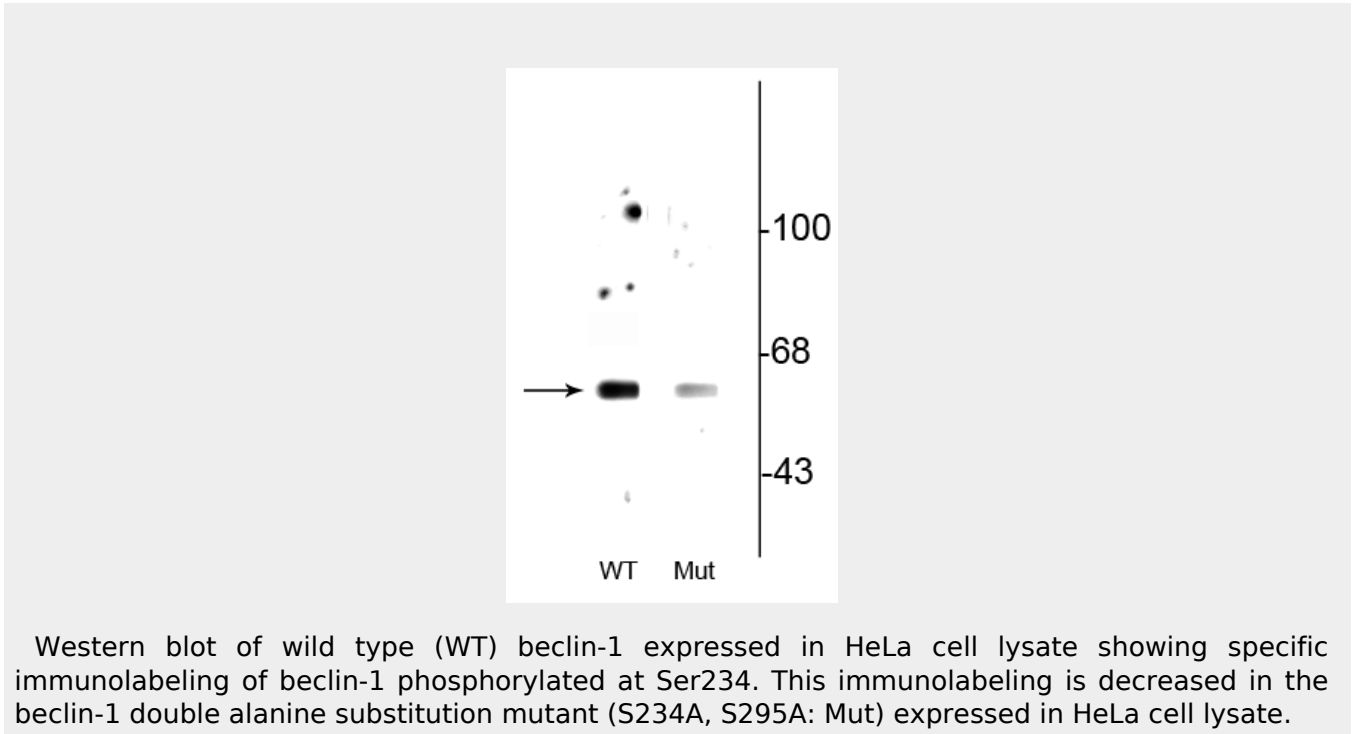
Blue Ice

#### Anti-Beclin1 (Ser234) Antibody - Protocols

Provided below are standard protocols that you may find useful for product applications.

- [Western Blot](#)
- [Blocking Peptides](#)
- [Dot Blot](#)
- [Immunohistochemistry](#)
- [Immunofluorescence](#)
- [Immunoprecipitation](#)
- [Flow Cytometry](#)
- [Cell Culture](#)

#### **Anti-Beclin1 (Ser234) Antibody - Images**



#### **Anti-Beclin1 (Ser234) Antibody - Background**

Beclin-1 plays a key role in tumor suppression and autophagy. It has been suggested that autophagy proteins such as beclin-1 can inhibit tumorigenesis and that decreased expression of these proteins may contribute to the development of human malignancies (Liang et al., 1999). Beclin-1 has been shown to interact with 14-3-3 proteins through Akt-mediated phosphorylation at Ser-234 (Wang et al., 2012).