

## Anti-Alpha Synuclein Antibody

Our Anti-Alpha Synuclein primary antibody from PhosphoSolutions is mouse monoclonal. It detects bovi  
Catalog # AN1308

### Specification

---

#### Anti-Alpha Synuclein Antibody - Product Information

Application	WB, IHC
Primary Accession	<a href="#">P37840</a>
Reactivity	Bovine, Chicken, Drosophila, C.Elegans
Host	Mouse
Clonality	Monoclonal
Isotype	IgG1
Calculated MW	14460

#### Anti-Alpha Synuclein Antibody - Additional Information

Gene ID **6622**

##### Other Names

Alpha synuclein antibody, Alpha-synuclein antibody, Alpha-synuclein, isoform NACP140 antibody, alphaSYN antibody, MGC105443 antibody, MGC110988 antibody, MGC127560 antibody, MGC64356 antibody, NACP antibody, Non A beta component of AD amyloid antibody, Non A4 component of amyloid antibody, Non A4 component of amyloid precursor antibody, Non-A beta component of AD amyloid antibody, Non-A-beta component of alzheimers disease amyloid , precursor of antibody, Non-A4 component of amyloid precursor antibody, Non-A4 component of amyloid, precursor of antibody, OTTHUMP00000218549 antibody, OTTHUMP00000218551 antibody, OTTHUMP00000218552 antibody, OTTHUMP00000218553 antibody, OTTHUMP00000218554 antibody, PARK 1 antibody, PARK 4 antibody, PARK1 antibody, PARK4 antibody, Parkinson disease (autosomal dominant Lewy body) 4 antibody, Parkinson disease familial 1 antibody, SNCA antibody, Snca synuclein alpha (non A4 component of amyloid precursor) antibody, SYN antibody, Synuclein alpha antibody, Synuclein alpha 140 antibody, Synuclein alpha (non A4 component of amyloid precursor) antibody, SYUA\_HUMAN antibody

##### Target/Specificity

Alpha-synuclein is a presynaptic neuronal protein that is thought to be involved in the formation of SNARE complexes. Most significantly, aggregated alpha-synuclein is one of the major components found in the Lewy bodies that occur in Parkinson's disease (PD) and other neurodegenerative disorders (Okochi et al., 2000). Early onset Parkinson's disease may be caused by a duplication or triplication of one of the alpha synuclein genes (ChartierHarlin MC et al., 2004 and Singleton, AB et al., 2005). Alpha-synuclein is also found in the Lewy bodies of patients with diffuse Lewy body disease and inclusions in glial cells in the brains of patients with multiple system atrophy (MSA) and amyotrophic lateral sclerosis (ALS).

##### Format

Protein G Purified

##### Storage

Maintain refrigerated at 2-8°C for up to 6 months. For long term storage store at -20°C in small aliquots to prevent freeze-thaw cycles.

### Precautions

Anti-Alpha Synuclein Antibody is for research use only and not for use in diagnostic or therapeutic procedures.

### Shipping

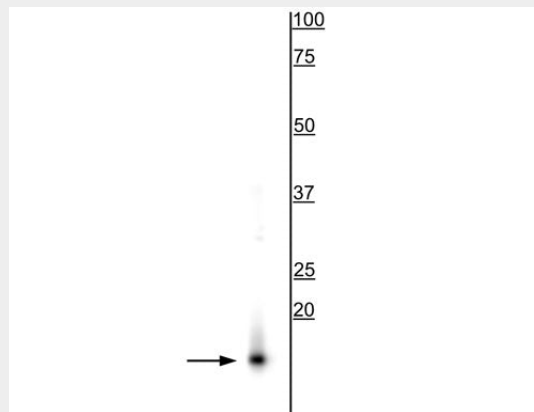
Blue Ice

### Anti-Alpha Synuclein Antibody - Protocols

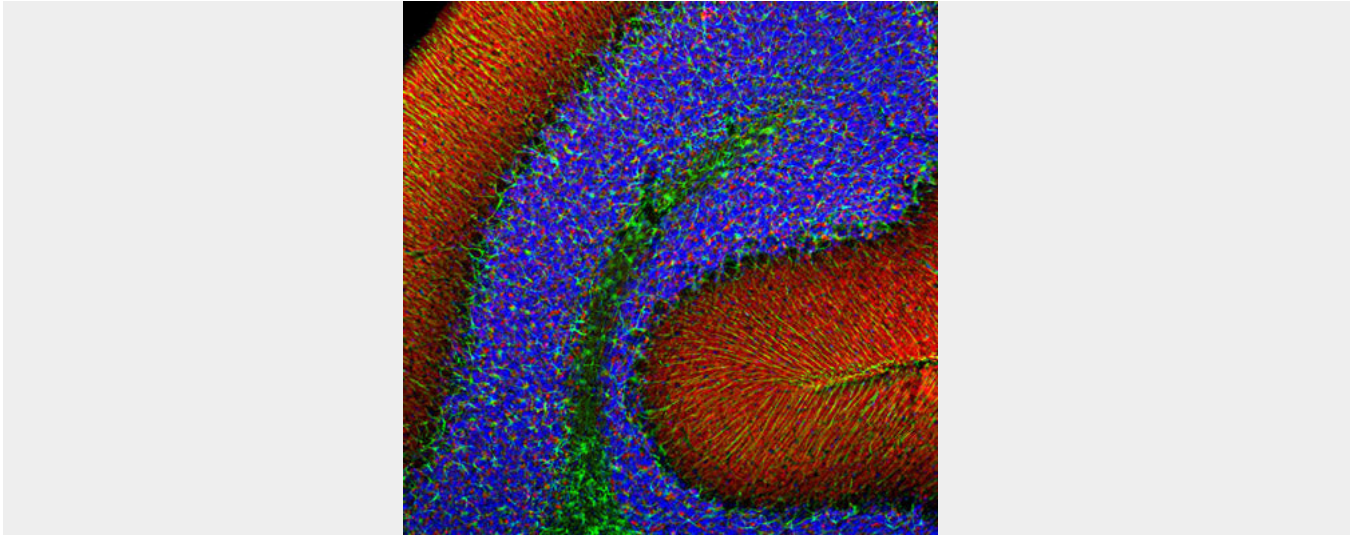
Provided below are standard protocols that you may find useful for product applications.

- [Western Blot](#)
- [Blocking Peptides](#)
- [Dot Blot](#)
- [Immunohistochemistry](#)
- [Immunofluorescence](#)
- [Immunoprecipitation](#)
- [Flow Cytometry](#)
- [Cell Culture](#)

### Anti-Alpha Synuclein Antibody - Images



Western blot of rat brain lysate showing specific immunolabeling of the ~15 kDa alpha synuclein protein.



Immunofluorescence of rat cerebellum showing specific alpha-synuclein staining in synaptic regions in red and GFAP (cat. 620-GFAP) in the cytoskeleton of glia and astrocytes in green. DNA is stained blue.

#### **Anti-Alpha Synuclein Antibody - Background**

Alpha-synuclein is a presynaptic neuronal protein that is thought to be involved in the formation of SNARE complexes. Most significantly, aggregated alpha-synuclein is one of the major components found in the Lewy bodies that occur in Parkinson's disease (PD) and other neurodegenerative disorders (Okochi et al., 2000). Early onset Parkinson's disease may be caused by a duplication or triplication of one of the alpha synuclein genes (ChartierHarlin MC et al., 2004 and Singleton, AB et al., 2005). Alpha-synuclein is also found in the Lewy bodies of patients with diffuse Lewy body disease and inclusions in glial cells in the brains of patients with multiple system atrophy (MSA) and amyotrophic lateral sclerosis (ALS).