

## Anti-AIF1/Iba1 Antibody

Our Anti-AIF1/Iba1 rabbit polyclonal primary antibody from PhosphoSolutions is produced in-house. It  
Catalog # AN1299

### Specification

---

#### Anti-AIF1/Iba1 Antibody - Product Information

Application	WB
Primary Accession	<a href="#">P55008</a>
Host	Rabbit
Clonality	Polyclonal
Isotype	IgG
Calculated MW	16703

#### Anti-AIF1/Iba1 Antibody - Additional Information

Gene ID **199**

##### Target/Specificity

AIF1, allograft inflammatory factor-1, (also known as Iba1, Ionized calcium binding adaptor molecule 1) is a 17 kDa protein that is a pro-inflammatory molecule that mediates calcium signals (Ito, D. et al 1998). During inflammation, increased expression of AIF1 occurs in microglia, macrophages, T-cells, synoviocytes, and adipocytes (Watano, K., et al, 2001). Expression of AIF-1 has been observed in healthy brains and varies throughout the day, gaining the highest expression in the prefrontal and parietal cortices when sleeping (Romcy-Pereira, R.N, et al, 2009). Increased expression of AIF1 has been observed in several diseases including breast cancer (Liu, S., et al 2008), atherosclerosis (Utans, U., et al, 1995), and rheumatoid arthritis (Kimura, M., et al, 2007).

##### Format

Antigen Affinity Purified from Pooled Serum

##### Storage

Maintain refrigerated at 2-8°C for up to 6 months. For long term storage store at -20°C in small aliquots to prevent freeze-thaw cycles.

##### Precautions

Anti-AIF1/Iba1 Antibody is for research use only and not for use in diagnostic or therapeutic procedures.

##### Shipping

Blue Ice

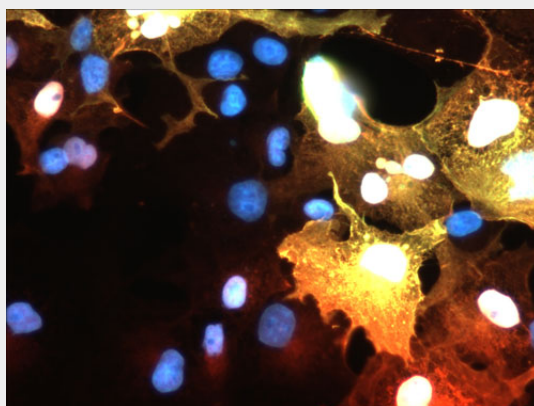
#### Anti-AIF1/Iba1 Antibody - Protocols

Provided below are standard protocols that you may find useful for product applications.

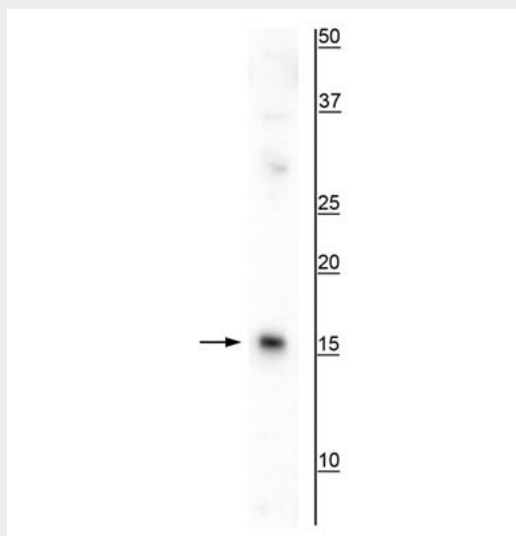
- [Western Blot](#)
- [Blocking Peptides](#)

- [Dot Blot](#)
- [Immunohistochemistry](#)
- [Immunofluorescence](#)
- [Immunoprecipitation](#)
- [Flow Cytometry](#)
- [Cell Culture](#)

### Anti-AIF1/Iba1 Antibody - Images



Immunofluorescence of FLAG-tagged AIF1 transfected COS cells showing AIF1 staining in red (cat. 91-AIF1, 1:50) and FLAG staining in green causing positive transfected cells to appear yellow. DNA is stained blue with DAPI.



Western blot of mouse spleen lysate showing specific immunolabeling of the ~17 kDa AIF1/Iba1 protein.

### Anti-AIF1/Iba1 Antibody - Background

AIF1, allograft inflammatory factor-1, (also known as Iba1, Ionized calcium binding adaptor molecule 1) is a 17 kDa protein that is a pro-inflammatory molecule that mediates calcium signals (Ito, D. et al 1998). During inflammation, increased expression of AIF1 occurs in microglia, macrophages, T-cells, synoviocytes, and adipocytes (Watano, K., et al, 2001). Expression of AIF-1 has been observed in healthy brains and varies throughout the day, gaining the highest expression in the prefrontal and parietal cortices when sleeping (Romcy-Pereira, R.N, et al, 2009). Increased expression of AIF1 has been observed in several diseases including breast cancer (Liu, S., et al 2008), atherosclerosis (Utans, U., et al, 1995), and rheumatoid arthritis (Kimura, M., et al, 2007).