

**EWS Antibody**  
**Mouse Monoclonal Antibody**  
**Catalog # AN1268**

**Specification**

---

**EWS Antibody - Product Information**

Application	<b>WB</b>
Primary Accession	<a href="#">O01844</a>
Reactivity	<b>Human</b>
Host	<b>Mouse</b>
Clonality	<b>Monoclonal</b>
Isotype	<b>IgG2b</b>
Calculated MW	<b>68478</b>

**EWS Antibody - Additional Information**

Gene ID	<b>2130</b>
Gene Name	<b>EWSR1</b>

**Target/Specificity**

full length recombinant human EWS expressed in and purified from E. coli.

**Dilution**

WB~~ 1:1000

**Format**

Protein G purified culture supernatant

**Storage**

Maintain refrigerated at 2-8°C for up to 6 months. For long term storage store at -20°C in small aliquots to prevent freeze-thaw cycles.

**Precautions**

EWS Antibody is for research use only and not for use in diagnostic or therapeutic procedures.

**Shipping**

Blue Ice

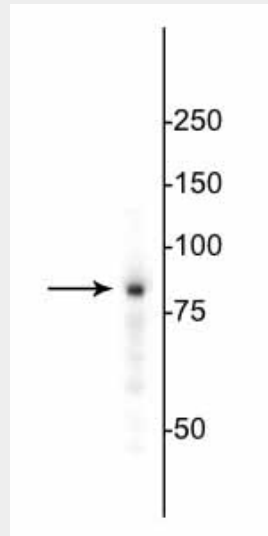
**EWS Antibody - Protocols**

Provided below are standard protocols that you may find useful for product applications.

- [Western Blot](#)
- [Blocking Peptides](#)
- [Dot Blot](#)
- [Immunohistochemistry](#)
- [Immunofluorescence](#)
- [Immunoprecipitation](#)
- [Flow Cytometry](#)

- [Cell Culture](#)

## **EWS Antibody - Images**



Western blot of HeLa cell lysate showing specific immunolabeling of the ~85 kDa EWS protein.

## **EWS Antibody - Background**

The Ewing Sarcoma Breakpoint Region 1 (EWSR1) gene encodes the EWS protein, which along with FUS and TAF15 comprises the FET family of RNA-binding proteins. EWS is primarily expressed in the nucleus, but has also been found in the cytoplasm of secretory cell types (Andersson et al., 2008). Defects of EWSR1 are known to cause Ewing sarcoma and have been implicated in amyotrophic lateral sclerosis (ALS) (Svetoni et al., 2016). Recently, EWS has been shown to directly interact with oncogenic ETS transcription factors in the promotion of prostate cancer (Kedage et al., 2016).