

Phospho-Thr23/25 REDD1 Antibody
Affinity purified rabbit polyclonal antibody
Catalog # AN1256

Specification

Phospho-Thr23/25 REDD1 Antibody - Product Information

Application	WB
Primary Accession	O9NX09
Reactivity	Human
Host	Rabbit
Clonality	polyclonal
Calculated MW	34 KDa

Phospho-Thr23/25 REDD1 Antibody - Additional Information

Gene ID	54541
Gene Name	DDIT4

Other Names

DNA damage-inducible transcript 4 protein, HIF-1 responsive protein RTP801, Protein regulated in development and DNA damage response 1, REDD-1, DDIT4, REDD1, RTP801

Target/Specificity

Synthetic phospho-peptide corresponding to amino acid residues surrounding Thr23/25 conjugated to KLH.

Dilution

WB~~ 1:500

Format

Prepared from rabbit serum by affinity purification via sequential chromatography on phospho- and dephospho-peptide affinity columns.

Antibody Specificity

Specific for the ~34k REDD1 phosphorylated at Thr23/25. Immunolabeling is blocked by the phosphopeptide used as antigen but not by the corresponding dephosphopeptide.

Storage

Maintain refrigerated at 2-8°C for up to 6 months. For long term storage store at -20°C in small aliquots to prevent freeze-thaw cycles.

Precautions

Phospho-Thr23/25 REDD1 Antibody is for research use only and not for use in diagnostic or therapeutic procedures.

Shipping

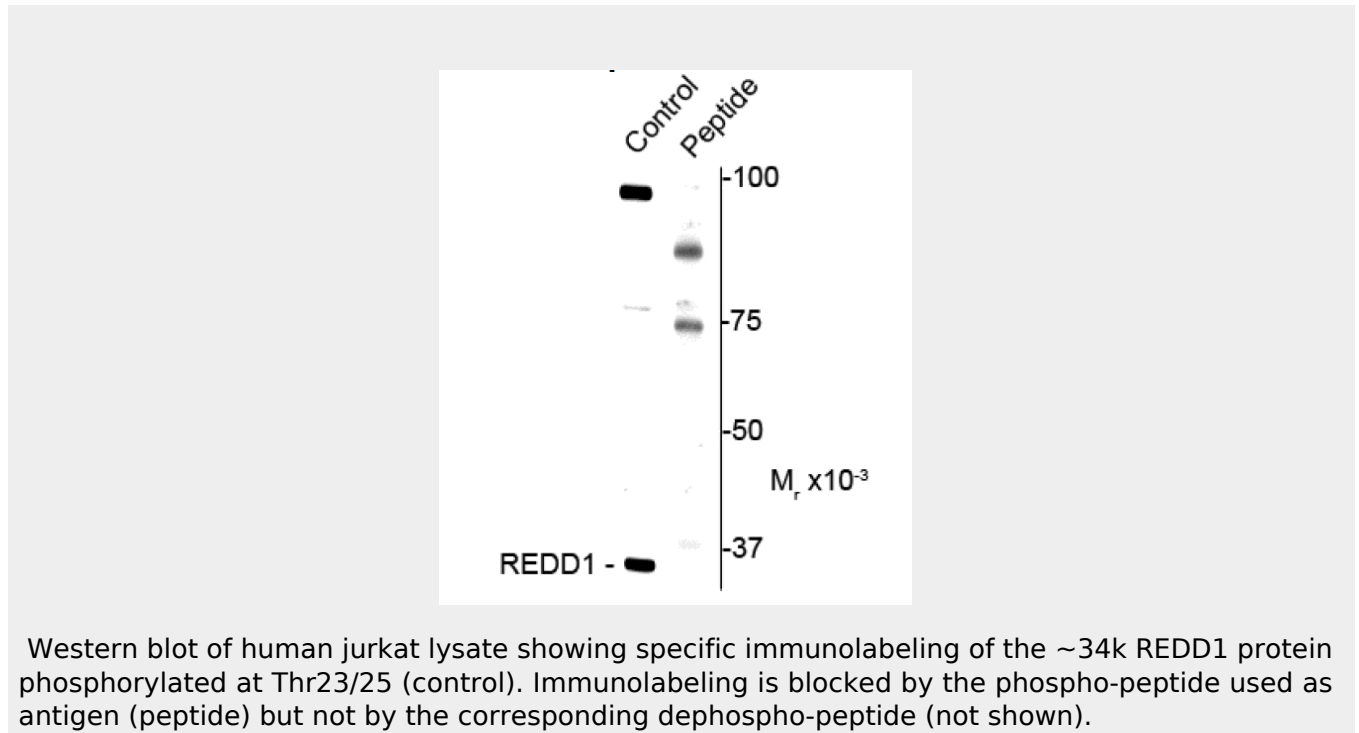
Blue Ice

Phospho-Thr23/25 REDD1 Antibody - Protocols

Provided below are standard protocols that you may find useful for product applications.

- [Western Blot](#)
- [Blocking Peptides](#)
- [Dot Blot](#)
- [Immunohistochemistry](#)
- [Immunofluorescence](#)
- [Immunoprecipitation](#)
- [Flow Cytometry](#)
- [Cell Culture](#)

Phospho-Thr23/25 REDD1 Antibody - Images



Phospho-Thr23/25 REDD1 Antibody - Background

REDD1, Regulated in Development and DNA damage responses 1, is induced by hypoxia, cell stress, and apoptosis. Reduced REDD1 levels can sensitize cells towards apoptosis, where elevated levels of REDD1 induced by hypoxia can desensitize cells to apoptotic stimuli (Schwarzer et al, 2005). REDD1 has a crucial role in inhibiting mammalian rapamycin complex 1 (mTORC1) signaling during hypoxic stress (Katiyar et al, 2009). It has been shown that the rapid degradation of REDD1 is mediated by the CUL4A-DDB1-ROC1-b-TRCP E3 ligase complex and is regulated by REDD1 phosphorylation at Thr 25, Thr 23 and Ser 19 through the activity of GSK3b (Katiyar et al, 2009).

Phospho-Thr23/25 REDD1 Antibody - References

Schwarzer r, Tondera D, Arnold W, Giese K, Klippel A, Kaufmann J (2005) REDD1 integrates hypoxia-mediated survival signaling downstream of phosphatidylinositol 3-kinase. *Oncogene*

24(7): 1138-49.

Katiyar S, Liu E, Knutzen CA, Lang ES, Lombardo CR, Sankar S, Toth JI, Petroski MD, Ronai Z, Chiang GC (2009) REDD1, an inhibitor of mTOR signaling, is regulated by the CUL4A-DDB1 ubiquitin ligase. *EMBO Rep* 10(8):866-72.