

Visinin-Like Protein 1 (VSNL1) Antibody
Mouse monoclonal antibody
Catalog # AN1246

Specification

Visinin-Like Protein 1 (VSNL1) Antibody - Product Information

Application	WB, IF
Primary Accession	P62760
Reactivity	Bovine, Human, Mouse, Rat
Host	Mouse
Clonality	monoclonal
Isotype	IgG1
Calculated MW	22 KDa

Visinin-Like Protein 1 (VSNL1) Antibody - Additional Information

Gene ID	7447
Gene Name	VSNL1
Other Names	
Visinin-like protein 1, VILIP, VLP-1, Hippocalcin-like protein 3, HLP3, VSNL1, VISL1	

Target/Specificity

Recombinant human VSNL1 purified from E. coli.

Dilution

WB~~ 1:2000
IF~~ 1:500

Format

Affinity purified from tissue culture supernatant.

Antibody Specificity

Specific for the ~22k protein

Storage

Maintain refrigerated at 2-8°C for up to 6 months. For long term storage store at -20°C in small aliquots to prevent freeze-thaw cycles.

Precautions

Visinin-Like Protein 1 (VSNL1) Antibody is for research use only and not for use in diagnostic or therapeutic procedures.

Shipping

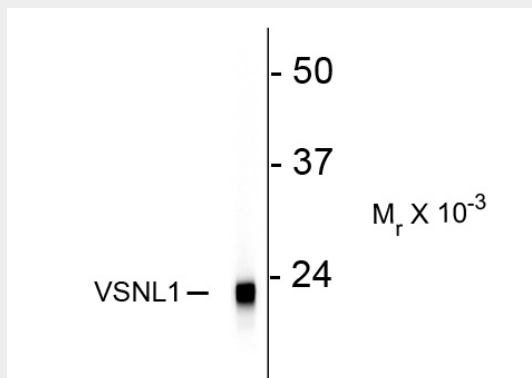
Blue Ice

Visinin-Like Protein 1 (VSNL1) Antibody - Protocols

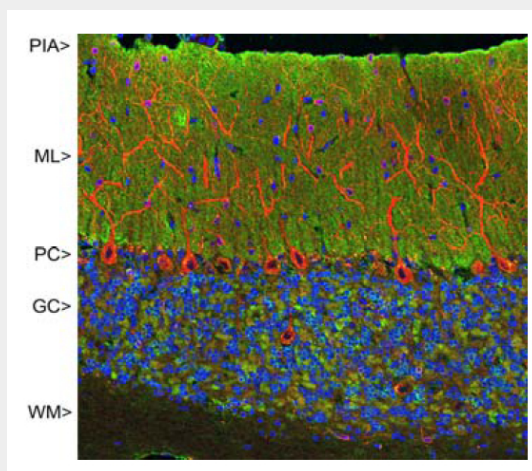
Provided below are standard protocols that you may find useful for product applications.

- [Western Blot](#)
- [Blocking Peptides](#)
- [Dot Blot](#)
- [Immunohistochemistry](#)
- [Immunofluorescence](#)
- [Immunoprecipitation](#)
- [Flow Cytometry](#)
- [Cell Culture](#)

Visinin-Like Protein 1 (VSNL1) Antibody - Images



Western blot of rat cerebellum lysate showing specific immunolabeling of the ~ 22k VSNL1 protein.



Immunofluorescence of rat cerebellum showing strong synaptic staining of VSNL1 (green) in the molecular layer (ML) and MAP2 in red.

Visinin-Like Protein 1 (VSNL1) Antibody - Background

Visinin-like protein 1 (VSNL1), also known as VILIP1, is a calcium sensor protein expressed exclusively in neurons. Highest levels of VSNL1 expression are found in cerebellar Purkinje cells. VSNL1 has been implicated in the modulation of cell signaling cascades via regulation of adenylyl cyclase activity (Braunewell et al., 1997). Additionally, VSNL1 has been associated with amyloid plaques and neurofibrillar tangles in Alzheimer's disease (Schnurra et al., 2001).

Visinin-Like Protein 1 (VSNL1) Antibody - References

Braunewell KH, Spilker C, Behnisch T, Gundelfinger ED (1997) The neuronal calcium-sensor protein

VILIP

modulates cyclic AMP accumulation in stably transfected C6 glioma cells: amino-terminal myristoylation determines functional activity.

J. Neurochem.

68 (5): 2129-39.

Schnurra I, Bernstein HG, Riederer P, Braunevel KH (2002) The neuronal calcium sensor protein VILIP-1 is

associated with amyloid plaques and extracellular tangles in Alzheimer's disease and promotes cell death and tau phosphorylation in vitro: a link between calcium sensors and Alzheimer's disease?

Neurobiol. Dis.

8 (5): 900-9.