

**Lysosomal Associated Membrane Protein 1 (LAMP1) Antibody**  
Mouse monoclonal antibody  
Catalog # AN1239

### Specification

---

#### Lysosomal Associated Membrane Protein 1 (LAMP1) Antibody - Product Information

Application	WB, IF
Primary Accession	<a href="#">P11279</a>
Reactivity	Bovine, Human, Mouse, Rat
Host	Mouse
Clonality	monoclonal
Isotype	IgG1

#### Lysosomal Associated Membrane Protein 1 (LAMP1) Antibody - Additional Information

Gene ID	3916
Gene Name	LAMP1

#### Other Names

Lysosome-associated membrane glycoprotein 1, LAMP-1, Lysosome-associated membrane protein 1, CD107 antigen-like family member A, CD107a, LAMP1

#### Target/Specificity

Recombinant full length human LAMP1 expressed in and purified from E. coli.

#### Dilution

WB~~ 1:5000

IF~~ 1:2000

#### Format

Affinity purified from tissue culture supernatant.

#### Antibody Specificity

Specific for the ~100k LAMP1 protein.

#### Storage

Maintain refrigerated at 2-8°C for up to 6 months. For long term storage store at -20°C in small aliquots to prevent freeze-thaw cycles.

#### Precautions

Lysosomal Associated Membrane Protein 1 (LAMP1) Antibody is for research use only and not for use in diagnostic or therapeutic procedures.

#### Shipping

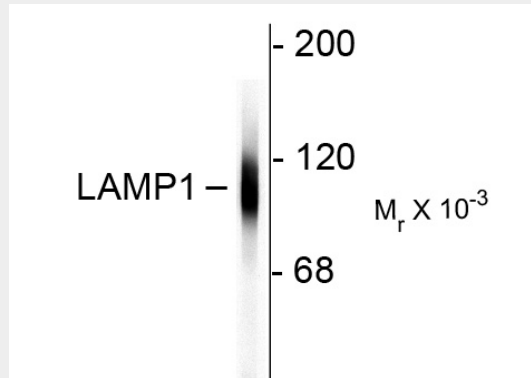
Blue Ice

#### Lysosomal Associated Membrane Protein 1 (LAMP1) Antibody - Protocols

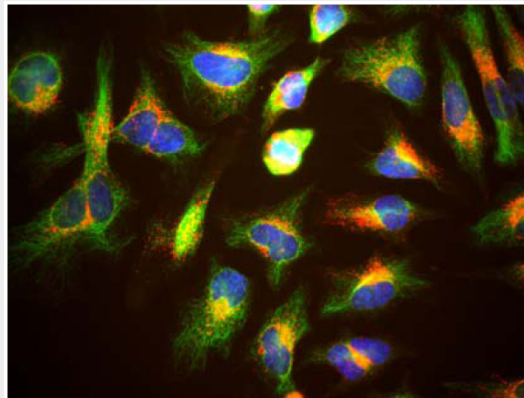
Provided below are standard protocols that you may find useful for product applications.

- [Western Blot](#)
- [Blocking Peptides](#)
- [Dot Blot](#)
- [Immunohistochemistry](#)
- [Immunofluorescence](#)
- [Immunoprecipitation](#)
- [Flow Cytometry](#)
- [Cell Culture](#)

### Lysosomal Associated Membrane Protein 1 (LAMP1) Antibody - Images



Western blot of HeLa lysate showing specific immunolabeling of the ~ 100k LAMP1 protein.



Immunofluorescence of HeLa cells showing strong punctate cytoplasmic labeling of LAMP1 corresponding to lysosomes and late endosomes in red.

### Lysosomal Associated Membrane Protein 1 (LAMP1) Antibody - Background

Lysosomal Associated Membrane Protein1 (LAMP1) is a protein that is localized primarily in lysosomes but may also be present on late endosomes and the plasma membrane. LAMP1 antibodies are therefore widely used as lysosome markers. It has recently been suggested that lysosomes are activated in microglia in the progression of multiple system atrophy (MSA) and thus play a key role in its pathology (Makioka et al., 2012).

### Lysosomal Associated Membrane Protein 1 (LAMP1) Antibody - References

Makioka K, Yamazaki T, Takatama M, Nakazato Y, Okamoto K. (2012) Activation and alteration of lysosomes in multiple system atrophy. *Neuroreport*. Mar 28;23(5):270-6.