

**Phospho-Ser234 Beclin-1 Antibody**  
Affinity purified rabbit polyclonal antibody  
Catalog # AN1225

**Specification**

---

**Phospho-Ser234 Beclin-1 Antibody - Product Information**

Application	WB
Primary Accession	<a href="#">Q14457</a>
Reactivity	Human
Predicted	Bovine, Mouse, Monkey, Rat
Host	Rabbit
Clonality	polyclonal
Calculated MW	60 KDa

**Phospho-Ser234 Beclin-1 Antibody - Additional Information**

Gene ID	8678
Gene Name	BECN1
<b>Other Names</b>	Beclin-1, Coiled-coil myosin-like BCL2-interacting protein, Protein GT197, BECN1, GT197

**Target/Specificity**

Synthetic phospho-peptide corresponding to amino acid residues surrounding Ser234 conjugated to KLH.

**Dilution**

WB~~ 1:250

**Format**

Prepared from rabbit serum by affinity purification via sequential chromatography on phospho- and dephosphopeptide affinity columns.

**Antibody Specificity**

Specific for the ~60k beclin1 protein phosphorylated at Ser234. Immunolabeling of the beclin-1 band is decreased in the beclin-1 alanine substitution mutant. Additional bands may be observed in non-immunoprecipitated lysates.

**Storage**

Maintain refrigerated at 2-8°C for up to 6 months. For long term storage store at -20°C in small aliquots to prevent freeze-thaw cycles.

**Precautions**

Phospho-Ser234 Beclin-1 Antibody is for research use only and not for use in diagnostic or therapeutic procedures.

**Shipping**

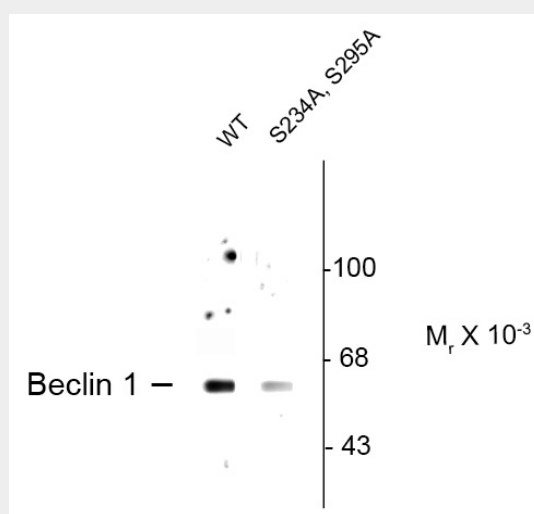
Blue Ice

## Phospho-Ser234 Beclin-1 Antibody - Protocols

Provided below are standard protocols that you may find useful for product applications.

- [Western Blot](#)
- [Blocking Peptides](#)
- [Dot Blot](#)
- [Immunohistochemistry](#)
- [Immunofluorescence](#)
- [Immunoprecipitation](#)
- [Flow Cytometry](#)
- [Cell Culture](#)

## Phospho-Ser234 Beclin-1 Antibody - Images



Western blot of flag-beclin-1 WT immunoprecipitates expressed in 293T cells showing specific immunolabeling of beclin-1 when phosphorylated at S234 (WT). This immunolabeling is decreased in the beclin-1 double alanine substitution mutant (S234A, S295A).

## Phospho-Ser234 Beclin-1 Antibody - Background

Beclin-1 plays a key role in tumor suppression and autophagy. It has been suggested that autophagy proteins such as beclin-1 can inhibit tumorigenesis and that decreased expression of these proteins may contribute to the development of human malignancies (Liang et al., 1999). Beclin-1 has been shown to interact with 14-3-3 proteins through Akt-mediated phosphorylation at Ser234 (Wang et al., 2012).

## Phospho-Ser234 Beclin-1 Antibody - References

Liang, XH, Jackson S, Seaman M, Brown K, Kempkes B, Hibshoosh H, Levine B. (1999) Induction of autophagy and inhibition of tumorigenesis by beclin-1. *Nature* 402(6762):672-676.  
Richard C. Wang, Yongjie Wei, Zhenyi An, Zhongju Zou, Guanghua Xiao, Govind Bhagat, Michael White, Julia Reichelt, and Beth Levine (2012) Akt-Mediated Regulation of Autophagy and Tumorigenesis Through Beclin 1 Phosphorylation. *Science* 338:956-959.