

Syntaxin 1A Antibody
Mouse monoclonal antibody
Catalog # AN1196

Specification

Syntaxin 1A Antibody - Product Information

Application	WB
Primary Accession	O16623
Reactivity	Human, Hamster, Pig, Rat
Host	Mouse
Clonality	monoclonal
Isotype	IgG1
Calculated MW	36 KDa

Syntaxin 1A Antibody - Additional Information

Gene ID	6804
Gene Name	STX1A
Other Names	
Syntaxin-1A, Neuron-specific antigen HPC-1, STX1A, STX1	

Target/Specificity

Synaptic immunoprecipitate (crude) from human brain.

Dilution

WB~~ 1:1000

Format

Protein G purified culture supernatant.

Antibody Specificity

The antibody is specific for the ~ 36 kDa syntaxin protein in Westernblots of rat brain lysate. The antibody has also been used for immunohistochemistry on formalinfixed, vibratome sections. Does not work on paraffin sections.

Storage

Maintain refrigerated at 2-8°C for up to 6 months. For long term storage store at -20°C in small aliquots to prevent freeze-thaw cycles.

Precautions

Syntaxin 1A Antibody is for research use only and not for use in diagnostic or therapeutic procedures.

Shipping

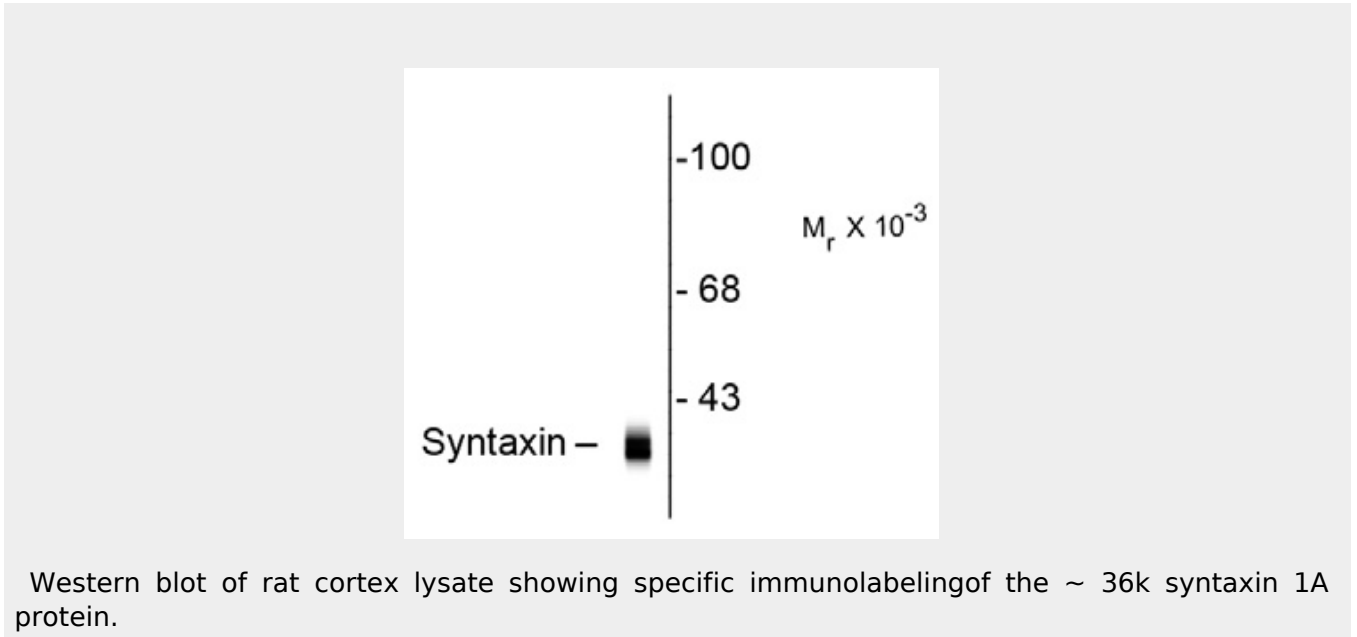
Blue Ice

Syntaxin 1A Antibody - Protocols

Provided below are standard protocols that you may find useful for product applications.

- [Western Blot](#)
- [Blocking Peptides](#)
- [Dot Blot](#)
- [Immunohistochemistry](#)
- [Immunofluorescence](#)
- [Immunoprecipitation](#)
- [Flow Cytometry](#)
- [Cell Culture](#)

Syntaxin 1A Antibody - Images



Western blot of rat cortex lysate showing specific immunolabeling of the ~ 36k syntaxin 1A protein.

Syntaxin 1A Antibody - Background

Syntaxins are a family of proteins involved in the docking of synaptic vesicles with the plasma membrane. Syntaxin, along with synaptobrevin and SNAP-25, forms the SNARE complex which mediates synaptic vesicle fusion and exocytosis. Binding of Munc18-1 to the N-terminus of syntaxin 1 has been demonstrated to be essential for exocytic membrane fusion (Khvotchev et al., 2007). Decreased levels of phosphorylated syntaxin 1 in the prefrontal cortex have recently been correlated with schizophrenia (Castillo et al., 2010).

Syntaxin 1A Antibody - References

Khvotchev M
,
Dulubova I
,
Sun J
,
Dai H
,
Rizo J
,
Südhof TC

(2007) Dual modes of Munc18-1/SNARE interactions are coupled by functionally critical binding to syntaxin-1 N terminus.

J
Neurosci.
2007 Nov 7;27(45):12147-55
Castillo MA

,

Ghose S

,

Tamminga CA

,

Ulery-Reynolds PG
(2010) Deficits in syntaxin 1 phosphorylation in schizophrenia prefrontal cortex.
Biol Psychiatry.
67(3):208-16

Honer, W. G., Hu, L. & Davies, P. Human synaptic proteins with a heterogeneous distribution in cerebellum and visual cortex.
Brain Research
609, 9-20 (1993).