

**PEBP (Phosphatidylethanolamine Binding Protein) Antibody**  
Rabbit polyclonal antibody  
Catalog # AN1153**Specification**

---

**PEBP (Phosphatidylethanolamine Binding Protein) Antibody - Product Information**

Application	WB, FC
Primary Accession	<a href="#">P31044</a>
Reactivity	Human, Mouse, Rat
Host	Rabbit
Clonality	polyclonal
Calculated MW	22 KDa

**PEBP (Phosphatidylethanolamine Binding Protein) Antibody - Additional Information**

Gene ID	29542
Gene Name	PEBP1

**Other Names**

Phosphatidylethanolamine-binding protein 1, PEBP-1, 23 kDa morphine-binding protein, HCNPpp, P23K, Hippocampal cholinergic neurostimulating peptide, HCNP, Pebp1, Pbp, Pebp

**Target/Specificity**

Purified native rat PEBP.

**Dilution**

WB~~1:1000

FC~~1:500

**Format**

Neat serum

**Antibody Specificity**

Specific for the ~ 22k PEBP protein in Western blots

**Storage**

Maintain refrigerated at 2-8°C for up to 6 months. For long term storage store at -20°C in small aliquots to prevent freeze-thaw cycles.

**Precautions**

PEBP (Phosphatidylethanolamine Binding Protein) Antibody is for research use only and not for use in diagnostic or therapeutic procedures.

**Shipping**

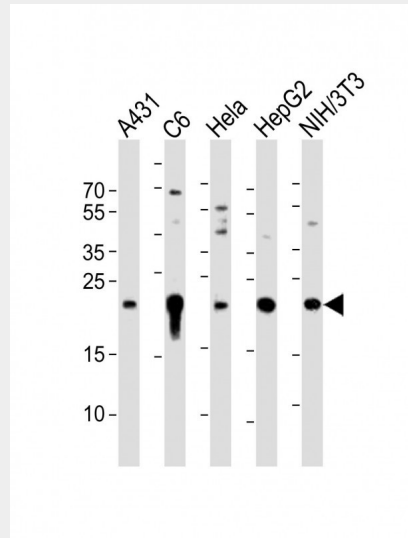
Blue Ice

**PEBP (Phosphatidylethanolamine Binding Protein) Antibody - Protocols**

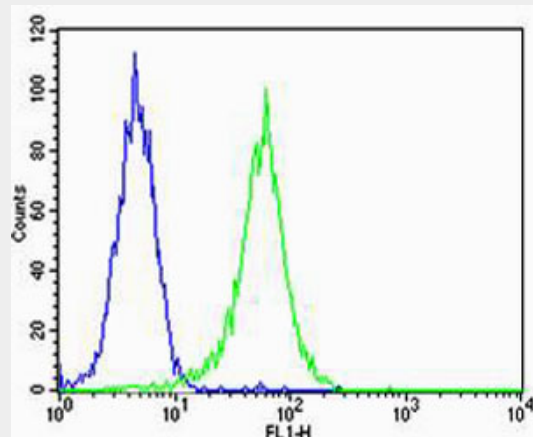
Provided below are standard protocols that you may find useful for product applications.

- [Western Blot](#)
- [Blocking Peptides](#)
- [Dot Blot](#)
- [Immunohistochemistry](#)
- [Immunofluorescence](#)
- [Immunoprecipitation](#)
- [Flow Cytometry](#)
- [Cell Culture](#)

### PEBP (Phosphatidylethanolamine Binding Protein) Antibody - Images



All lanes : Anti-Pebp1 Antibody at 1:1000 dilution Lane 1: A431 whole cell lysate Lane 2: C6 whole cell lysate Lane 3: HeLa whole cell lysate Lane 4: HepG2 whole cell lysate Lane 5: NIH/3T3 whole cell lysate Lysates/proteins at 20 µg per lane. Secondary Goat Anti-Rabbit IgG, (H+L), Peroxidase conjugated at 1/10000 dilution. Predicted band size : 21 kDa Blocking/Dilution buffer: 5% NFDM/TBST.



Flow cytometric analysis of HeLa cells using Park7 (DJ-1) Antibody(green, Cat#AN1153) compared to an isotype control of rabbit IgG(blue). AN1153 was diluted at 1:500 dilution. An Alexa Fluor® 488 goat anti-rabbit IgG at 1:400 dilution was used as the secondary antibody.

### PEBP (Phosphatidylethanolamine Binding Protein) Antibody - Background

Phosphatidylethanolamine binding protein (PEBP), also known as Raf kinase inhibitory protein (RKIP) is a highly conserved multifunctional protein that modulates the

Raf/MAPK signaling cascade and has been implicated as a suppressor of metastatic cancer (Trakul N et al., 2005). PEBP has been shown to not only inhibit cell proliferation but also to induce differentiation of human keratinocytes (Yamazaki et al., 2004). Dysregulation of calpain activity results in cellular degeneration in conditions such as Alzheimer's disease and recently PEBP has been identified as a potential in vivo calpain substrate (Chen et al., 2006).

### **PEBP (Phosphatidylethanolamine Binding Protein) Antibody - References**

Trakul N, Menard RE, Schade GR, Qian Z, Rosner MR (2005) Raf kinase inhibitory protein regulates Raf-1 but not BRAF

kinase activation. *J. Biol. Chem.* 280(26): 24931-40.

Yamazaki T, Nakano H, Hayakari M, Tanaka M, Mayama J, Tsuchida S (2004) Differentiation induction of human

keratinocytes by phosphatidylethanolamine binding protein. *J. Biol. Chem.* 279(31):32191-95.

Chen Q, Wang S, Thompson SN, Hall ED, Guttmann RP (2006) Identification and characterization of PEBP as a

calpain substrate. *J Neurochem.* 99(4): 1133-41.