

PAX8 Antibody (Center)
Purified Mouse Monoclonal Antibody (Mab)
Catalog # AM8714b

Specification

PAX8 Antibody (Center) - Product Information

Application	WB,E
Primary Accession	Q06710
Reactivity	Human
Predicted	Human
Host	Mouse
Clonality	monoclonal
Isotype	IgG1, κ
Calculated MW	48218

PAX8 Antibody (Center) - Additional Information

Gene ID 7849

Other Names

Paired box protein Pax-8, PAX8

Target/Specificity

This PAX8 antibody is generated from a mouse immunized with a recombinant protein from human PAX8.

Dilution

WB~~1:4000

Format

Purified monoclonal antibody supplied in PBS with 0.09% (W/V) sodium azide. This antibody is purified through a protein G column, followed by dialysis against PBS.

Storage

Maintain refrigerated at 2-8°C for up to 2 weeks. For long term storage store at -20°C in small aliquots to prevent freeze-thaw cycles.

Precautions

PAX8 Antibody (Center) is for research use only and not for use in diagnostic or therapeutic procedures.

PAX8 Antibody (Center) - Protein Information

Name PAX8

Function Transcription factor for the thyroid-specific expression of the genes exclusively expressed in the thyroid cell type, maintaining the functional differentiation of such cells.

Cellular Location

Nucleus.

Tissue Location

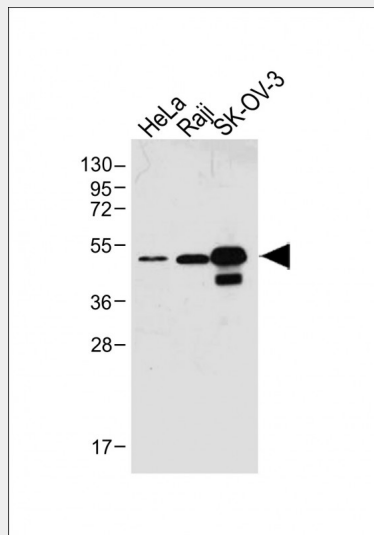
Expressed in the excretory system, thyroid gland and Wilms tumors

PAX8 Antibody (Center) - Protocols

Provided below are standard protocols that you may find useful for product applications.

- [Western Blot](#)
- [Blocking Peptides](#)
- [Dot Blot](#)
- [Immunohistochemistry](#)
- [Immunofluorescence](#)
- [Immunoprecipitation](#)
- [Flow Cytometry](#)
- [Cell Culture](#)

PAX8 Antibody (Center) - Images



All lanes : Anti-PAX8 Antibody (Center) at 1:4000 dilution Lane 1: HeLa whole cell lysate Lane 2: Raji whole cell lysate Lane 3: SK-OV-3 whole cell lysate Lysates/proteins at 20 µg per lane. Secondary Goat Anti-mouse IgG, (H+L), Peroxidase conjugated at 1/10000 dilution. Predicted band size : 48 kDa Blocking/Dilution buffer: 5% NFDM/TBST.

PAX8 Antibody (Center) - Background

Transcription factor for the thyroid-specific expression of the genes exclusively expressed in the thyroid cell type, maintaining the functional differentiation of such cells.

PAX8 Antibody (Center) - References

- Poleev A.,et al.Development 116:611-623(1992).
Kozmik Z.,et al.Mol. Cell. Biol. 13:6024-6035(1993).
Poleev A.,et al.Eur. J. Biochem. 228:899-911(1995).
Ota T.,et al.Nat. Genet. 36:40-45(2004).

Hillier L.W.,et al.Nature 434:724-731(2005).