

**PLIN3 Antibody**  
**Purified Mouse Monoclonal Antibody (Mab)**  
**Catalog # AM8698b**

**Specification**

---

**PLIN3 Antibody - Product Information**

Application	WB,E
Primary Accession	<a href="#">O60664</a>
Reactivity	Human
Host	Mouse
Clonality	monoclonal
Isotype	IgG2a,k
Calculated MW	47075

**PLIN3 Antibody - Additional Information**

**Gene ID** 10226

**Other Names**

Perilipin-3, 47 kDa mannose 6-phosphate receptor-binding protein, 47 kDa MPR-binding protein, Cargo selection protein TIP47, Mannose-6-phosphate receptor-binding protein 1, Placental protein 17, PP17, PLIN3, M6PRBP1, TIP47

**Target/Specificity**

This PLIN3 antibody is generated from a mouse immunized with a KLH conjugated synthetic peptide between 1-434 amino acids from human PLIN3.

**Dilution**

WB~~1:2000

**Storage**

Maintain refrigerated at 2-8°C for up to 2 weeks. For long term storage store at -20°C in small aliquots to prevent freeze-thaw cycles.

**Precautions**

PLIN3 Antibody is for research use only and not for use in diagnostic or therapeutic procedures.

**PLIN3 Antibody - Protein Information**

**Name** PLIN3

**Synonyms** M6PRBP1, TIP47 {ECO:0000303|PubMed:95901

**Function** Structural component of lipid droplets, which is required for the formation and maintenance of lipid storage droplets (PubMed:[34077757](#)). Required for the transport of mannose 6-phosphate receptors (MPR) from endosomes to the trans-Golgi network (PubMed:[9590177](#)).

**Cellular Location**

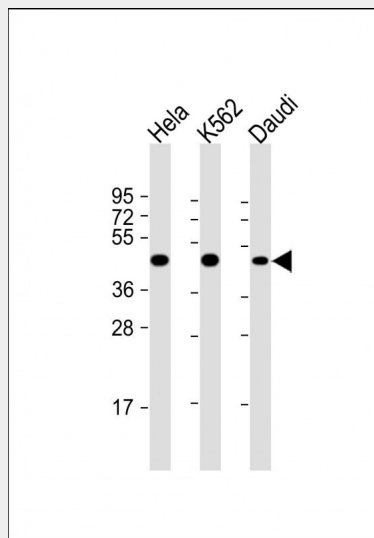
Lipid droplet. Endosome membrane; Peripheral membrane protein; Cytoplasmic side. Cytoplasm.  
Note=Membrane associated on endosomes (PubMed:15545278). Detected in the envelope and the core of lipid bodies and in lipid sails (PubMed:15545278)

### PLIN3 Antibody - Protocols

Provided below are standard protocols that you may find useful for product applications.

- [Western Blot](#)
- [Blocking Peptides](#)
- [Dot Blot](#)
- [Immunohistochemistry](#)
- [Immunofluorescence](#)
- [Immunoprecipitation](#)
- [Flow Cytometry](#)
- [Cell Culture](#)

### PLIN3 Antibody - Images



All lanes : Anti-PLIN3 Antibody at 1:2000 dilution Lane 1: HeLa whole cell lysate Lane 2: K562 whole cell lysate Lane 3: Daudi whole cell lysate Lysates/proteins at 20 µg per lane. Secondary Goat Anti-mouse IgG, (H+L), Peroxidase conjugated at 1/10000 dilution. Predicted band size : 47 kDa Blocking/Dilution buffer: 5% NFDm/TBST.

### PLIN3 Antibody - Background

Required for the transport of mannose 6-phosphate receptors (MPR) from endosomes to the trans-Golgi network.

### PLIN3 Antibody - References

- Diaz E., et al. Cell 93:433-443(1998).  
Than N.G., et al. Eur. J. Biochem. 258:752-757(1998).  
Than N.G., et al. Tumor Biol. 20:184-192(1999).  
Kalinine N., et al. Submitted (MAY-2003) to the EMBL/GenBank/DDBJ databases.  
Ota T., et al. Nat. Genet. 36:40-45(2004).