

PDCD1LG2 Antibody (N-term)
Purified Mouse Monoclonal Antibody (Mab)
Catalog # AM8680b

Specification

PDCD1LG2 Antibody (N-term) - Product Information

Application	WB, IHC-P,E
Primary Accession	O9B051
Reactivity	Human
Host	Mouse
Clonality	monoclonal
Isotype	IgG1,κ
Calculated MW	30957

PDCD1LG2 Antibody (N-term) - Additional Information

Gene ID 80380

Other Names

Programmed cell death 1 ligand 2, PD-1 ligand 2, PD-L2, PDCD1 ligand 2, Programmed death ligand 2, Butyrophilin B7-DC, B7-DC, CD273, PDCD1LG2, B7DC, CD273, PDCD1L2, PDL2

Target/Specificity

This PDCD1LG2 antibody is generated from a mouse immunized with a KLH conjugated synthetic peptide between 40-75 amino acids from the N-terminal region of human PDCD1LG2.

Dilution

WB~~1:8000

IHC-P~~1:25

Format

Purified monoclonal antibody supplied in PBS with 0.09% (W/V) sodium azide. This antibody is purified through a protein G column, followed by dialysis against PBS.

Storage

Maintain refrigerated at 2-8°C for up to 2 weeks. For long term storage store at -20°C in small aliquots to prevent freeze-thaw cycles.

Precautions

PDCD1LG2 Antibody (N-term) is for research use only and not for use in diagnostic or therapeutic procedures.

PDCD1LG2 Antibody (N-term) - Protein Information

Name PDCD1LG2

Synonyms B7DC, CD273, PDCD1L2, PDL2

Function Involved in the costimulatory signal, essential for T-cell proliferation and IFNG production in a PDCD1-independent manner. Interaction with PDCD1 inhibits T-cell proliferation by blocking cell cycle progression and cytokine production (By similarity).

Cellular Location

[Isoform 3]: Secreted [Isoform 1]: Cell membrane; Single-pass type I membrane protein {ECO:0000250|UniProtKB:Q9WUL5, ECO:0000305|PubMed:15340161}

Tissue Location

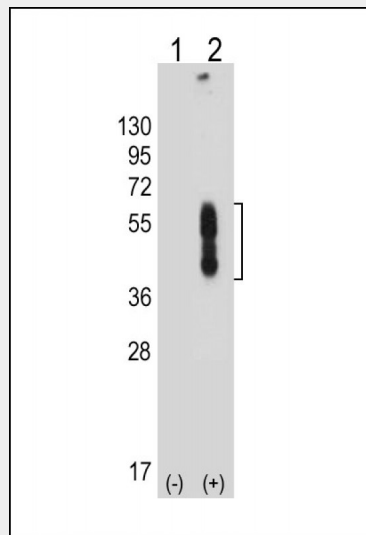
Highly expressed in heart, placenta, pancreas, lung and liver and weakly expressed in spleen, lymph nodes and thymus

PDCD1LG2 Antibody (N-term) - Protocols

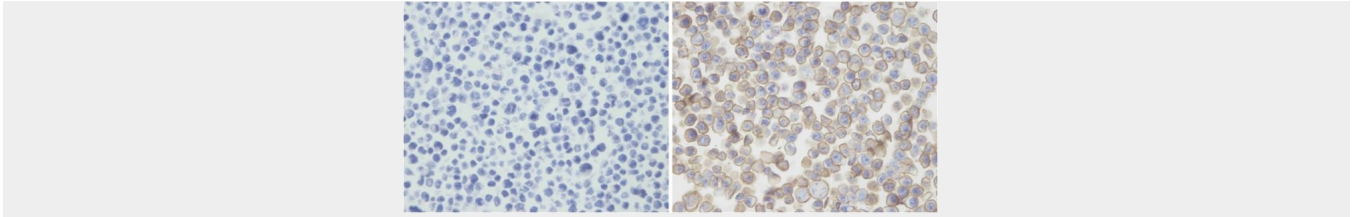
Provided below are standard protocols that you may find useful for product applications.

- [Western Blot](#)
- [Blocking Peptides](#)
- [Dot Blot](#)
- [Immunohistochemistry](#)
- [Immunofluorescence](#)
- [Immunoprecipitation](#)
- [Flow Cytometry](#)
- [Cell Culture](#)

PDCD1LG2 Antibody (N-term) - Images



All lanes : Anti-PDCD1LG2 Antibody (N-term) at 1:8000 dilution Lane 1: Non-transfected 293T whole cell lysate Lane 2: Transfected PD-L2-transfected 293T whole cell lysate Lysates/proteins at 20 µg per lane. Secondary Goat Anti-mouse IgG, (H+L), Peroxidase conjugated at 1/10000 dilution. Predicted band size : 31 kDa Blocking/Dilution buffer: 5% NFDM/TBST.



Immunohistochemical analysis of PDL-2 in untransfected(left) or transfected(right) with 293T cell sections. Cell was fixed with formaldehyde; antigen retrieval was by heat mediation with a EDTA buffer (pH9. 0). Samples were incubated with primary antibody (1:25) for 1 hours at room temperature. A undiluted biotinylated goat polyvalent antibody was used as the secondary antibody.

PDCD1LG2 Antibody (N-term) - Background

Involved in the costimulatory signal, essential for T- cell proliferation and IFNG production in a PDCD1-independent manner. Interaction with PDCD1 inhibits T-cell proliferation by blocking cell cycle progression and cytokine production (By similarity).

PDCD1LG2 Antibody (N-term) - References

Tseng S.-Y.,et al.J. Exp. Med. 193:839-846(2001).
Latchman Y.,et al.Nat. Immunol. 2:261-268(2001).
He X.-H.,et al.Acta Biochim. Biophys. Sin. 36:284-289(2004).
Humphray S.J.,et al.Nature 429:369-374(2004).
Zhang Z.,et al.Protein Sci. 13:2819-2824(2004).