

**FOLR2 Antibody**  
**Purified Mouse Monoclonal Antibody (Mab)**  
**Catalog # AM8660b**

**Specification**

---

**FOLR2 Antibody - Product Information**

Application	<b>WB,E</b>
Primary Accession	<a href="#">P14207</a>
Reactivity	<b>Human</b>
Host	<b>Mouse</b>
Clonality	<b>monoclonal</b>
Isotype	<b>IgG2b,<math>\kappa</math></b>
Calculated MW	<b>29280</b>

**FOLR2 Antibody - Additional Information**

**Gene ID** 2350

**Other Names**

Folate receptor beta, FR-beta, Folate receptor 2, Folate receptor, fetal/placental, Placental folate-binding protein, FBP, FOLR2

**Target/Specificity**

This FOLR2 antibody is generated from a mouse immunized with a recombinant protein from human FOLR2.

**Dilution**

WB~1:1000-1:2000

**Format**

Purified monoclonal antibody supplied in PBS with 0.09% (W/V) sodium azide. This antibody is purified through a protein G column, followed by dialysis against PBS.

**Storage**

Maintain refrigerated at 2-8°C for up to 2 weeks. For long term storage store at -20°C in small aliquots to prevent freeze-thaw cycles.

**Precautions**

FOLR2 Antibody is for research use only and not for use in diagnostic or therapeutic procedures.

**FOLR2 Antibody - Protein Information**

**Name** FOLR2

**Function** Binds to folate and reduced folic acid derivatives and mediates delivery of 5-methyltetrahydrofolate and folate analogs into the interior of cells. Has high affinity for folate and folic acid analogs at neutral pH. Exposure to slightly acidic pH after receptor endocytosis triggers a conformation change that strongly reduces its affinity for folates and mediates their

release.

#### Cellular Location

Cell membrane; Lipid-anchor, GPI-anchor. Secreted

#### Tissue Location

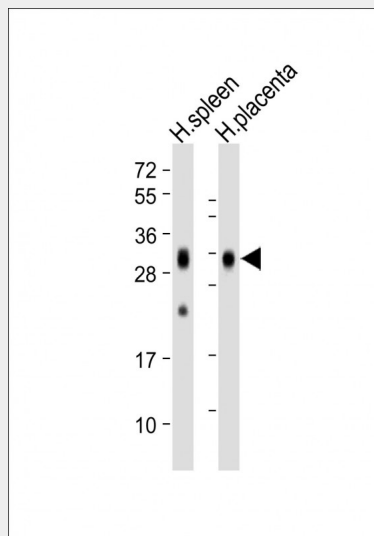
Expressed in placenta and hematopoietic cells. Expression is increased in malignant tissues

### FOLR2 Antibody - Protocols

Provided below are standard protocols that you may find useful for product applications.

- [Western Blot](#)
- [Blocking Peptides](#)
- [Dot Blot](#)
- [Immunohistochemistry](#)
- [Immunofluorescence](#)
- [Immunoprecipitation](#)
- [Flow Cytometry](#)
- [Cell Culture](#)

### FOLR2 Antibody - Images



All lanes : Anti-FOLR2 Antibody at 1:1000-1:2000 dilution Lane 1: Human spleen lysate Lane 2: Human placenta lysate Lysates/proteins at 20 µg per lane. Secondary Goat Anti-mouse IgG, (H+L), Peroxidase conjugated at 1/10000 dilution. Predicted band size : 29 kDa Blocking/Dilution buffer: 5% NFDM/TBST.

### FOLR2 Antibody - Background

Binds to folate and reduced folic acid derivatives and mediates delivery of 5-methyltetrahydrofolate and folate analogs into the interior of cells. Has high affinity for folate and folic acid analogs at neutral pH. Exposure to slightly acidic pH after receptor endocytosis triggers a conformation change that strongly reduces its affinity for folates and mediates their release.

### FOLR2 Antibody - References

Page S.T.,et al.J. Mol. Biol. 229:1175-1183(1993).  
Ratnam M.,et al.Biochemistry 28:8249-8254(1989).  
Sadasivan E.,et al.J. Biol. Chem. 269:4725-4735(1994).  
Suzuki Y.,et al.Submitted (APR-2005) to the EMBL/GenBank/DDBJ databases.  
Freisheim J.H.,et al.Adv. Enzyme Regul. 29:13-26(1989).