

**human CD25 Antibody**  
**Purified Mouse Monoclonal Antibody (Mab)**  
**Catalog # AM8656b**

**Specification**

---

**human CD25 Antibody - Product Information**

Application	FC,E
Primary Accession	<a href="#">unknow</a>
Reactivity	<b>Human</b>
Host	<b>Mouse</b>
Clonality	<b>monoclonal</b>
Isotype	<b>IgG2a</b>

**human CD25 Antibody - Additional Information**

**Dilution**  
FC~~1:50

**Format**  
Purified monoclonal antibody supplied in PBS with 0.09% (W/V) sodium azide. This antibody is purified through a protein G column, followed by dialysis against PBS.

**Storage**  
Maintain refrigerated at 2-8°C for up to 2 weeks. For long term storage store at -20°C in small aliquots to prevent freeze-thaw cycles.

**Precautions**  
human CD25 Antibody is for research use only and not for use in diagnostic or therapeutic procedures.

**human CD25 Antibody - Protein Information**

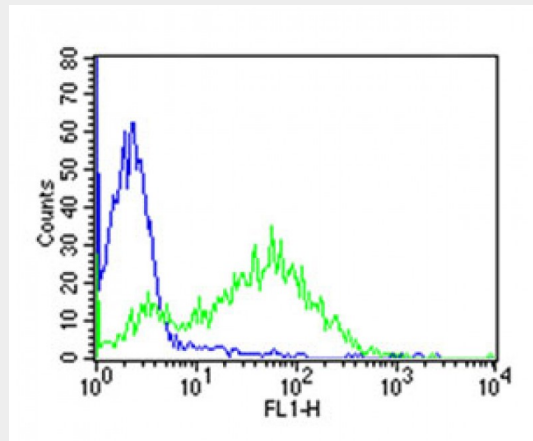
**human CD25 Antibody - Protocols**

Provided below are standard protocols that you may find useful for product applications.

- [Western Blot](#)
- [Blocking Peptides](#)
- [Dot Blot](#)
- [Immunohistochemistry](#)
- [Immunofluorescence](#)
- [Immunoprecipitation](#)
- [Flow Cytometry](#)
- [Cell Culture](#)

**human CD25 Antibody - Images**

---



Overlay histogram showing PHA-stimulated human peripheral blood lymphocytes stained with CD25 antibody (green line). The cells were incubated in 2% bovine serum albumin to block non-specific protein-protein interactions followed by the antibody (1:50 dilution) for 60 min at 37°C. The secondary antibody used was Goat Anti-Mouse IgG, DyLight® 488 Conjugated Highly Cross-Adsorbed (OJ192088) at 1/200 dilution for 40 min at 37°C. Isotype control antibody (blue line) was mouse IgG2a (1 µg/1 × 10<sup>6</sup> cells) used under the same conditions. Acquisition of >10,000 events was performed.