

VILIP1 Antibody
Purified Mouse Monoclonal Antibody (Mab)
Catalog # AM8636b

Specification

VILIP1 Antibody - Product Information

Application	WB,E
Primary Accession	P62760
Other Accession	P62763 , P62764 , Q4R5F7 , P62761 , Q5RD22 , P62762
Reactivity	Human
Predicted	Bovine, Chicken, Mouse, Rat
Host	Mouse
Clonality	monoclonal
Isotype	IgG1,k
Calculated MW	22142

VILIP1 Antibody - Additional Information

Gene ID 7447

Other Names

Visinin-like protein 1, VILIP, VLP-1, Hippocalcin-like protein 3, HLP3, VSNL1, VISL1

Target/Specificity

This VILIP1 antibody is generated from a mouse immunized with a recombinant protein of human VILIP1.

Dilution

WB~~1:4000

Format

Purified monoclonal antibody supplied in PBS with 0.09% (W/V) sodium azide. This antibody is purified through a protein G column, followed by dialysis against PBS.

Storage

Maintain refrigerated at 2-8°C for up to 2 weeks. For long term storage store at -20°C in small aliquots to prevent freeze-thaw cycles.

Precautions

VILIP1 Antibody is for research use only and not for use in diagnostic or therapeutic procedures.

VILIP1 Antibody - Protein Information

Name VSNL1

Synonyms VISL1

Function Regulates (in vitro) the inhibition of rhodopsin phosphorylation in a calcium-dependent manner.

Tissue Location

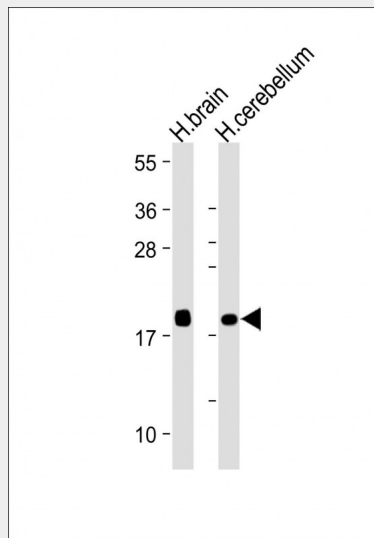
Brain and retina. Neuron-specific in the central and peripheral nervous system. Increased in the cerebrospinal fluid of Alzheimer disease patients (at protein level)

VILIP1 Antibody - Protocols

Provided below are standard protocols that you may find useful for product applications.

- [Western Blot](#)
- [Blocking Peptides](#)
- [Dot Blot](#)
- [Immunohistochemistry](#)
- [Immunofluorescence](#)
- [Immunoprecipitation](#)
- [Flow Cytometry](#)
- [Cell Culture](#)

VILIP1 Antibody - Images



All lanes : Anti-VILIP1 Antibody at 1:4000 dilution Lane 1: Human brain lysate Lane 2: Human cerebellum lysate Lysates/proteins at 20 µg per lane. Secondary Goat Anti-mouse IgG, (H+L), Peroxidase conjugated at 1/10000 dilution. Predicted band size : 22 kDa Blocking/Dilution buffer: 5% NFD/MTBST.

VILIP1 Antibody - Background

Regulates (in vitro) the inhibition of rhodopsin phosphorylation in a calcium-dependent manner.

VILIP1 Antibody - References

- Polymeropoulos M.H., et al. *Genomics* 29:273-275(1995).
Bellingham J., et al. Submitted (DEC-1997) to the EMBL/GenBank/DDBJ databases.
Kobayashi M., et al. *DNA Seq.* 9:171-176(1998).
Mural R.J., et al. Submitted (SEP-2005) to the EMBL/GenBank/DDBJ databases.

Lee J.M., et al. Clin. Chem. 54:1617-1623(2008).