

**DCLK1 Antibody**  
**Purified Mouse Monoclonal Antibody (Mab)**  
**Catalog # AM8593b****Specification**

---

**DCLK1 Antibody - Product Information**

|                   |                        |
|-------------------|------------------------|
| Application       | WB,E                   |
| Primary Accession | <a href="#">O15075</a> |
| Reactivity        | Human, Mouse           |
| Host              | Mouse                  |
| Clonality         | monoclonal             |
| Isotype           | IgG1,k                 |
| Calculated MW     | 82224                  |

**DCLK1 Antibody - Additional Information****Gene ID** 9201**Other Names**

Serine/threonine-protein kinase DCLK1, 2.7.11.1, Doublecortin domain-containing protein 3A, Doublecortin-like and CAM kinase-like 1, Doublecortin-like kinase 1, DCLK1, DCAMKL1, DCDC3A, KIAA0369

**Target/Specificity**

This DCLK1 antibody is generated from a mouse immunized with a recombinant protein of human DCLK1.

**Dilution**

WB~1:4000

**Format**

Purified monoclonal antibody supplied in PBS with 0.09% (W/V) sodium azide. This antibody is purified through a protein G column, followed by dialysis against PBS.

**Storage**

Maintain refrigerated at 2-8°C for up to 2 weeks. For long term storage store at -20°C in small aliquots to prevent freeze-thaw cycles.

**Precautions**

DCLK1 Antibody is for research use only and not for use in diagnostic or therapeutic procedures.

**DCLK1 Antibody - Protein Information****Name** DCLK1**Synonyms** DCAMKL1, DCDC3A, KIAA0369**Function** Probable kinase that may be involved in a calcium-signaling pathway controlling

neuronal migration in the developing brain. May also participate in functions of the mature nervous system.

#### Tissue Location

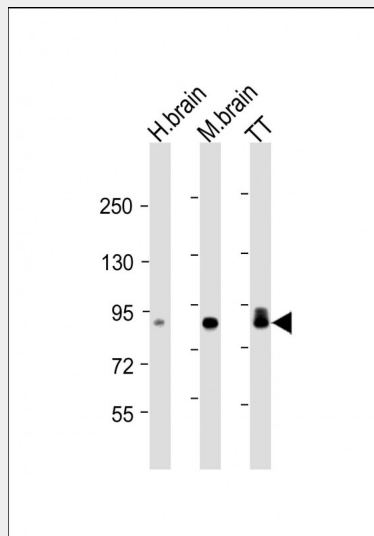
In fetal tissues, highly expressed in brain, detectable in lung and liver, but not in kidney. In adult tissues, expressed ubiquitously in the brain, detectable in the heart, liver, spleen, thymus, prostate, testis, ovary, small intestine and colon. The type A isoforms seem to be expressed predominantly in fetal brain whereas type B isoforms are expressed abundantly in both fetal and adult brain.

#### DCLK1 Antibody - Protocols

Provided below are standard protocols that you may find useful for product applications.

- [Western Blot](#)
- [Blocking Peptides](#)
- [Dot Blot](#)
- [Immunohistochemistry](#)
- [Immunofluorescence](#)
- [Immunoprecipitation](#)
- [Flow Cytometry](#)
- [Cell Culture](#)

#### DCLK1 Antibody - Images



All lanes : Anti-DCLK1 Antibody at 1:4000 dilution Lane 1: human brain lysate Lane 2: mouse brain lysate Lane 3: TT whole cell lysate Lysates/proteins at 20 µg per lane. Secondary Goat Anti-mouse IgG, (H+L), Peroxidase conjugated at 1/10000 dilution. Predicted band size : 82 kDa Blocking/Dilution buffer: 5% NFDM/TBST.

#### DCLK1 Antibody - Background

Probable kinase that may be involved in a calcium- signaling pathway controlling neuronal migration in the developing brain. May also participate in functions of the mature nervous system.

#### DCLK1 Antibody - References

Omori Y.,et al.J. Hum. Genet. 43:169-177(1998).  
Sossey-Alaoui K.,et al.Genomics 56:121-126(1999).  
Nagase T.,et al.DNA Res. 4:141-150(1997).  
Ota T.,et al.Nat. Genet. 36:40-45(2004).  
Dunham A.,et al.Nature 428:522-528(2004).