

CBL Antibody
Purified Mouse Monoclonal Antibody (Mab)
Catalog # AM8590b

Specification

CBL Antibody - Product Information

Application	WB,E
Primary Accession	P22681
Reactivity	Human
Host	Mouse
Clonality	monoclonal
Isotype	IgG2b,k
Calculated MW	99633

CBL Antibody - Additional Information

Gene ID 867

Other Names

E3 ubiquitin-protein ligase CBL, 6.3.2.-, Casitas B-lineage lymphoma proto-oncogene, Proto-oncogene c-Cbl, RING finger protein 55, Signal transduction protein CBL, CBL, CBL2, RNF55

Target/Specificity

This CBL antibody is generated from a mouse immunized with a KLH conjugated synthetic peptide between 450-644 amino acids from human CBL.

Dilution

WB~~1:2000

Format

Purified monoclonal antibody supplied in PBS with 0.09% (W/V) sodium azide. This antibody is purified through a protein G column, followed by dialysis against PBS.

Storage

Maintain refrigerated at 2-8°C for up to 2 weeks. For long term storage store at -20°C in small aliquots to prevent freeze-thaw cycles.

Precautions

CBL Antibody is for research use only and not for use in diagnostic or therapeutic procedures.

CBL Antibody - Protein Information

Name CBL

Synonyms CBL2, RNF55

Function Adapter protein that functions as a negative regulator of many signaling pathways that are triggered by activation of cell surface receptors. Acts as an E3 ubiquitin-protein ligase, which

accepts ubiquitin from specific E2 ubiquitin-conjugating enzymes, and then transfers it to substrates promoting their degradation by the proteasome (PubMed:[17094949](#)). Ubiquitinates SPRY2 (PubMed:[17094949](#), PubMed:[17974561](#)). Ubiquitinates EGFR (PubMed:[17974561](#)). Recognizes activated receptor tyrosine kinases, including KIT, FLT1, FGFR1, FGFR2, PDGFRA, PDGFRB, CSF1R, EPHA8 and KDR and terminates signaling. Recognizes membrane-bound HCK, SRC and other kinases of the SRC family and mediates their ubiquitination and degradation. Participates in signal transduction in hematopoietic cells. Plays an important role in the regulation of osteoblast differentiation and apoptosis. Essential for osteoclastic bone resorption. The 'Tyr-731' phosphorylated form induces the activation and recruitment of phosphatidylinositol 3-kinase to the cell membrane in a signaling pathway that is critical for osteoclast function. May be functionally coupled with the E2 ubiquitin- protein ligase UB2D3. In association with CBLB, required for proper feedback inhibition of ciliary platelet-derived growth factor receptor- alpha (PDGFRA) signaling pathway via ubiquitination and internalization of PDGFRA (By similarity).

Cellular Location

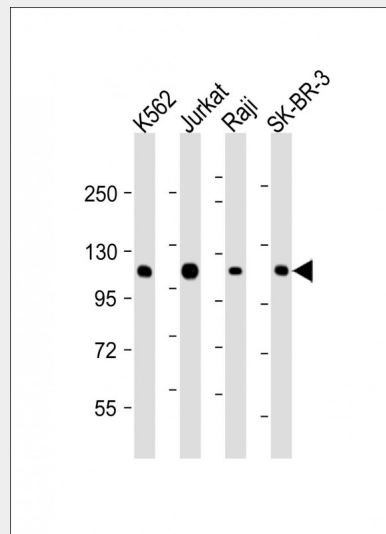
Cytoplasm. Cell membrane. Cell projection, cilium. Golgi apparatus. Note=Colocalizes with FGFR2 in lipid rafts at the cell membrane

CBL Antibody - Protocols

Provided below are standard protocols that you may find useful for product applications.

- [Western Blot](#)
- [Blocking Peptides](#)
- [Dot Blot](#)
- [Immunohistochemistry](#)
- [Immunofluorescence](#)
- [Immunoprecipitation](#)
- [Flow Cytometry](#)
- [Cell Culture](#)

CBL Antibody - Images



All lanes : Anti-CBL Antibody at 1:2000 dilution Lane 1: K562 whole cell lysate Lane 2: Jurkat whole cell lysate Lane 3: Raji whole cell lysate Lane 4: SK-BR-3 whole cell lysate Lysates/proteins at 20 µg per lane. Secondary Goat Anti-mouse IgG, (H+L), Peroxidase conjugated at 1/10000 dilution. Predicted band size : 100 kDa Blocking/Dilution buffer: 5% NFD/MTBST.

CBL Antibody - Background

Adapter protein that functions as a negative regulator of many signaling pathways that are triggered by activation of cell surface receptors. Acts as an E3 ubiquitin-protein ligase, which accepts ubiquitin from specific E2 ubiquitin-conjugating enzymes, and then transfers it to substrates promoting their degradation by the proteasome. Recognizes activated receptor tyrosine kinases, including KIT, FLT1, FGFR1, FGFR2, PDGFRA, PDGFRB, EGFR, CSF1R, EPHA8 and KDR and terminates signaling. Recognizes membrane-bound HCK, SRC and other kinases of the SRC family and mediates their ubiquitination and degradation. Participates in signal transduction in hematopoietic cells. Plays an important role in the regulation of osteoblast differentiation and apoptosis. Essential for osteoclastic bone resorption. The 'Tyr-731' phosphorylated form induces the activation and recruitment of phosphatidylinositol 3-kinase to the cell membrane in a signaling pathway that is critical for osteoclast function. May be functionally coupled with the E2 ubiquitin-protein ligase UB2D3.

CBL Antibody - References

- Blake T.J., et al. *Oncogene* 6:653-657(1991).
Taylor T.D., et al. *Nature* 440:497-500(2006).
Howlett C.J., et al. *Biochem. Biophys. Res. Commun.* 257:129-138(1999).
Joazeiro C.A., et al. *Science* 286:309-312(1999).
Donovan J.A., et al. *J. Biol. Chem.* 269:22921-22924(1994).