

Natriuretic Peptide Receptor C Antibody
Purified Mouse Monoclonal Antibody (Mab)
Catalog # AM8588b

Specification

Natriuretic Peptide Receptor C Antibody - Product Information

| | |
|-------------------|------------------------|
| Application | WB,E |
| Primary Accession | P17342 |
| Reactivity | Human |
| Host | Mouse |
| Clonality | monoclonal |
| Isotype | IgG1,k |
| Calculated MW | 59808 |

Natriuretic Peptide Receptor C Antibody - Additional Information

Gene ID 4883

Other Names

Atrial natriuretic peptide receptor 3, Atrial natriuretic peptide clearance receptor, Atrial natriuretic peptide receptor type C, ANP-C, ANPR-C, NPR-C, NPR3, ANPRC, C5orf23, NPRC

Target/Specificity

This Natriuretic Peptide Receptor C antibody is generated from a mouse immunized with a KLH conjugated synthetic peptide between 200-420 amino acids from the human region of human Natriuretic Peptide Receptor C.

Dilution

WB~~1:2000

Format

Purified monoclonal antibody supplied in PBS with 0.09% (W/V) sodium azide. This antibody is purified through a protein G column, followed by dialysis against PBS.

Storage

Maintain refrigerated at 2-8°C for up to 2 weeks. For long term storage store at -20°C in small aliquots to prevent freeze-thaw cycles.

Precautions

Natriuretic Peptide Receptor C Antibody is for research use only and not for use in diagnostic or therapeutic procedures.

Natriuretic Peptide Receptor C Antibody - Protein Information

Name NPR3

Synonyms ANPRC, C5orf23, NPRC

Function Receptor for the natriuretic peptide hormones, binding with similar affinities atrial natriuretic peptide NPPA/ANP, brain natriuretic peptide NPPB/BNP, and C-type natriuretic peptide NPPC/CNP. May function as a clearance receptor for NPPA, NPPB and NPPC, regulating their local concentrations and effects. May regulate diuresis, blood pressure and skeletal development. Does not have guanylate cyclase activity.

Cellular Location

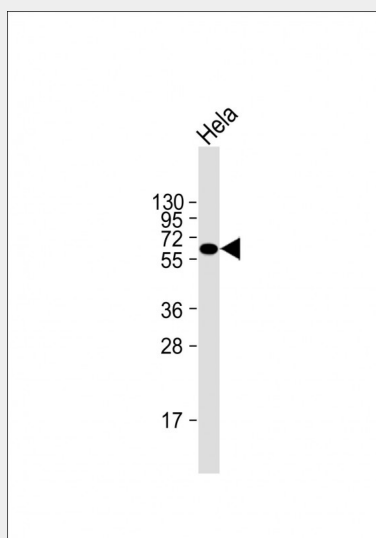
Cell membrane; Single-pass type I membrane protein

Natriuretic Peptide Receptor C Antibody - Protocols

Provided below are standard protocols that you may find useful for product applications.

- [Western Blot](#)
- [Blocking Peptides](#)
- [Dot Blot](#)
- [Immunohistochemistry](#)
- [Immunofluorescence](#)
- [Immunoprecipitation](#)
- [Flow Cytometry](#)
- [Cell Culture](#)

Natriuretic Peptide Receptor C Antibody - Images



Anti-Natriuretic Peptide Receptor C Antibody at 1:2000 dilution + HeLa whole cell lysate Lysates/proteins at 20 μ g per lane. Secondary Goat Anti-mouse IgG, (H+L), Peroxidase conjugated at 1/10000 dilution. Predicted band size : 60 kDa Blocking/Dilution buffer: 5% NFDM/TBST.

Natriuretic Peptide Receptor C Antibody - Background

Receptor for the natriuretic peptide hormones, binding with similar affinities atrial natriuretic peptide NPPA/ANP, brain natriuretic peptide NPPB/BNP, and C-type natriuretic peptide NPPC/CNP. May function as a clearance receptor for NPPA, NPPB and NPPC, regulating their local concentrations and effects. May regulate diuresis, blood pressure and skeletal development. Does not have guanylate cyclase activity.

Natriuretic Peptide Receptor C Antibody - References

Lowe D.G.,et al.Nucleic Acids Res. 18:3412-3412(1990).
Porter J.G.,et al.Biochem. Biophys. Res. Commun. 171:796-803(1990).
Rae J.L.,et al.Submitted (NOV-1997) to the EMBL/GenBank/DDBJ databases.
Ota T.,et al.Nat. Genet. 36:40-45(2004).
Schmutz J.,et al.Nature 431:268-274(2004).