

GOLGA5 Antibody
Purified Mouse Monoclonal Antibody (Mab)
Catalog # AM8577b

Specification

GOLGA5 Antibody - Product Information

Application	WB,E
Primary Accession	Q8TBA6
Reactivity	Human
Host	Mouse
Clonality	monoclonal
Isotype	IgG1,k
Calculated MW	83024

GOLGA5 Antibody - Additional Information

Gene ID 9950

Other Names

Golgin subfamily A member 5, Cell proliferation-inducing gene 31 protein, Golgin-84, Protein Ret-II, RET-fused gene 5 protein, GOLGA5, RETII, RFG5

Target/Specificity

This GOLGA5 antibody is generated from a mouse immunized with a recombinant protein between 1-300 amino acids from human GOLGA5.

Dilution

WB~~1:2000

Format

Purified monoclonal antibody supplied in PBS with 0.09% (W/V) sodium azide. This antibody is purified through a protein G column, followed by dialysis against PBS.

Storage

Maintain refrigerated at 2-8°C for up to 2 weeks. For long term storage store at -20°C in small aliquots to prevent freeze-thaw cycles.

Precautions

GOLGA5 Antibody is for research use only and not for use in diagnostic or therapeutic procedures.

GOLGA5 Antibody - Protein Information

Name GOLGA5

Synonyms RETII, RFG5

Function Involved in maintaining Golgi structure. Stimulates the formation of Golgi stacks and ribbons. Involved in intra-Golgi retrograde transport.

Cellular Location

Golgi apparatus membrane; Single-pass type IV membrane protein. Note=Found throughout the Golgi, both on cisternae and, at higher abundance, on the tubulo-vesicular structures of the cis-Golgi network

Tissue Location

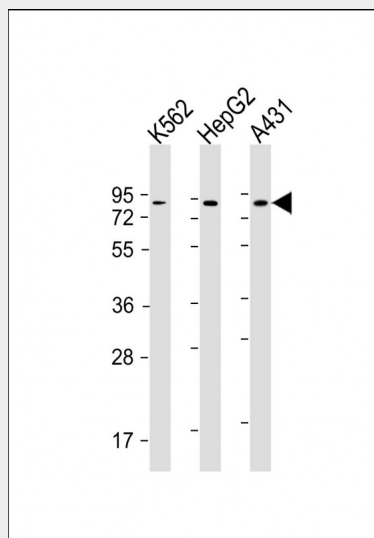
Ubiquitous. Highly expressed in seminiferous tubules and Leydig cells in testis, and detected at much lower levels in the other tissues tested. Expression is very low or not detectable in spermatozoa.

GOLGA5 Antibody - Protocols

Provided below are standard protocols that you may find useful for product applications.

- [Western Blot](#)
- [Blocking Peptides](#)
- [Dot Blot](#)
- [Immunohistochemistry](#)
- [Immunofluorescence](#)
- [Immunoprecipitation](#)
- [Flow Cytometry](#)
- [Cell Culture](#)

GOLGA5 Antibody - Images



All lanes : Anti-GOLGA5 Antibody at 1:2000 dilution Lane 1: K562 whole cell lysate Lane 2: HepG2 whole cell lysate Lane 3: A431 whole cell lysate Lysates/proteins at 20 µg per lane. Secondary Goat Anti-mouse IgG, (H+L), Peroxidase conjugated at 1/10000 dilution. Predicted band size : 83 kDa Blocking/Dilution buffer: 5% NFDN/TBST.

GOLGA5 Antibody - Background

Involved in maintaining Golgi structure. Stimulates the formation of Golgi stacks and ribbons. Involved in intra-Golgi retrograde transport.

GOLGA5 Antibody - References

Bascom R.A., et al. J. Biol. Chem. 274:2953-2962(1999).

Kim J.W., et al. Submitted (JUN-2004) to the EMBL/GenBank/DDBJ databases.

Heilig R., et al. Nature 421:601-607(2003).

Mural R.J., et al. Submitted (JUL-2005) to the EMBL/GenBank/DDBJ databases.

Ishizaka Y., et al. Oncogene 4:789-794(1989).