

PBRM1 Antibody
Purified Mouse Monoclonal Antibody (Mab)
Catalog # AM8533b

Specification

PBRM1 Antibody - Product Information

Application	WB,E
Primary Accession	Q86U86
Reactivity	Human
Host	Mouse
Clonality	monoclonal
Isotype	IgG1,k
Calculated MW	192948

PBRM1 Antibody - Additional Information

Gene ID 55193

Other Names

Protein polybromo-1, hPB1, BRG1-associated factor 180, BAF180, Polybromo-1D, PBRM1, BAF180, PB1

Target/Specificity

This PBRM1 antibody is generated from a mouse immunized with a recombinant protein of human PBRM1.

Dilution

WB ~ ~ 1:1000

Format

Purified monoclonal antibody supplied in PBS with 0.09% (W/V) sodium azide. This antibody is purified through a protein G column, followed by dialysis against PBS.

Storage

Maintain refrigerated at 2-8°C for up to 2 weeks. For long term storage store at -20°C in small aliquots to prevent freeze-thaw cycles.

Precautions

PBRM1 Antibody is for research use only and not for use in diagnostic or therapeutic procedures.

PBRM1 Antibody - Protein Information

Name PBRM1

Synonyms BAF180, PB1

Function Involved in transcriptional activation and repression of select genes by chromatin remodeling (alteration of DNA-nucleosome topology). Required for the stability of the SWI/SNF

chromatin remodeling complex SWI/SNF-B (PBAF). Acts as a negative regulator of cell proliferation.

Cellular Location

Nucleus

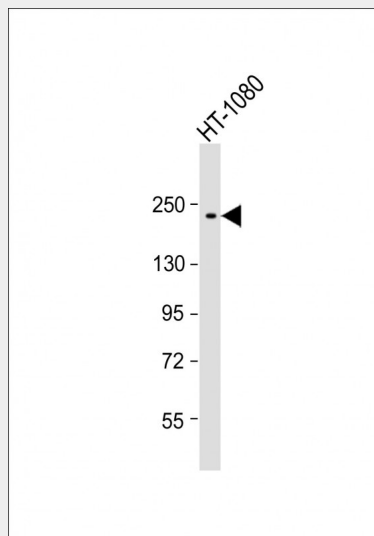
Tissue Location

Widely expressed..

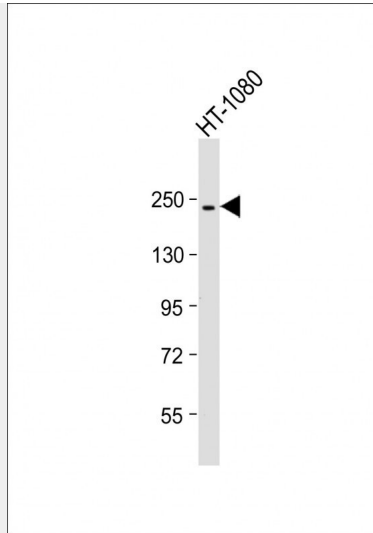
PBRM1 Antibody - Protocols

Provided below are standard protocols that you may find useful for product applications.

- [Western Blot](#)
- [Blocking Peptides](#)
- [Dot Blot](#)
- [Immunohistochemistry](#)
- [Immunofluorescence](#)
- [Immunoprecipitation](#)
- [Flow Cytometry](#)
- [Cell Culture](#)

PBRM1 Antibody - Images

Anti-PBRM1 Antibody at 1:500 dilution + HT-1080 whole cell lysate Lysates/proteins at 20 µg per lane. Secondary Goat Anti-mouse IgG, (H+L), Peroxidase conjugated at 1/10000 dilution. Predicted band size : 193 kDa Blocking/Dilution buffer: 5% NFDN/TBST.



Anti-PBRM1 Antibody at 1:1000 dilution + HT-1080 whole cell lysate Lysates/proteins at 20 µg per lane. Secondary Goat Anti-mouse IgG, (H+L), Peroxidase conjugated at 1/10000 dilution. Predicted band size : 193 kDa Blocking/Dilution buffer: 5% NFDN/TBST.

PBRM1 Antibody - Background

Involved in transcriptional activation and repression of select genes by chromatin remodeling (alteration of DNA-nucleosome topology). Acts as a negative regulator of cell proliferation.

PBRM1 Antibody - References

- Xue Y., et al. Proc. Natl. Acad. Sci. U.S.A. 97:13015-13020(2000).
- Horikawa I., et al. DNA Seq. 13:211-215(2002).
- Sekine I., et al. Oncogene 24:2735-2738(2005).
- Ota T., et al. Nat. Genet. 36:40-45(2004).
- Lemon B., et al. Nature 414:924-928(2001).