

**RASSF2 Antibody**  
**Purified Mouse Monoclonal Antibody (Mab)**  
**Catalog # AM8525b**

**Specification**

---

**RASSF2 Antibody - Product Information**

Application	<b>WB, FC,E</b>
Primary Accession	<a href="#">P50749</a>
Reactivity	<b>Human</b>
Host	<b>Mouse</b>
Clonality	<b>monoclonal</b>
Isotype	<b>IgG2a,<math>\kappa</math></b>
Calculated MW	<b>37790</b>

**RASSF2 Antibody - Additional Information**

**Gene ID** 9770

**Other Names**

Ras association domain-containing protein 2, RASSF2, KIAA0168

**Target/Specificity**

This RASSF2 antibody is generated from a mouse immunized with a recombinant protein between 1-326 amino acids from human RASSF2.

**Dilution**

WB~~1:2000

FC~~1:25

**Format**

Purified monoclonal antibody supplied in PBS with 0.09% (W/V) sodium azide. This antibody is purified through a protein G column, followed by dialysis against PBS.

**Storage**

Maintain refrigerated at 2-8°C for up to 2 weeks. For long term storage store at -20°C in small aliquots to prevent freeze-thaw cycles.

**Precautions**

RASSF2 Antibody is for research use only and not for use in diagnostic or therapeutic procedures.

**RASSF2 Antibody - Protein Information**

**Name** RASSF2

**Synonyms** CENP-34 {ECO:0000303|PubMed:20813266}, K

**Function** Potential tumor suppressor. Acts as a KRAS-specific effector protein. May promote apoptosis and cell cycle arrest. Stabilizes STK3/MST2 by protecting it from proteasomal

degradation.

#### Cellular Location

Nucleus. Cytoplasm. Chromosome, centromere, kinetochore. Note=Translocates to the cytoplasm in the presence of STK3/MST2 and STK4/MST1

#### Tissue Location

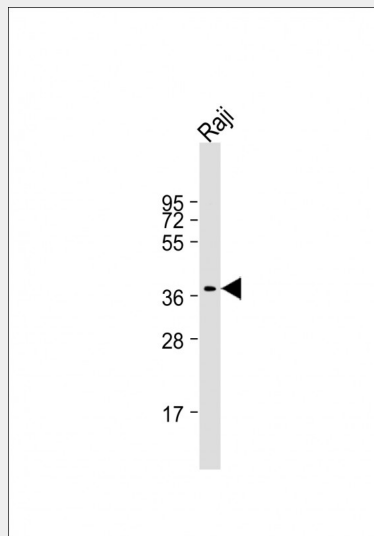
Widely expressed with highest levels in brain, placenta, peripheral blood and lung. Frequently down-regulated in lung tumor cell lines.

### RASSF2 Antibody - Protocols

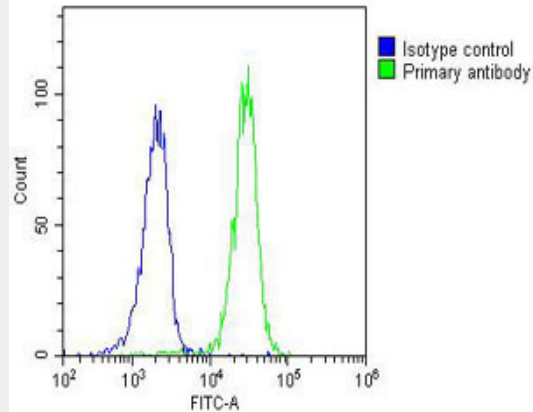
Provided below are standard protocols that you may find useful for product applications.

- [Western Blot](#)
- [Blocking Peptides](#)
- [Dot Blot](#)
- [Immunohistochemistry](#)
- [Immunofluorescence](#)
- [Immunoprecipitation](#)
- [Flow Cytometry](#)
- [Cell Culture](#)

### RASSF2 Antibody - Images



Anti-RASSF2 Antibody at 1:2000 dilution + Raji whole cell lysate Lysates/proteins at 20 µg per lane. Secondary Goat Anti-mouse IgG, (H+L), Peroxidase conjugated at 1/10000 dilution. Predicted band size : 38 kDa Blocking/Dilution buffer: 5% NFDN/TBST.



Overlay histogram showing Raji cells stained with AM8525b (green line). The cells were fixed with 2% paraformaldehyde (10 min) and then permeabilized with 90% methanol for 10 min. The cells were then incubated in 2% bovine serum albumin to block non-specific protein-protein interactions followed by the antibody (AM8525b, 1:25 dilution) for 60 min at 37°C. The secondary antibody used was Goat-Anti-Mouse IgG, DyLight® 488 Conjugated Highly Cross-Adsorbed(OJ192088) at 1/200 dilution for 40 min at 37°C. Isotype control antibody (blue line) was mouse IgG2a (1µg/1x10<sup>6</sup> cells) used under the same conditions. Acquisition of >10,000 events was performed.

#### **RASSF2 Antibody - Background**

Potential tumor suppressor. Acts as a KRAS-specific effector protein. May promote apoptosis and cell cycle arrest. Stabilizes STK3/MST2 by protecting it from proteasomal degradation.

#### **RASSF2 Antibody - References**

Burbee D.G., et al. Submitted (SEP-2002) to the EMBL/GenBank/DDBJ databases.  
Nagase T., et al. DNA Res. 3:17-24(1996).  
Ota T., et al. Nat. Genet. 36:40-45(2004).  
Suzuki Y., et al. Submitted (APR-2005) to the EMBL/GenBank/DDBJ databases.  
Bechtel S., et al. BMC Genomics 8:399-399(2007).