

**RRAS2 Antibody**  
**Purified Mouse Monoclonal Antibody (Mab)**  
**Catalog # AM8512b**

**Specification**

---

**RRAS2 Antibody - Product Information**

Application	WB,E
Primary Accession	<a href="#">P62070</a>
Other Accession	<a href="#">P62071</a>
Reactivity	Human, Mouse
Predicted	Mouse
Host	Mouse
Clonality	monoclonal
Isotype	IgG1,k
Calculated MW	23400

**RRAS2 Antibody - Additional Information**

**Gene ID** 22800

**Other Names**

Ras-related protein R-Ras2, Ras-like protein TC21, Teratocarcinoma oncogene, RRAS2, TC21

**Target/Specificity**

This RRAS2 antibody is generated from a mouse immunized with a recombinant protein of human RRAS2.

**Dilution**

WB~~1:4000

**Format**

Purified monoclonal antibody supplied in PBS with 0.09% (W/V) sodium azide. This antibody is purified through a protein G column, followed by dialysis against PBS.

**Storage**

Maintain refrigerated at 2-8°C for up to 2 weeks. For long term storage store at -20°C in small aliquots to prevent freeze-thaw cycles.

**Precautions**

RRAS2 Antibody is for research use only and not for use in diagnostic or therapeutic procedures.

**RRAS2 Antibody - Protein Information**

**Name** RRAS2 ([HGNC:17271](#))

**Synonyms** TC21

**Function** GTP-binding protein with GTPase activity involved in the regulation of MAPK signaling

pathway, thereby controlling multiple cellular processes (PubMed:[31130282](#)). Involved in the regulation of MAPK signaling pathway (PubMed:[31130282](#), PubMed:[31130285](#)). Regulation of craniofacial development (PubMed:[31130282](#), PubMed:[31130285](#)).

#### Cellular Location

Cell membrane; Lipid-anchor; Cytoplasmic side. Golgi apparatus membrane; Lipid- anchor

#### Tissue Location

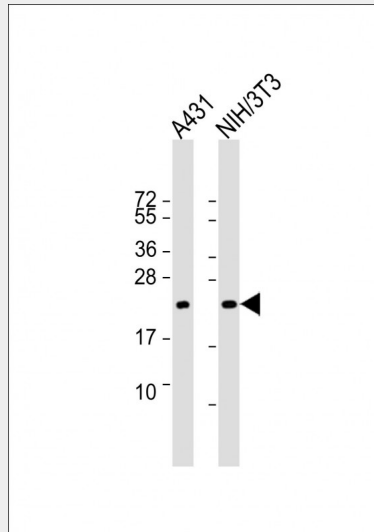
Ubiquitously present in all tissues examined, with the highest levels in heart, placenta, and skeletal muscle. Moderate levels in lung and liver; low levels in brain, kidney, and pancreas

### RRAS2 Antibody - Protocols

Provided below are standard protocols that you may find useful for product applications.

- [Western Blot](#)
- [Blocking Peptides](#)
- [Dot Blot](#)
- [Immunohistochemistry](#)
- [Immunofluorescence](#)
- [Immunoprecipitation](#)
- [Flow Cytometry](#)
- [Cell Culture](#)

### RRAS2 Antibody - Images



All lanes : Anti-RRAS2 Antibody at 1:4000 dilution Lane 1: A431 whole cell lysate Lane 2: NIH/3T3 whole cell lysate Lysates/proteins at 20 µg per lane. Secondary Goat Anti-mouse IgG, (H+L), Peroxidase conjugated at 1/10000 dilution. Predicted band size : 23 kDa Blocking/Dilution buffer: 5% NFDN/TBST.

### RRAS2 Antibody - Background

It is a plasma membrane-associated GTP-binding protein with GTPase activity. Might transduce growth inhibitory signals across the cell membrane, exerting its effect through an effector shared with the Ras proteins but in an antagonistic fashion.

**RRAS2 Antibody - References**

- Drivas G.T., et al. Mol. Cell. Biol. 10:1793-1798(1990).  
Chan A.M.-L., et al. Proc. Natl. Acad. Sci. U.S.A. 91:7558-7562(1994).  
Puhl H.L. III, et al. Submitted (MAR-2002) to the EMBL/GenBank/DDBJ databases.  
Ota T., et al. Nat. Genet. 36:40-45(2004).  
Taylor T.D., et al. Nature 440:497-500(2006).