

RBM6 Antibody
Purified Mouse Monoclonal Antibody (Mab)
Catalog # AM8505b

Specification

RBM6 Antibody - Product Information

| | |
|-------------------|------------------------|
| Application | WB,E |
| Primary Accession | P78332 |
| Reactivity | Human |
| Host | Mouse |
| Clonality | monoclonal |
| Isotype | IgG1,k |
| Calculated MW | 128644 |

RBM6 Antibody - Additional Information

Gene ID 10180

Other Names

RNA-binding protein 6, Lung cancer antigen NY-LU-12, Protein G16, RNA-binding motif protein 6, RNA-binding protein DEF-3, RBM6, DEF3

Target/Specificity

This RBM6 antibody is generated from a mouse immunized with a recombinant protein of human RBM6.

Dilution

WB~~1:1000

Format

Purified monoclonal antibody supplied in PBS with 0.09% (W/V) sodium azide. This antibody is purified through a protein G column, followed by dialysis against PBS.

Storage

Maintain refrigerated at 2-8°C for up to 2 weeks. For long term storage store at -20°C in small aliquots to prevent freeze-thaw cycles.

Precautions

RBM6 Antibody is for research use only and not for use in diagnostic or therapeutic procedures.

RBM6 Antibody - Protein Information

Name RBM6

Synonyms DEF3

Function Specifically binds poly(G) RNA homopolymers in vitro.

Cellular Location

Nucleus.

Tissue Location

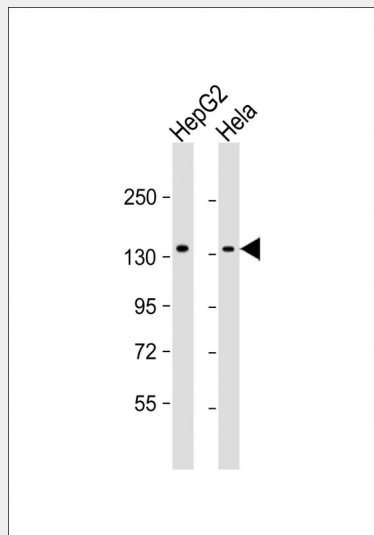
Ubiquitous in adults.

RBM6 Antibody - Protocols

Provided below are standard protocols that you may find useful for product applications.

- [Western Blot](#)
- [Blocking Peptides](#)
- [Dot Blot](#)
- [Immunohistochemistry](#)
- [Immunofluorescence](#)
- [Immunoprecipitation](#)
- [Flow Cytometry](#)
- [Cell Culture](#)

RBM6 Antibody - Images



All lanes : Anti-RBM6 Antibody at 1:1000 dilution Lane 1: HepG2 whole cell lysate Lane 2: HeLa whole cell lysate Lysates/proteins at 20 µg per lane. Secondary Goat Anti-mouse IgG, (H+L), Peroxidase conjugated at 1/10000 dilution. Predicted band size : 129 kDa Blocking/Dilution buffer: 5% NFD/MTBST.

RBM6 Antibody - Background

Specifically binds poly(G) RNA homopolymers in vitro.

RBM6 Antibody - References

- Gure A.O.,et al.Cancer Res. 58:1034-1041(1998).
Timmer T.,et al.Eur. J. Hum. Genet. 7:478-486(1999).
Drabkin H.A.,et al.Oncogene 18:2589-2597(1999).
Latif F.,et al.Submitted (SEP-1998) to the EMBL/GenBank/DDBJ databases.
Ota T.,et al.Nat. Genet. 36:40-45(2004).

