

MKRN2 Antibody
Purified Mouse Monoclonal Antibody (Mab)
Catalog # AM8503b

Specification

MKRN2 Antibody - Product Information

Application	IF, WB, IHC-P, FC,E
Primary Accession	O9H000
Reactivity	Human
Host	Mouse
Clonality	monoclonal
Isotype	IgG1,k
Calculated MW	46940

MKRN2 Antibody - Additional Information

Gene ID 23609

Other Names

Probable E3 ubiquitin-protein ligase makorin-2, 632-, RING finger protein 62, MKRN2, RNF62

Target/Specificity

This MKRN2 antibody is generated from a mouse immunized with recombinant protein.

Dilution

IF~~1:25

WB~~1:4000

IHC-P~~1:25

FC~~1:25

Format

Purified monoclonal antibody supplied in PBS with 0.09% (W/V) sodium azide. This antibody is purified through a protein G column, followed by dialysis against PBS.

Storage

Maintain refrigerated at 2-8°C for up to 2 weeks. For long term storage store at -20°C in small aliquots to prevent freeze-thaw cycles.

Precautions

MKRN2 Antibody is for research use only and not for use in diagnostic or therapeutic procedures.

MKRN2 Antibody - Protein Information

Name MKRN2

Synonyms RNF62

Function E3 ubiquitin ligase catalyzing the covalent attachment of ubiquitin moieties onto

substrate proteins (By similarity). Promotes the polyubiquitination and proteasome-dependent degradation of RELA/p65, thereby suppressing RELA-mediated NF-kappaB transactivation and negatively regulating inflammatory responses (By similarity). Plays a role in the regulation of spermiation and in male fertility (By similarity).

Cellular Location

Cytoplasm {ECO:0000250|UniProtKB:Q9ERV1}. Nucleus {ECO:0000250|UniProtKB:Q9ERV1}

Tissue Location

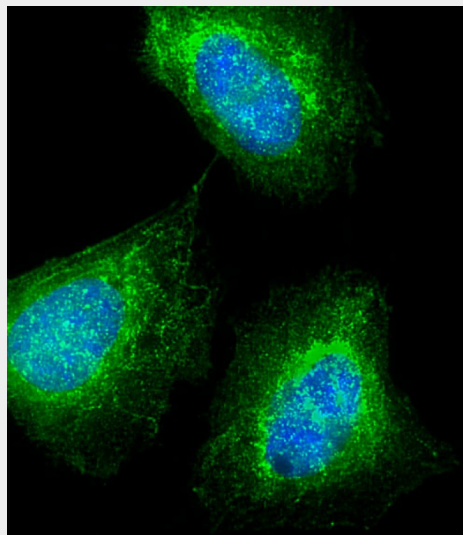
Expressed in sperm, with significantly reduced expression in sperm of patients with oligoasthenoteratozoospermia (at protein level) (PubMed:28008940). Widely expressed with expression in testis, ovary, small intestine, colon, peripheral blood leukocytes, fetal liver, bone marrow, thymus, lymph node and spleen (PubMed:11597136).

MKRN2 Antibody - Protocols

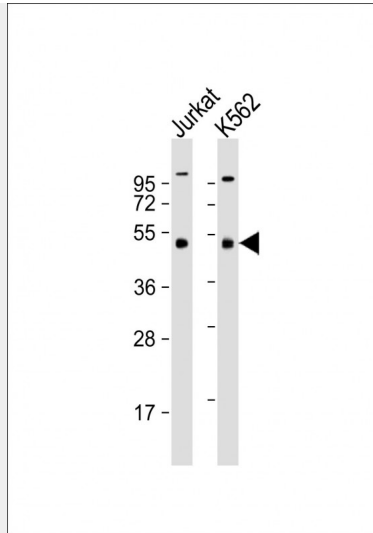
Provided below are standard protocols that you may find useful for product applications.

- [Western Blot](#)
- [Blocking Peptides](#)
- [Dot Blot](#)
- [Immunohistochemistry](#)
- [Immunofluorescence](#)
- [Immunoprecipitation](#)
- [Flow Cytometry](#)
- [Cell Culture](#)

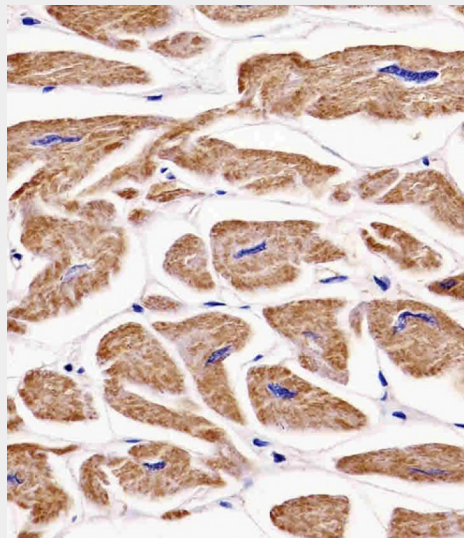
MKRN2 Antibody - Images



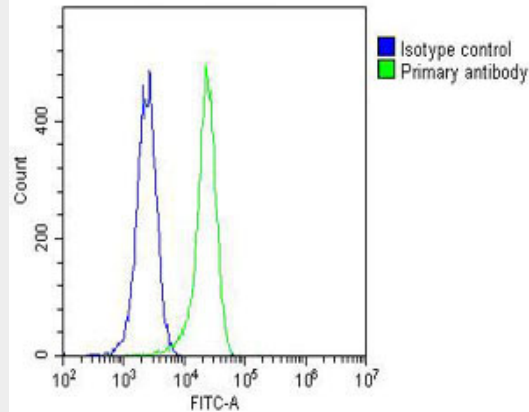
Immunofluorescent analysis of 4% paraformaldehyde-fixed, 0.1% Triton X-100 permeabilized U-2 OS (human osteosarcoma cell line) cells labeling MKRN2 with AM8503b at 1/25 dilution, followed by Dylight® 488-conjugated goat anti-mouse IgG (NA166821) secondary antibody at 1/200 dilution (green). Immunofluorescence image showing cytoplasm and nucleus staining on U-2 OS cell line. The nuclear counter stain is DAPI (blue).



All lanes : Anti-MKRN2 Antibody at 1:4000 dilution Lane 1: Jurkat whole cell lysate Lane 2: K562 whole cell lysate Lysates/proteins at 20 μ g per lane. Secondary Goat Anti-mouse IgG, (H+L), Peroxidase conjugated at 1/10000 dilution. Predicted band size : 47 kDa Blocking/Dilution buffer: 5% NFDM/TBST.



AM8503b staining MKRN2 in human heart tissue sections by Immunohistochemistry (IHC-P - paraformaldehyde-fixed, paraffin-embedded sections). Tissue was fixed with formaldehyde and blocked with 3% BSA for 0.5 hour at room temperature; antigen retrieval was by heat mediation with a citrate buffer (pH6). Samples were incubated with primary antibody (1/25) for 1 hours at 37°C. A undiluted biotinylated goat polyvalent antibody was used as the secondary antibody.



Overlay histogram showing K562 cells stained with AM8503b(green line). The cells were fixed with 2% paraformaldehyde (10 min) and then permeabilized with 90% methanol for 10 min. The cells were then incubated in 2% bovine serum albumin to block non-specific protein-protein interactions followed by the antibody (AM8503b, 1:25 dilution) for 60 min at 37°C. The secondary antibody used was Goat-Anti-Mouse IgG, DyLight® 488 Conjugated Highly Cross-Adsorbed(OJ192088) at 1/200 dilution for 40 min at 37°C. Isotype control antibody (blue line) was mouse IgG1 (1µg/1x10⁶ cells) used under the same conditions. Acquisition of >10, 000 events was performed.

MKRN2 Antibody - Background

E3 ubiquitin ligase catalyzing the covalent attachment of ubiquitin moieties onto substrate proteins.

MKRN2 Antibody - References

- Gray T.A.,et al.Genomics 77:119-126(2001).
- Zhang Q.-H.,et al.Genome Res. 10:1546-1560(2000).
- Ota T.,et al.Nat. Genet. 36:40-45(2004).
- Muzny D.M.,et al.Nature 440:1194-1198(2006).
- Mural R.J.,et al.Submitted (JUL-2005) to the EMBL/GenBank/DDBJ databases.