

**KIF1B Antibody**  
**Purified Mouse Monoclonal Antibody (Mab)**  
**Catalog # AM8480b****Specification**

---

**KIF1B Antibody - Product Information**

Application	WB,E
Primary Accession	<a href="#">O60333-3</a>
Reactivity	Human, Rat
Host	Mouse
Clonality	monoclonal
Isotype	IgG1,k

**KIF1B Antibody - Additional Information****Target/Specificity**

This KIF1B antibody is generated from a mouse immunized with a recombinant protein.

**Dilution**

WB~~1:2000

**Format**

Purified monoclonal antibody supplied in PBS with 0.09% (W/V) sodium azide. This antibody is purified through a protein G column, followed by dialysis against PBS.

**Storage**

Maintain refrigerated at 2-8°C for up to 2 weeks. For long term storage store at -20°C in small aliquots to prevent freeze-thaw cycles.

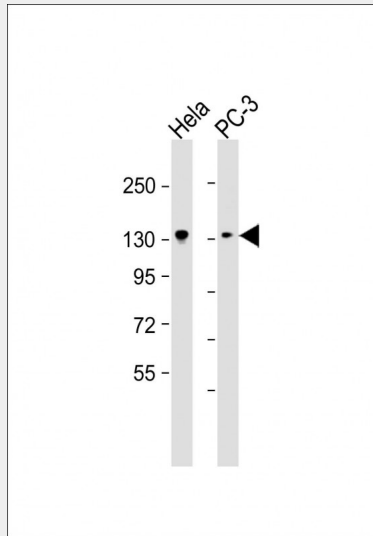
**Precautions**

KIF1B Antibody is for research use only and not for use in diagnostic or therapeutic procedures.

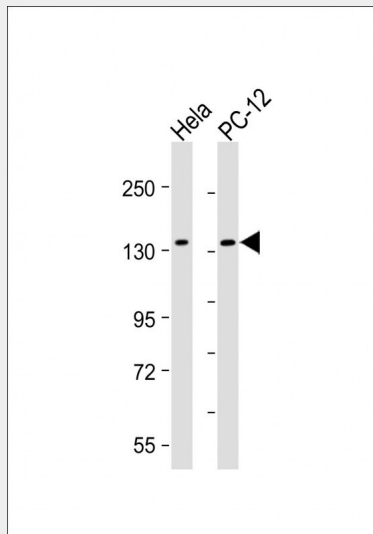
**KIF1B Antibody - Protein Information****KIF1B Antibody - Protocols**

Provided below are standard protocols that you may find useful for product applications.

- [Western Blot](#)
- [Blocking Peptides](#)
- [Dot Blot](#)
- [Immunohistochemistry](#)
- [Immunofluorescence](#)
- [Immunoprecipitation](#)
- [Flow Cytometry](#)
- [Cell Culture](#)

**KIF1B Antibody - Images**

All lanes : Anti-KIF1B Antibody at 1:2000 dilution Lane 1: HeLa whole cell lysate Lane 2: PC-3 whole cell lysate Lysates/proteins at 20  $\mu$ g per lane. Secondary Goat Anti-mouse IgG, (H+L), Peroxidase conjugated at 1/10000 dilution. Predicted band size : 130 kDa Blocking/Dilution buffer: 5% NFDm/TBST.



All lanes : Anti-KIF1B Antibody at 1:2000 dilution Lane 1: HeLa whole cell lysate Lane 2: PC-12 whole cell lysate Lysates/proteins at 20  $\mu$ g per lane. Secondary Goat Anti-mouse IgG, (H+L), Peroxidase conjugated at 1/10000 dilution. Predicted band size : 130 kDa Blocking/Dilution buffer: 5% NFDm/TBST.