

EEF1E1 Antibody
Purified Mouse Monoclonal Antibody (Mab)
Catalog # AM8472b**Specification**

EEF1E1 Antibody - Product Information

Application	IF, WB, FC,E
Primary Accession	O43324
Reactivity	Human, Mouse
Host	Mouse
Clonality	monoclonal
Isotype	IgG2b, κ
Calculated MW	19811

EEF1E1 Antibody - Additional Information**Gene ID** 9521**Other Names**

Eukaryotic translation elongation factor 1 epsilon-1, Aminoacyl tRNA synthetase complex-interacting multifunctional protein 3, Elongation factor p18, Multisynthase complex auxiliary component p18, EEF1E1, AIMP3, P18

Target/Specificity

This EEF1E1 antibody is generated from a mouse immunized with a recombinant protein of human EEF1E1.

Dilution

IF~~1:25
WB~~1:2000-1:4000
FC~~1:25

Format

Purified monoclonal antibody supplied in PBS with 0.09% (W/V) sodium azide. This antibody is purified through a protein G column, followed by dialysis against PBS.

Storage

Maintain refrigerated at 2-8°C for up to 2 weeks. For long term storage store at -20°C in small aliquots to prevent freeze-thaw cycles.

Precautions

EEF1E1 Antibody is for research use only and not for use in diagnostic or therapeutic procedures.

EEF1E1 Antibody - Protein Information**Name** EEF1E1**Synonyms** AIMP3, P18 {ECO:0000303|PubMed:15680327}

Function Positive modulator of ATM response to DNA damage.

Cellular Location

Cytoplasm. Cytoplasm, cytosol. Nucleus. Note=Cytoplasmic under growth arrest conditions. Translocated into the nucleus when growth resumes (S phase) and following DNA damage

Tissue Location

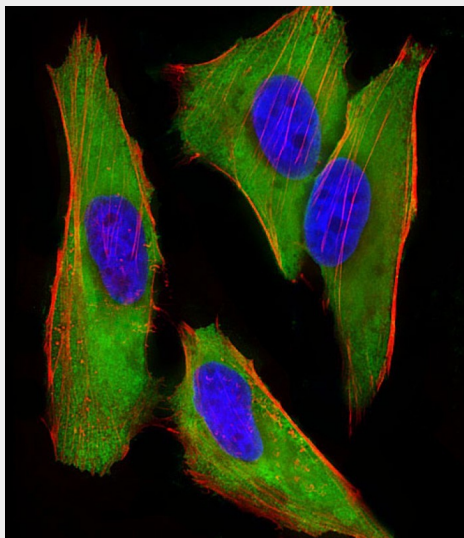
Down-regulated in various cancer tissues.

EEF1E1 Antibody - Protocols

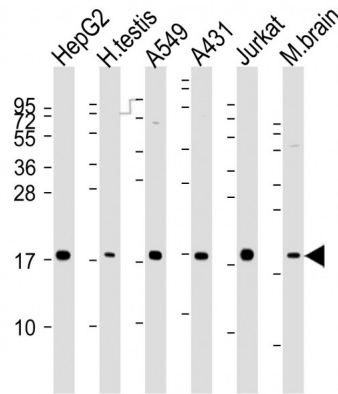
Provided below are standard protocols that you may find useful for product applications.

- [Western Blot](#)
- [Blocking Peptides](#)
- [Dot Blot](#)
- [Immunohistochemistry](#)
- [Immunofluorescence](#)
- [Immunoprecipitation](#)
- [Flow Cytometry](#)
- [Cell Culture](#)

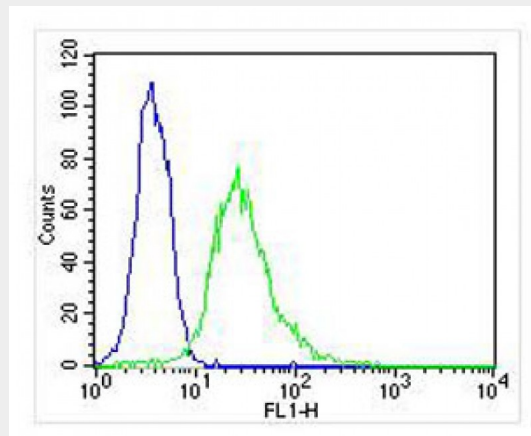
EEF1E1 Antibody - Images



Immunofluorescent analysis of 4% paraformaldehyde-fixed, 0.1% Triton X-100 permeabilized HeLa (human cervical epithelial adenocarcinoma cell line) cells labeling EEF1E1 with AM8472b at 1/25 dilution, followed by Dylight® 488-conjugated goat anti-mouse IgG (NA166821) secondary antibody at 1/200 dilution (green). Immunofluorescence image showing cytoplasm staining on HeLa cell line. Cytoplasmic actin is detected with Dylight® 554 Phalloidin (PD18466410) at 1/100 dilution (red).The nuclear counter stain is DAPI (blue).



All lanes : Anti-EEF1E1 Antibody at 1:2000-1:4000 dilution Lane 1: HepG2 whole cell lysates Lane 2: human testis lysates Lane 3: A549 whole cell lysates Lane 4: A431 whole cell lysates Lane 5: Jurkat whole cell lysates Lane 6: mouse brain lysates Lysates/proteins at 20 µg per lane. Secondary Goat Anti-mouse IgG, (H+L), Peroxidase conjugated at 1/10000 dilution Predicted band size : 20 kDa Blocking/Dilution buffer: 5% NFDM/TBST.



Overlay histogram showing HeLa cells stained with AM8472b (green line). The cells were fixed with 2% paraformaldehyde (10 min) and then permeabilized with 90% methanol for 10 min. The cells were then incubated in 2% bovine serum albumin to block non-specific protein-protein interactions followed by the antibody (AM8472b, 1:25 dilution) for 60 min at 37°C. The secondary antibody used was Goat-Anti-Mouse IgG, DyLight® 488 Conjugated Highly Cross-Adsorbed(NA168821)) at 1/400 dilution for 40 min at 37°C. Isotype control antibody (blue line) was mouse IgG2b (1µg/1x10⁶ cells) used under the same conditions. Acquisition of >10,000 events was performed.

EEF1E1 Antibody - Background

Positive modulator of ATM response to DNA damage.

EEF1E1 Antibody - References

- Motegi H.,et al.Submitted (FEB-1998) to the EMBL/GenBank/DDBJ databases.
- Mao M.,et al.Proc. Natl. Acad. Sci. U.S.A. 95:8175-8180(1998).
- Kalnine N.,et al.Submitted (MAY-2003) to the EMBL/GenBank/DDBJ databases.
- Mungall A.J.,et al.Nature 425:805-811(2003).

Bienvenut W.V.,et al.Submitted (DEC-2008) to UniProtKB.