

AURKA Antibody
Purified Mouse Monoclonal Antibody (Mab)
Catalog # AM8429b

Specification

AURKA Antibody - Product Information

Application	WB, IHC-P,E
Primary Accession	O14965
Reactivity	Human
Host	Mouse
Clonality	Monoclonal
Isotype	IgG1,k
Calculated MW	45823

AURKA Antibody - Additional Information

Gene ID 6790

Other Names

Aurora kinase A, Aurora 2, Aurora/IPL1-related kinase 1, ARK-1, Aurora-related kinase 1, hARK1, Breast tumor-amplified kinase, Serine/threonine-protein kinase 15, Serine/threonine-protein kinase 6, Serine/threonine-protein kinase aurora-A, AURKA

Target/Specificity

This AURKA antibody is generated from a mouse immunized with a KLH conjugated synthetic peptide between amino acids from the human region of human AURKA.

Dilution

WB~~1:1000

IHC-P~~1:25

Format

Purified monoclonal antibody supplied in PBS with 0.09% (W/V) sodium azide. This antibody is purified through a protein G column, followed by dialysis against PBS.

Storage

Maintain refrigerated at 2-8°C for up to 2 weeks. For long term storage store at -20°C in small aliquots to prevent freeze-thaw cycles.

Precautions

AURKA Antibody is for research use only and not for use in diagnostic or therapeutic procedures.

AURKA Antibody - Protein Information

Name AURKA ([HGNC:11393](#))

Function Mitotic serine/threonine kinase that contributes to the regulation of cell cycle progression (PubMed:[11039908](#), PubMed:[12390251](#), PubMed:[17125279](#), PubMed:[17360485](#),

PubMed:[18615013](#), PubMed:[26246606](#)). Associates with the centrosome and the spindle microtubules during mitosis and plays a critical role in various mitotic events including the establishment of mitotic spindle, centrosome duplication, centrosome separation as well as maturation, chromosomal alignment, spindle assembly checkpoint, and cytokinesis (PubMed:[14523000](#), PubMed:[26246606](#)). Required for normal spindle positioning during mitosis and for the localization of NUMA1 and DCTN1 to the cell cortex during metaphase (PubMed:[27335426](#)). Required for initial activation of CDK1 at centrosomes (PubMed:[13678582](#), PubMed:[15128871](#)). Phosphorylates numerous target proteins, including ARHGEF2, BORA, BRCA1, CDC25B, DLGP5, HDAC6, KIF2A, LATS2, NDEL1, PARD3, PPP1R2, PLK1, RASSF1, TACC3, p53/TP53 and TPX2 (PubMed:[11551964](#), PubMed:[14702041](#), PubMed:[15128871](#), PubMed:[15147269](#), PubMed:[15987997](#), PubMed:[17604723](#), PubMed:[18056443](#), PubMed:[18615013](#)). Regulates KIF2A tubulin depolymerase activity (PubMed:[19351716](#)). Important for microtubule formation and/or stabilization (PubMed:[18056443](#)). Required for normal axon formation (PubMed:[19812038](#)). Plays a role in microtubule remodeling during neurite extension (PubMed:[19668197](#)). Also acts as a key regulatory component of the p53/TP53 pathway, and particularly the checkpoint- response pathways critical for oncogenic transformation of cells, by phosphorylating and destabilizing p53/TP53 (PubMed:[14702041](#)). Phosphorylates its own inhibitors, the protein phosphatase type 1 (PP1) isoforms, to inhibit their activity (PubMed:[11551964](#)). Inhibits cilia outgrowth (By similarity). Required for cilia disassembly via phosphorylation of HDAC6 and subsequent deacetylation of alpha-tubulin (PubMed:[17604723](#), PubMed:[20643351](#)). Regulates protein levels of the anti-apoptosis protein BIRC5 by suppressing the expression of the SCF(FBXL7) E3 ubiquitin-protein ligase substrate adapter FBXL7 through the phosphorylation of the transcription factor FOXP1 (PubMed:[28218735](#)).

Cellular Location

Cytoplasm, cytoskeleton, microtubule organizing center, centrosome. Cytoplasm, cytoskeleton, spindle pole. Cytoplasm, cytoskeleton, microtubule organizing center, centrosome, centriole {ECO:0000250|UniProtKB:P97477}. Cell projection, neuron projection {ECO:0000250|UniProtKB:P97477}. Cell projection, cilium. Cytoplasm, cytoskeleton, cilium basal body. Basolateral cell membrane {ECO:0000250|UniProtKB:F1PNY0}. Note=Detected at the neurite hillock in developing neurons (By similarity). Localizes at the centrosome in mitotic cells from early prophase until telophase, but also localizes to the spindle pole MTs from prophase to anaphase (PubMed:17229885, PubMed:21225229, PubMed:9606188). Colocalized with SIRT2 at centrosome (PubMed:22014574). Moves to the midbody during both telophase and cytokinesis (PubMed:17726514). Associates with both the pericentriolar material (PCM) and centrioles (PubMed:22014574). The localization to the spindle poles is regulated by AAAS (PubMed:26246606) {ECO:0000250|UniProtKB:P97477, ECO:0000269|PubMed:17229885, ECO:0000269|PubMed:17726514, ECO:0000269|PubMed:21225229, ECO:0000269|PubMed:22014574, ECO:0000269|PubMed:26246606, ECO:0000269|PubMed:9606188}

Tissue Location

Highly expressed in testis and weakly in skeletal muscle, thymus and spleen. Also highly expressed in colon, ovarian, prostate, neuroblastoma, breast and cervical cancer cell lines

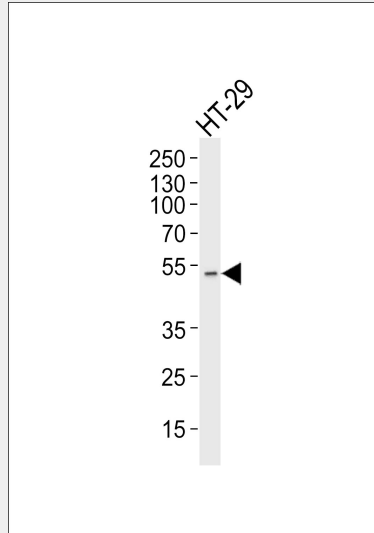
AURKA Antibody - Protocols

Provided below are standard protocols that you may find useful for product applications.

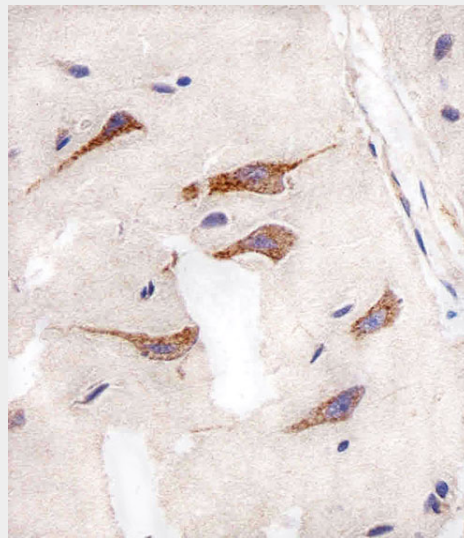
- [Western Blot](#)
- [Blocking Peptides](#)
- [Dot Blot](#)
- [Immunohistochemistry](#)
- [Immunofluorescence](#)
- [Immunoprecipitation](#)

- [Flow Cytometry](#)
- [Cell Culture](#)

AURKA Antibody - Images



Western blot analysis of lysate from HT-29 cell line, using AURKA Antibody (Cat. #AM8429b). AM8429b was diluted at 1:1000. A goat anti-mouse IgG H&L (HRP) at 1:3000 dilution was used as the secondary antibody. Lysate at 35µg.



Immunohistochemical analysis of paraffin-embedded H. brain section using AURKA Antibody (Cat#AM8429b). AM8429b was diluted at 1:25 dilution. A peroxidase-conjugated goat anti-mouse IgG at 1:400 dilution was used as the secondary antibody, followed by DAB staining.

AURKA Antibody - Background

Mitotic serine/threonine kinases that contributes to the regulation of cell cycle progression. Associates with the centrosome and the spindle microtubules during mitosis and plays a critical role in various mitotic events including the establishment of mitotic spindle, centrosome duplication, centrosome separation as well as maturation, chromosomal alignment, spindle assembly checkpoint, and cytokinesis. Required for initial activation of CDK1 at centrosomes. Phosphorylates numerous target proteins, including ARHGEF2, BORA, BRCA1, CDC25B, DLGP5, HDAC6, KIF2A, LATS2, NDEL1, PARD3, PPP1R2, PLK1, RASSF1, TACC3, p53/TP53 and TPX2. Regulates KIF2A tubulin

depolymerase activity. Required for normal axon formation. Plays a role in microtubule remodeling during neurite extension. Important for microtubule formation and/or stabilization. Also acts as a key regulatory component of the p53/TP53 pathway, and particularly the checkpoint-response pathways critical for oncogenic transformation of cells, by phosphorylating and stabilizing p53/TP53. Phosphorylates its own inhibitors, the protein phosphatase type 1 (PP1) isoforms, to inhibit their activity. Necessary for proper cilia disassembly prior to mitosis.

AURKA Antibody - References

- Kimura M.,et al.J. Biol. Chem. 272:13766-13771(1997).
Shindo M.,et al.Biochem. Biophys. Res. Commun. 244:285-292(1998).
Zhou H.,et al.Nat. Genet. 20:189-193(1998).
Wang L.,et al.Submitted (OCT-1999) to the EMBL/GenBank/DDBJ databases.
Deloukas P.,et al.Nature 414:865-871(2001).