

**YWHAZ Antibody**  
**Purified Mouse Monoclonal Antibody (Mab)**  
**Catalog # AM2256a**

**Specification**

---

**YWHAZ Antibody - Product Information**

Application	IF, WB,E
Primary Accession	<a href="#">P63104</a>
Other Accession	<a href="#">P63102</a> , <a href="#">P63101</a> , <a href="#">P63103</a> , <a href="#">P29361</a>
Reactivity	Human, Mouse, Rat
Predicted	Bovine, Sheep
Host	Mouse
Clonality	Monoclonal
Isotype	IgG2b, $\kappa$

**YWHAZ Antibody - Additional Information**

**Gene ID** 7534

**Other Names**

14-3-3 protein zeta/delta, Protein kinase C inhibitor protein 1, KCIP-1, YWHAZ

**Target/Specificity**

This YWHAZ antibody is generated from a mouse immunized with a recombinant protein from human YWHAZ.

**Dilution**

IF~~1:25

WB~~1:1000

**Format**

Purified monoclonal antibody supplied in PBS with 0.09% (W/V) sodium azide. This antibody is purified through a protein G column, followed by dialysis against PBS.

**Storage**

Maintain refrigerated at 2-8°C for up to 2 weeks. For long term storage store at -20°C in small aliquots to prevent freeze-thaw cycles.

**Precautions**

YWHAZ Antibody is for research use only and not for use in diagnostic or therapeutic procedures.

**YWHAZ Antibody - Protein Information**

**Name** YWHAZ

**Function** Adapter protein implicated in the regulation of a large spectrum of both general and specialized signaling pathways (PubMed:[14578935](#), PubMed:[15071501](#), PubMed:[15644438](#), PubMed:[16376338](#), PubMed:[16959763](#), PubMed:[31024343](#), PubMed:[9360956](#)). Binds to a large

number of partners, usually by recognition of a phosphoserine or phosphothreonine motif (PubMed:[35662396](#)). Binding generally results in the modulation of the activity of the binding partner (PubMed:[35662396](#)). Promotes cytosolic retention and inactivation of TFEB transcription factor by binding to phosphorylated TFEB (PubMed:[35662396](#)). Induces ARHGEF7 activity on RAC1 as well as lamellipodia and membrane ruffle formation (PubMed:[16959763](#)). In neurons, regulates spine maturation through the modulation of ARHGEF7 activity (By similarity).

#### Cellular Location

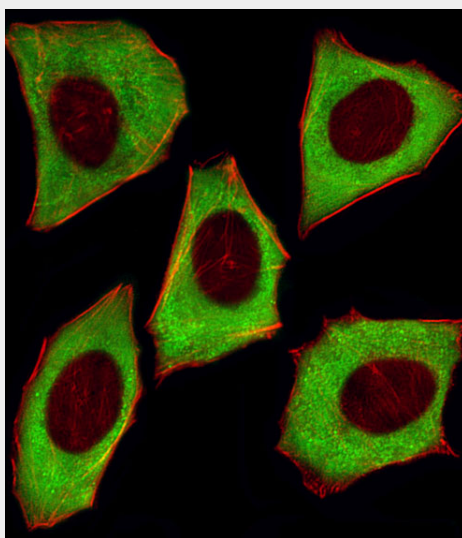
Cytoplasm. Melanosome. Note=Located to stage I to stage IV melanosomes.

#### YWHAZ Antibody - Protocols

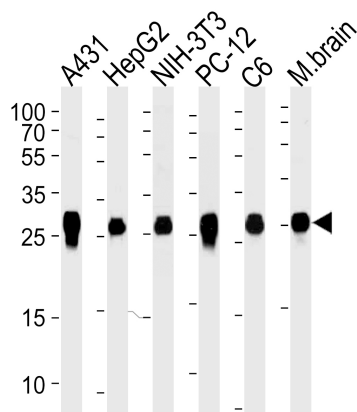
Provided below are standard protocols that you may find useful for product applications.

- [Western Blot](#)
- [Blocking Peptides](#)
- [Dot Blot](#)
- [Immunohistochemistry](#)
- [Immunofluorescence](#)
- [Immunoprecipitation](#)
- [Flow Cytometry](#)
- [Cell Culture](#)

#### YWHAZ Antibody - Images



Fluorescent image of U251 cells stained with YWHAZ Antibody (Cat#AM2256a). AM2256a was diluted at 1:25 dilution. An Alexa Fluor® 488-conjugated goat anti-mouse IgG at 1:400 dilution was used as the secondary antibody (green). Cytoplasmic actin was counterstained with Alexa Fluor® 555 conjugated with Phalloidin (red).



Western blot analysis of lysates from A431, HepG2, mouse NIH/3T3, rat PC-12 and C6 cell line, mouse brain tissue (from left to right), using YWHAZ Antibody (Cat. #AM2256a). AM2256a was diluted at 1:1000 at each lane. A goat anti-mouse IgG H&L(HRP) at 1:5000 dilution was used as the secondary antibody. Lysates at 35µg per lane.

#### **YWHAZ Antibody - Background**

Adapter protein implicated in the regulation of a large spectrum of both general and specialized signaling pathways. Binds to a large number of partners, usually by recognition of a phosphoserine or phosphothreonine motif. Binding generally results in the modulation of the activity of the binding partner.

#### **YWHAZ Antibody - References**

- Zupan L.A.,et al.J. Biol. Chem. 267:8707-8710(1992).
- Seluja G.A.,et al.Biochim. Biophys. Acta 1395:281-287(1998).
- Ota T.,et al.Nat. Genet. 36:40-45(2004).
- Mural R.J.,et al.Submitted (JUL-2005) to the EMBL/GenBank/DDBJ databases.
- Gevaert K.,et al.Nat. Biotechnol. 21:566-569(2003).