

**POU2AF1 Antibody**  
**Mouse Monoclonal Antibody (Mab)**  
**Catalog # AM2243b**

**Specification**

---

**POU2AF1 Antibody - Product Information**

Application	WB,E
Primary Accession	<a href="#">O16633</a>
Reactivity	Human
Host	Mouse
Clonality	Monoclonal
Isotype	IgG1, $\kappa$
Calculated MW	27436

**POU2AF1 Antibody - Additional Information**

**Gene ID** 5450

**Other Names**

POU domain class 2-associating factor 1, B-cell-specific coactivator OBF-1, BOB-1, OCA-B, OCT-binding factor 1, POU2AF1, OBF1

**Target/Specificity**

Purified His-tagged POU2AF1 protein was used to produced this monoclonal antibody.

**Dilution**

WB~~1:4000

**Format**

Purified monoclonal antibody supplied in PBS with 0.09% (W/V) sodium azide. This antibody is purified through a protein G column, followed by dialysis against PBS.

**Storage**

Maintain refrigerated at 2-8°C for up to 2 weeks. For long term storage store at -20°C in small aliquots to prevent freeze-thaw cycles.

**Precautions**

POU2AF1 Antibody is for research use only and not for use in diagnostic or therapeutic procedures.

**POU2AF1 Antibody - Protein Information**

**Name** POU2AF1 ([HGNC:9211](#))

**Function** Transcriptional coactivator that specifically associates with either POU2F1/OCT1 or POU2F2/OCT2 (PubMed:[7859290](#)). It boosts the POU2F1/OCT1 mediated promoter activity and to a lesser extent, that of POU2F2/OCT2 (PubMed:[7779176](#)). It recognizes the POU domains of POU2F1/OCT1 and POU2F2/OCT2 (PubMed:[7779176](#)). It is essential for the response of B-cells to antigens and required for the formation of germinal centers (PubMed:[7623806](#), PubMed:[7859290](#)).

Regulates IL6 expression in B cells as POU2F2/OCT2 coactivator (By similarity).

#### Cellular Location

Nucleus.

#### Tissue Location

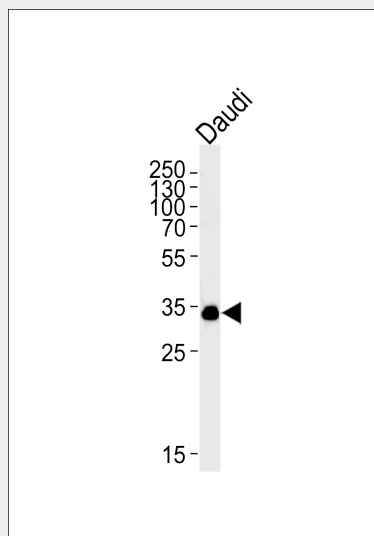
B-cell specific (PubMed:7779176, PubMed:7859290). Detected in mainly in spleen, but also in thymus, peripheral blood leukocyte and small intestine (PubMed:7779176, PubMed:7859290)

### POU2AF1 Antibody - Protocols

Provided below are standard protocols that you may find useful for product applications.

- [Western Blot](#)
- [Blocking Peptides](#)
- [Dot Blot](#)
- [Immunohistochemistry](#)
- [Immunofluorescence](#)
- [Immunoprecipitation](#)
- [Flow Cytometry](#)
- [Cell Culture](#)

### POU2AF1 Antibody - Images



POU2AF1 Antibody (Cat. #AM2243b) western blot analysis in Daudi cell line lysates (35µg/lane). This demonstrates the POU2AF1 antibody detected the POU2AF1 protein (arrow).

### POU2AF1 Antibody - Background

Transcriptional coactivator that specifically associates with either OCT1 or OCT2. It boosts the OCT1 mediated promoter activity and to a lesser extent, that of OCT2. It has no intrinsic DNA-binding activity. It recognizes the POU domains of OCT1 and OCT2. It is essential for the response of B-cells to antigens and required for the formation of germinal centers.

### POU2AF1 Antibody - References

Strubin M., et al. Cell 80:497-506(1995).

Gstaiger M., et al. Nature 373:360-362(1995).

Galiegue-Zouitina S., et al. C. R. Acad. Sci. III, Sci. Vie 318:1125-1131(1995).

Luo Y., et al. Mol. Cell. Biol. 15:4115-4124(1995).

Ota T., et al. Nat. Genet. 36:40-45(2004).