

**NRAS Antibody (N-term)**  
**Mouse Monoclonal Antibody (Mab)**  
**Catalog # AM2238b**

**Specification**

---

**NRAS Antibody (N-term) - Product Information**

Application	WB,E
Primary Accession	<a href="#">P01111</a>
Other Accession	<a href="#">Q04970</a> , <a href="#">Q2MJK3</a> , <a href="#">P08556</a> , <a href="#">Q5F352</a>
Reactivity	Human, Rat
Predicted	Chicken, Mouse, Pig
Host	Mouse
Clonality	Monoclonal
Isotype	IgG1
Calculated MW	21229
Antigen Region	70-101

**NRAS Antibody (N-term) - Additional Information**

**Gene ID** 4893

**Other Names**

GTPase NRas, Transforming protein N-Ras, NRAS, HRAS1

**Target/Specificity**

This NRAS antibody is generated from mice immunized with a KLH conjugated synthetic peptide between 70-101 amino acids from the N-terminal region of human NRAS.

**Dilution**

WB~~1:1000

**Format**

Purified monoclonal antibody supplied in PBS with 0.09% (W/V) sodium azide. This antibody is purified through a protein G column, followed by dialysis against PBS.

**Storage**

Maintain refrigerated at 2-8°C for up to 2 weeks. For long term storage store at -20°C in small aliquots to prevent freeze-thaw cycles.

**Precautions**

NRAS Antibody (N-term) is for research use only and not for use in diagnostic or therapeutic procedures.

**NRAS Antibody (N-term) - Protein Information**

**Name** NRAS

**Synonyms** HRAS1

**Function** Ras proteins bind GDP/GTP and possess intrinsic GTPase activity.

#### **Cellular Location**

Cell membrane; Lipid-anchor; Cytoplasmic side. Golgi apparatus membrane; Lipid-anchor

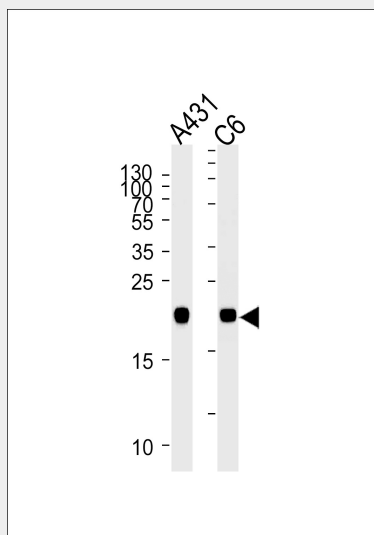
Note=Shuttles between the plasma membrane and the Golgi apparatus

#### **NRAS Antibody (N-term) - Protocols**

Provided below are standard protocols that you may find useful for product applications.

- [Western Blot](#)
- [Blocking Peptides](#)
- [Dot Blot](#)
- [Immunohistochemistry](#)
- [Immunofluorescence](#)
- [Immunoprecipitation](#)
- [Flow Cytometry](#)
- [Cell Culture](#)

#### **NRAS Antibody (N-term) - Images**



NRAS Antibody (N-term) (Cat. #AM2238b) western blot analysis in A431 and rat C6 cell line lysates (35µg/lane). This demonstrates the NRAS antibody detected the NRAS protein (arrow).

#### **NRAS Antibody (N-term) - Background**

Ras proteins bind GDP/GTP and possess intrinsic GTPase activity.

#### **NRAS Antibody (N-term) - References**

Hall A. et al. Nucleic Acids Res. 13:5255-5268(1985).