

**CDX1 Antibody (C-term)**  
**Mouse Monoclonal Antibody (Mab)**  
**Catalog # AM2194b****Specification**

---

**CDX1 Antibody (C-term) - Product Information**

Application	<b>WB,E</b>
Primary Accession	<a href="#">P47902</a>
Reactivity	<b>Human, Mouse</b>
Host	<b>Mouse</b>
Clonality	<b>Monoclonal</b>
Isotype	<b>IgG1</b>
Calculated MW	<b>28138</b>

**CDX1 Antibody (C-term) - Additional Information****Gene ID** 1044**Other Names**

Homeobox protein CDX-1, Caudal-type homeobox protein 1, CDX1

**Target/Specificity**

Purified His-tagged CDX1 protein was used to produced this monoclonal antibody.

**Dilution**

WB~~1:1000-1:2000

**Format**

Purified monoclonal antibody supplied in PBS with 0.09% (W/V) sodium azide. This antibody is purified through a protein G column, followed by dialysis against PBS.

**Storage**

Maintain refrigerated at 2-8°C for up to 2 weeks. For long term storage store at -20°C in small aliquots to prevent freeze-thaw cycles.

**Precautions**

CDX1 Antibody (C-term) is for research use only and not for use in diagnostic or therapeutic procedures.

**CDX1 Antibody (C-term) - Protein Information****Name** CDX1**Function** Plays a role in transcriptional regulation (PubMed:[24623306](#)). Involved in activated KRAS-mediated transcriptional activation of PRKD1 in colorectal cancer (CRC) cells (PubMed:[24623306](#)). Binds to the PRKD1 promoter in colorectal cancer (CRC) cells (PubMed:[24623306](#)). Could play a role in the terminal differentiation of the intestine. Binds preferentially to methylated DNA (PubMed:[28473536](#)).

**Cellular Location**

Nucleus.

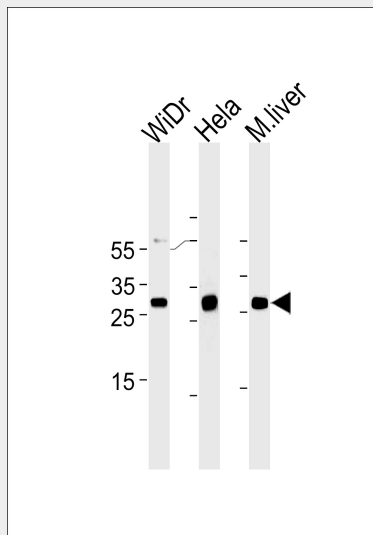
**Tissue Location**

Intestinal epithelium.

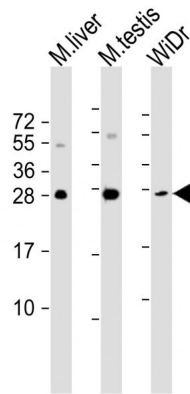
**CDX1 Antibody (C-term) - Protocols**

Provided below are standard protocols that you may find useful for product applications.

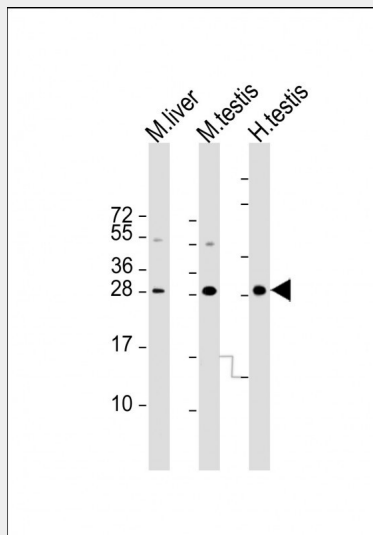
- [Western Blot](#)
- [Blocking Peptides](#)
- [Dot Blot](#)
- [Immunohistochemistry](#)
- [Immunofluorescence](#)
- [Immunoprecipitation](#)
- [Flow Cytometry](#)
- [Cell Culture](#)

**CDX1 Antibody (C-term) - Images**

CDX1 Antibody (C-term) (Cat. #AM2194b) western blot analysis in WiDr, HeLa cell line and mouse liver tissue lysates (35µg/lane). This demonstrates the CDX1 antibody detected the CDX1 protein (arrow).



All lanes : Anti-CDX1 Antibody (C-term) at 1:1000-1:2000 dilution Lane 1: mouse liver lysate Lane 2: mouse testis lysate Lane 3: WiDr whole cell lysate Lysates/proteins at 20 µg per lane. Secondary Goat Anti-mouse IgG, (H+L), Peroxidase conjugated at 1/10000 dilution. Predicted band size : 28 kDa Blocking/Dilution buffer: 5% NFDM/TBST.



All lanes : Anti-CDX1 (C-term) at 1:1000-1:2000 dilution Lane 1: mouse liver lysate Lane 2: mouse testis lysate Lane 3: human testis lysate Lysates/proteins at 20 µg per lane. Secondary Goat Anti-mouse IgG, (H+L), Peroxidase conjugated at 1/10000 dilution. Predicted band size : 28 kDa Blocking/Dilution buffer: 5% NFDM/TBST.

### CDX1 Antibody (C-term) - Background

Could play a role in the terminal differentiation of the intestine.

### CDX1 Antibody (C-term) - References

- Bonner C.A., et al. Genomics 28:206-211(1995).
- Mallo G.V., et al. Int. J. Cancer 74:35-44(1997).
- Malakooti J., et al. Submitted (FEB-2000) to the EMBL/GenBank/DDBJ databases.