

SPARC Antibody(C-term) Antibody(Ascites)
Mouse Monoclonal Antibody (Mab)
Catalog # AM2175a**Specification**

SPARC Antibody(C-term) Antibody(Ascites) - Product Information

Application	WB,E
Primary Accession	P09486
Other Accession	P36378 , P16975 , P36233 , P20112 , P07214 , P36377 , P13213 , NP_003109
Reactivity	Human
Predicted	Bovine, Chicken, Mouse, Pig, Rabbit, Rat, Xenopus
Host	Mouse
Clonality	Monoclonal
Isotype	IgG1
Calculated MW	34632
Antigen Region	224-251

SPARC Antibody(C-term) Antibody(Ascites) - Additional Information**Gene ID** 6678**Other Names**

SPARC, Basement-membrane protein 40, BM-40, Osteonectin, ON, Secreted protein acidic and rich in cysteine, SPARC, ON

Target/Specificity

This SPARC antibody is generated from mice immunized with a KLH conjugated synthetic peptide between 224-251 amino acids from the C-terminal region of human SPARC.

Dilution

WB~~1:500~1000

Format

Mouse monoclonal antibody supplied in crude ascites with 0.09% (W/V) sodium azide.

Storage

Maintain refrigerated at 2-8°C for up to 2 weeks. For long term storage store at -20°C in small aliquots to prevent freeze-thaw cycles.

Precautions

SPARC Antibody(C-term) Antibody(Ascites) is for research use only and not for use in diagnostic or therapeutic procedures.

SPARC Antibody(C-term) Antibody(Ascites) - Protein Information**Name** SPARC

Synonyms ON

Function Appears to regulate cell growth through interactions with the extracellular matrix and cytokines. Binds calcium and copper, several types of collagen, albumin, thrombospondin, PDGF and cell membranes. There are two calcium binding sites; an acidic domain that binds 5 to 8 Ca(2+) with a low affinity and an EF-hand loop that binds a Ca(2+) ion with a high affinity.

Cellular Location

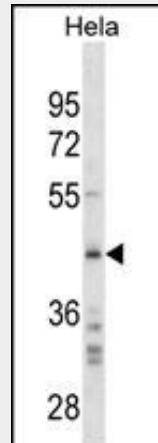
Secreted, extracellular space, extracellular matrix, basement membrane. Note=In or around the basement membrane

SPARC Antibody(C-term) Antibody(Ascites) - Protocols

Provided below are standard protocols that you may find useful for product applications.

- [Western Blot](#)
- [Blocking Peptides](#)
- [Dot Blot](#)
- [Immunohistochemistry](#)
- [Immunofluorescence](#)
- [Immunoprecipitation](#)
- [Flow Cytometry](#)
- [Cell Culture](#)

SPARC Antibody(C-term) Antibody(Ascites) - Images



SPARC Antibody (C-term)(Ascites)(Cat. #AM2175a) western blot analysis in HeLa cell line lysates (35µg/lane). This demonstrates the SPARC antibody detected the SPARC protein (arrow).

SPARC Antibody(C-term) Antibody(Ascites) - Background

Secreted protein acidic and rich in cysteine/osteonectin/BM40, or SPARC, is a matrix-associated protein that elicits changes in cell shape, inhibits cell-cycle progression, and influences the synthesis of extracellular matrix (ECM) (Bradshaw et al., 2003 [PubMed 12721366]).

SPARC Antibody(C-term) Antibody(Ascites) - References

Romero, R., et al. Am. J. Obstet. Gynecol. 203 (4), 361 (2010) :

Bailey, S.D., et al. Diabetes Care 33(10):2250-2253(2010)
Howard, C., et al. Histol. Histopathol. 25(9):1163-1169(2010)
Johnatty, S.E., et al. PLoS Genet. 6 (7), E1001016 (2010) :
Liang, J.F., et al. J. Exp. Clin. Cancer Res. 29, 71 (2010) :