

CREB1 Antibody
Purified Mouse Monoclonal Antibody (Mab)
Catalog # AM2163b

Specification

CREB1 Antibody - Product Information

| | |
|-------------------|------------------------|
| Application | IHC, WB,E |
| Primary Accession | P16220 |
| Reactivity | Human, Mouse, Rat |
| Host | Mouse |
| Clonality | Monoclonal |
| Isotype | IgG1, κ |
| Calculated MW | 35136 |
| Antigen Region | 1-297 |

CREB1 Antibody - Additional Information

Gene ID 1385

Other Names

Cyclic AMP-responsive element-binding protein 1, CREB-1, cAMP-responsive element-binding protein 1, CREB1

Target/Specificity

This CREB1 antibody is generated from a mouse immunized with a recombinant protein from human CREB1.

Dilution

IHC~~1:500

WB~~1:1000

Format

Purified monoclonal antibody supplied in PBS with 0.09% (W/V) sodium azide. This antibody is purified through a protein G column, followed by dialysis against PBS.

Storage

Maintain refrigerated at 2-8°C for up to 2 weeks. For long term storage store at -20°C in small aliquots to prevent freeze-thaw cycles.

Precautions

CREB1 Antibody is for research use only and not for use in diagnostic or therapeutic procedures.

CREB1 Antibody - Protein Information

Name CREB1

Function Phosphorylation-dependent transcription factor that stimulates transcription upon binding to the DNA cAMP response element (CRE), a sequence present in many viral and cellular

promoters (By similarity). Transcription activation is enhanced by the TORC coactivators which act independently of Ser-119 phosphorylation (PubMed:[14536081](#)). Involved in different cellular processes including the synchronization of circadian rhythmicity and the differentiation of adipose cells (By similarity). Regulates the expression of apoptotic and inflammatory response factors in cardiomyocytes in response to ERFE-mediated activation of AKT signaling (By similarity).

Cellular Location

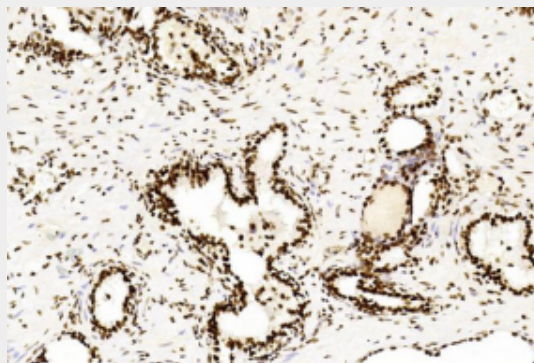
Nucleus {ECO:0000255|PROSITE-ProRule:PRU00312, ECO:0000255|PROSITE-ProRule:PRU00978, ECO:0000269|PubMed:12552083}

CREB1 Antibody - Protocols

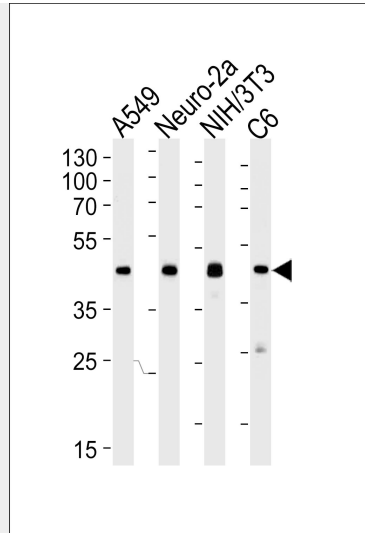
Provided below are standard protocols that you may find useful for product applications.

- [Western Blot](#)
- [Blocking Peptides](#)
- [Dot Blot](#)
- [Immunohistochemistry](#)
- [Immunofluorescence](#)
- [Immunoprecipitation](#)
- [Flow Cytometry](#)
- [Cell Culture](#)

CREB1 Antibody - Images



Immunohistochemical analysis of paraffin-embedded Human Prostate cancer section using Pink1(Cat#AM2163B). AM2163B was diluted at 1:500 dilution. A undiluted biotinylated goat polyvalent antibody was used as the secondary, followed by DAB staining.



Western blot analysis of lysates from A549, mouse Neuro-2a, mouse NIH/3T3, rat C6 cell line (from left to right) using CREB1 Antibody (Cat. # AM2163b). AM2163b was diluted at 1:1000 at each lane. A goat anti-mouse IgG H&L(HRP) at 1:3000 dilution was used as the secondary antibody. Lysates at 35µg per lane.

CREB1 Antibody - Background

Phosphorylation-dependent transcription factor that stimulates transcription upon binding to the DNA cAMP response element (CRE), a sequence present in many viral and cellular promoters. Transcription activation is enhanced by the TORC coactivators which act independently of Ser-133 phosphorylation. Involved in different cellular processes including the synchronization of circadian rhythmicity and the differentiation of adipose cells.

CREB1 Antibody - References

- Berkowitz L.A., et al. Proc. Natl. Acad. Sci. U.S.A. 87:5258-5262(1990).
- Yoshimura T., et al. EMBO J. 9:2537-2542(1990).
- Waeber G., et al. Trans. Assoc. Am. Physicians 103:28-37(1990).
- Hoeffler J.P., et al. Science 242:1430-1433(1988).
- Short M.L., et al. Nucleic Acids Res. 19:4290-4290(1991).