

CD3 Antibody
Mouse Monoclonal Antibody (Mab)
Catalog # AM2153b

Specification

CD3 Antibody - Product Information

Application	FC,E
Primary Accession	P07766
Other Accession	P09693 , P20963
Reactivity	Human
Host	Mouse
Clonality	Monoclonal
Isotype	IgG2a
Calculated MW	23147

CD3 Antibody - Additional Information

Gene ID 916

Other Names

T-cell surface glycoprotein CD3 epsilon chain, T-cell surface antigen T3/Leu-4 epsilon chain, CD3e, CD3E, T3E

Target/Specificity

This CD3 antibody is generated from mouse immunized with human CD3.

Dilution

FC~~1:50

Format

Purified monoclonal antibody supplied in PBS with 0.09% (W/V) sodium azide. This antibody is purified through a protein G column, followed by dialysis against PBS.

Storage

Maintain refrigerated at 2-8°C for up to 2 weeks. For long term storage store at -20°C in small aliquots to prevent freeze-thaw cycles.

Precautions

CD3 Antibody is for research use only and not for use in diagnostic or therapeutic procedures.

CD3 Antibody - Protein Information

Name CD3E

Synonyms T3E

Function Part of the TCR-CD3 complex present on T-lymphocyte cell surface that plays an essential role in adaptive immune response. When antigen presenting cells (APCs) activate T-cell

receptor (TCR), TCR- mediated signals are transmitted across the cell membrane by the CD3 chains CD3D, CD3E, CD3G and CD3Z. All CD3 chains contain immunoreceptor tyrosine-based activation motifs (ITAMs) in their cytoplasmic domain. Upon TCR engagement, these motifs become phosphorylated by Src family protein tyrosine kinases LCK and FYN, resulting in the activation of downstream signaling pathways (PubMed:[2470098](#)). In addition of this role of signal transduction in T-cell activation, CD3E plays an essential role in correct T-cell development. Initiates the TCR-CD3 complex assembly by forming the two heterodimers CD3D/CD3E and CD3G/CD3E. Participates also in internalization and cell surface down- regulation of TCR-CD3 complexes via endocytosis sequences present in CD3E cytosolic region (PubMed:[10384095](#), PubMed:[26507128](#)). In addition to its role as a TCR coreceptor, it serves as a receptor for ITPRIPL1. Ligand recognition inhibits T-cell activation by promoting interaction with NCK1, which prevents CD3E-ZAP70 interaction and blocks the ERK- NFkB signaling cascade and calcium influx (PubMed:[38614099](#)).

Cellular Location

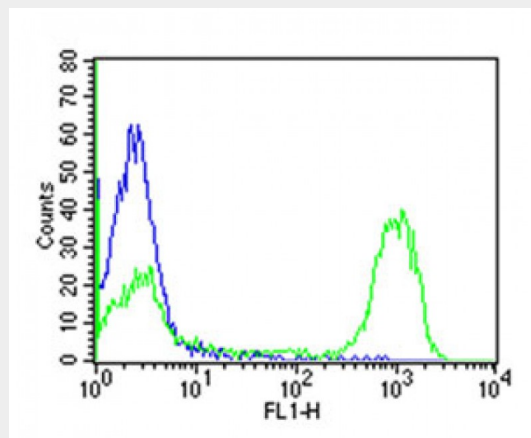
Cell membrane; Single-pass type I membrane protein

CD3 Antibody - Protocols

Provided below are standard protocols that you may find useful for product applications.

- [Western Blot](#)
- [Blocking Peptides](#)
- [Dot Blot](#)
- [Immunohistochemistry](#)
- [Immunofluorescence](#)
- [Immunoprecipitation](#)
- [Flow Cytometry](#)
- [Cell Culture](#)

CD3 Antibody - Images



Overlay histogram showing human peripheral blood lymphocytes stained with CD3 antibody (green line). The cells were incubated in 2% bovine serum albumin to block non-specific protein-protein interactions followed by the antibody (1:50 dilution) for 60min at 37°C. The secondary antibody used was Goat Anti-Mouse IgG, DyLight® 488 Conjugated Highly Cross-Adsorbed (OJ192088) at 1/200 dilution for 40min at 37°C. Isotype control antibody (blue line) was mouse IgG2a (1µg/1x10⁶ cells) used under the same conditions. Acquisition of >10,000 events was performed.

CD3 Antibody - Background

The CD3 complex mediates signal transduction.

CD3 Antibody - Citations

- [Human CIK Cells Loaded with Au Nanorods as a Theranostic Platform for Targeted Photoacoustic Imaging and Enhanced Immunotherapy and Photothermal Therapy.](#)