

**Rat Plp1 Antibody (Center)**  
**Mouse Monoclonal Antibody (Mab)**  
**Catalog # AM2143b****Specification**

---

**Rat Plp1 Antibody (Center) - Product Information**

Application	WB,E
Primary Accession	<a href="#">P60203</a>
Other Accession	<a href="#">P47789</a> , <a href="#">Q712P7</a> , <a href="#">P60202</a> , <a href="#">Q8HXW7</a> , <a href="#">P60201</a> , <a href="#">P23289</a> , <a href="#">P04116</a> , <a href="#">NP_112252.1</a>
Reactivity	Human
Predicted	Bovine, Chicken, Monkey, Mouse, Pig, Rabbit
Host	Mouse
Clonality	Monoclonal
Isotype	IgM
Calculated MW	30077
Antigen Region	248-277

**Rat Plp1 Antibody (Center) - Additional Information****Gene ID** 24943**Other Names**

Myelin proteolipid protein, PLP, Lipophilin, Plp1, Plp

**Target/Specificity**

This Rat Plp1 antibody is generated from mice immunized with a KLH conjugated synthetic peptide between 248-277 amino acids from the Central region of rat Plp1.

**Dilution**

WB~~1:1000

**Format**

Purified monoclonal antibody supplied in PBS with 0.09% (W/V) sodium azide. This antibody is prepared by Euglobin precipitation followed by dialysis against PBS.

**Storage**

Maintain refrigerated at 2-8°C for up to 2 weeks. For long term storage store at -20°C in small aliquots to prevent freeze-thaw cycles.

**Precautions**

Rat Plp1 Antibody (Center) is for research use only and not for use in diagnostic or therapeutic procedures.

**Rat Plp1 Antibody (Center) - Protein Information****Name** Plp1

## Synonyms Plp

**Function** This is the major myelin protein from the central nervous system. It plays an important role in the formation or maintenance of the multilamellar structure of myelin.

## Cellular Location

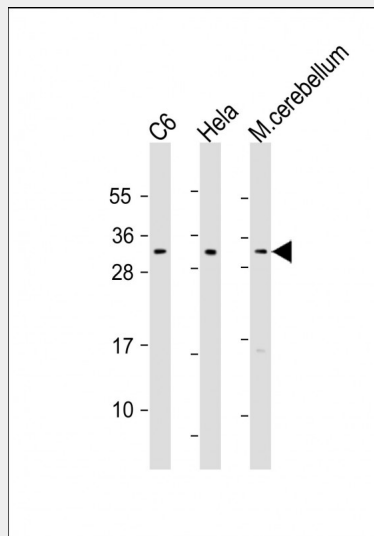
Cell membrane; Multi-pass membrane protein. Myelin membrane. Note=Colocalizes with SIRT2 in internodal regions, at paranodal axoglial junction and Schmidt- Lanterman incisures of myelin sheath.

## Rat Plp1 Antibody (Center) - Protocols

Provided below are standard protocols that you may find useful for product applications.

- [Western Blot](#)
- [Blocking Peptides](#)
- [Dot Blot](#)
- [Immunohistochemistry](#)
- [Immunofluorescence](#)
- [Immunoprecipitation](#)
- [Flow Cytometry](#)
- [Cell Culture](#)

## Rat Plp1 Antibody (Center) - Images



All lanes : Anti- at 1:1000 dilution Lane 1: C6 whole cell lysate Lane 2: HeLa whole cell lysate Lane 3: mouse cerebellum lysate Lysates/proteins at 20 µg per lane. Secondary Goat Anti-mouse IgM, (H+L), Peroxidase conjugated at 1/10000 dilution. Predicted band size : 30 kDa Blocking/Dilution buffer: 5% NFDM/TBST.

## Rat Plp1 Antibody (Center) - Background

This is the major myelin protein from the central nervous system. It plays an important role in the formation or maintenance of the multilamellar structure of myelin.

## Rat Plp1 Antibody (Center) - References

Mayer, C.A., et al. *Respir Physiol Neurobiol* 169(3):303-314(2009)  
Wang, E., et al. *J. Cell. Biochem.* 97(5):999-1016(2006)  
Gudz, T.I., et al. *J. Neurosci.* 22(17):7398-7407(2002)  
Boucher, S.E., et al. *J. Neurosci.* 22(5):1772-1783(2002)  
Yamamoto, T., et al. *Hum. Mutat.* 14 (2), 182 (1999) :