

**SELE Antibody (Ascites)**  
**Mouse Monoclonal Antibody (Mab)**  
Catalog # AM2139a**Specification**

---

**SELE Antibody (Ascites) - Product Information**

Application	<b>WB,E</b>
Primary Accession	<a href="#">P16581</a>
Other Accession	<a href="#">NP_000441.2</a>
Reactivity	<b>Human</b>
Host	<b>Mouse</b>
Clonality	<b>Monoclonal</b>
Isotype	<b>IgM</b>
Calculated MW	<b>66655</b>

**SELE Antibody (Ascites) - Additional Information****Gene ID** 6401**Other Names**

E-selectin, CD62 antigen-like family member E, Endothelial leukocyte adhesion molecule 1, ELAM-1, Leukocyte-endothelial cell adhesion molecule 2, LECAM2, CD62E, SELE, ELAM1

**Target/Specificity**

Purified His-tagged SELE protein(Fragment) was used to produced this monoclonal antibody.

**Dilution**

WB~~1:500~1000

**Format**

Mouse monoclonal antibody supplied in crude ascites with 0.09% (W/V) sodium azide.

**Storage**

Maintain refrigerated at 2-8°C for up to 2 weeks. For long term storage store at -20°C in small aliquots to prevent freeze-thaw cycles.

**Precautions**

SELE Antibody (Ascites) is for research use only and not for use in diagnostic or therapeutic procedures.

**SELE Antibody (Ascites) - Protein Information****Name** SELE**Synonyms** ELAM1**Function** Cell-surface glycoprotein having a role in immunoadhesion. Mediates in the adhesion of blood neutrophils in cytokine-activated endothelium through interaction with SELPLG/PSGL1. May

have a role in capillary morphogenesis.

#### **Cellular Location**

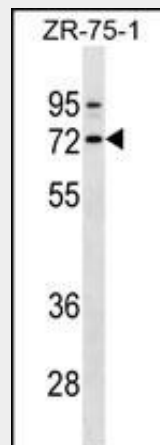
Cell membrane; Single-pass type I membrane protein

#### **SELE Antibody (Ascites) - Protocols**

Provided below are standard protocols that you may find useful for product applications.

- [Western Blot](#)
- [Blocking Peptides](#)
- [Dot Blot](#)
- [Immunohistochemistry](#)
- [Immunofluorescence](#)
- [Immunoprecipitation](#)
- [Flow Cytometry](#)
- [Cell Culture](#)

#### **SELE Antibody (Ascites) - Images**



SELE Antibody (Ascites)(Cat. #AM2139a) western blot analysis in ZR-75-1 cell line lysates (35µg/lane). This demonstrates the SELE antibody detected the SELE protein (arrow).

#### **SELE Antibody (Ascites) - Background**

The protein encoded by this gene is found in cytokine-stimulated endothelial cells and is thought to be responsible for the accumulation of blood leukocytes at sites of inflammation by mediating the adhesion of cells to the vascular lining. It exhibits structural features such as the presence of lectin- and EGF-like domains followed by short consensus repeat (SCR) domains that contain 6 conserved cysteine residues. These proteins are part of the selectin family of cell adhesion molecules. Adhesion molecules participate in the interaction between leukocytes and the endothelium and appear to be involved in the pathogenesis of atherosclerosis.

#### **SELE Antibody (Ascites) - References**

Palmer, C.N., et al. Diabetes 59(11):2945-2948(2010)

Romero, R., et al. Am. J. Obstet. Gynecol. 203 (4), 361 (2010) :  
Bailey, S.D., et al. Diabetes Care 33(10):2250-2253(2010)  
Wayman, A.M., et al. Biophys. J. 99(4):1166-1174(2010)  
Wang, Z., et al. BMC Med. Genet. 11, 127 (2010) :