

**COL3A1 Antibody**  
**Mouse Monoclonal Antibody (Mab)**  
**Catalog # AM2136b**

**Specification**

---

**COL3A1 Antibody - Product Information**

Application	WB,E
Primary Accession	<a href="#">P02461</a>
Other Accession	<a href="#">NP_000081</a>
Reactivity	Human
Host	Mouse
Clonality	Monoclonal
Isotype	IgG3
Calculated MW	138564
Antigen Region	1410-1438

**COL3A1 Antibody - Additional Information**

**Gene ID** 1281

**Other Names**

Collagen alpha-1(III) chain, COL3A1

**Target/Specificity**

This COL3A1 antibody is generated from mice immunized with a KLH conjugated synthetic peptide between 1410-1438 amino acids from human COL3A1.

**Dilution**

WB~~1:500~1000

**Format**

Purified monoclonal antibody supplied in PBS with 0.09% (W/V) sodium azide. This antibody is prepared by Euglobin precipitation followed by dialysis against PBS.

**Storage**

Maintain refrigerated at 2-8°C for up to 2 weeks. For long term storage store at -20°C in small aliquots to prevent freeze-thaw cycles.

**Precautions**

COL3A1 Antibody is for research use only and not for use in diagnostic or therapeutic procedures.

**COL3A1 Antibody - Protein Information**

**Name** COL3A1

**Function** Collagen type III occurs in most soft connective tissues along with type I collagen. Involved in regulation of cortical development. Is the major ligand of ADGRG1 in the developing brain and binding to ADGRG1 inhibits neuronal migration and activates the RhoA pathway by

coupling ADGRG1 to GNA13 and possibly GNA12.

#### Cellular Location

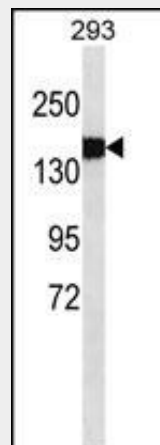
Secreted, extracellular space, extracellular matrix {ECO:0000255|PROSITE-ProRule:PRU00793}

### COL3A1 Antibody - Protocols

Provided below are standard protocols that you may find useful for product applications.

- [Western Blot](#)
- [Blocking Peptides](#)
- [Dot Blot](#)
- [Immunohistochemistry](#)
- [Immunofluorescence](#)
- [Immunoprecipitation](#)
- [Flow Cytometry](#)
- [Cell Culture](#)

### COL3A1 Antibody - Images



COL3A1 Antibody(Cat. #AM2136b) western blot analysis in 293 cell line lysates (35µg/lane). This demonstrates the COL3A1 antibody detected the COL3A1 protein (arrow).

### COL3A1 Antibody - Background

This gene encodes the pro-alpha1 chains of type III collagen, a fibrillar collagen that is found in extensible connective tissues such as skin, lung, uterus, intestine and the vascular system, frequently in association with type I collagen. Mutations in this gene are associated with Ehlers-Danlos syndrome types IV, and with aortic and arterial aneurysms. Two transcripts, resulting from the use of alternate polyadenylation signals, have been identified for this gene. [provided by R. Dagleish].

### COL3A1 Antibody - References

Romero, R., et al. Am. J. Obstet. Gynecol. 203 (4), 361 (2010) :  
Bailey, S.D., et al. Diabetes Care 33(10):2250-2253(2010)  
Romero, R., et al. Am. J. Obstet. Gynecol. 202 (5), 431 (2010) :  
Taddese, S., et al. Biochim. Biophys. Acta 1804(4):731-739(2010)

Jung, S.M., et al. Platelets 21(2):101-111(2010)