

**ESR2 Antibody**  
**Mouse Monoclonal Antibody (Mab)**  
**Catalog # AM2112b**

**Specification**

---

**ESR2 Antibody - Product Information**

Application	WB,E
Primary Accession	<a href="#">Q92731</a>
Other Accession	<a href="#">Q62986</a> , <a href="#">Q9XSW2</a> , <a href="#">Q9PTU5</a> , <a href="#">Q9XSB5</a> , <a href="#">NP_001428</a> , <a href="#">Q9TU15</a>
Reactivity	Human
Predicted	Bovine, Chicken, Pig, Rat, Sheep
Host	Mouse
Clonality	Monoclonal
Isotype	IgG1
Calculated MW	59216
Antigen Region	369-397

**ESR2 Antibody - Additional Information**

**Gene ID** 2100

**Other Names**

Estrogen receptor beta, ER-beta, Nuclear receptor subfamily 3 group A member 2, ESR2, ESTRB, NR3A2

**Target/Specificity**

This ESR2 antibody is generated from mice immunized with a KLH conjugated synthetic peptide between 369-397 amino acids from human ESR2.

**Dilution**

WB~~1:500~1000

**Format**

Purified polyclonal antibody supplied in PBS with 0.09% (W/V) sodium azide. This antibody is prepared by Saturated Ammonium Sulfate (SAS) precipitation followed by dialysis against PBS.

**Storage**

Maintain refrigerated at 2-8°C for up to 2 weeks. For long term storage store at -20°C in small aliquots to prevent freeze-thaw cycles.

**Precautions**

ESR2 Antibody is for research use only and not for use in diagnostic or therapeutic procedures.

**ESR2 Antibody - Protein Information**

**Name** ESR2

### Synonyms

 ESTRB, NR3A2

**Function** Nuclear hormone receptor. Binds estrogens with an affinity similar to that of ESR1/ER-alpha, and activates expression of reporter genes containing estrogen response elements (ERE) in an estrogen- dependent manner (PubMed:[20074560](#)).

### Cellular Location

Nucleus {ECO:0000255|PROSITE-ProRule:PRU00407, ECO:0000269|PubMed:19126643, ECO:0000269|PubMed:20074560}

### Tissue Location

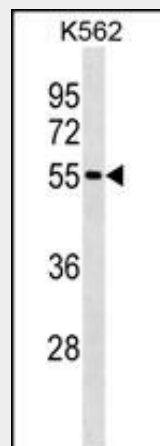
[Isoform 1]: Expressed in testis and ovary, and at a lower level in heart, brain, placenta, liver, skeletal muscle, spleen, thymus, prostate, colon, bone marrow, mammary gland and uterus Also found in uterine bone, breast, and ovarian tumor cell lines, but not in colon and liver tumors. [Isoform 4]: Expressed in the testis. [Isoform 6]: Expressed in testis, placenta, skeletal muscle, spleen and leukocytes, and at a lower level in heart, lung, liver, kidney, pancreas, thymus, prostate, colon, small intestine, bone marrow, mammary gland and uterus. Not expressed in brain.

### ESR2 Antibody - Protocols

Provided below are standard protocols that you may find useful for product applications.

- [Western Blot](#)
- [Blocking Peptides](#)
- [Dot Blot](#)
- [Immunohistochemistry](#)
- [Immunofluorescence](#)
- [Immunoprecipitation](#)
- [Flow Cytometry](#)
- [Cell Culture](#)

### ESR2 Antibody - Images



ESR2 Antibody(Cat. #AM2112b) western blot analysis in K562 cell line lysates (35µg/lane).This demonstrates the ESR2 antibody detected the ESR2 protein (arrow).

### ESR2 Antibody - Background

This gene encodes a member of the family of estrogen receptors and superfamily of nuclear receptor transcription

factors. The gene product contains an N-terminal DNA binding domain and C-terminal ligand binding domain and is localized to the nucleus, cytoplasm, and mitochondria. Upon binding to 17beta-estradiol or related ligands, the encoded protein forms homo- or hetero-dimers that interact with specific DNA sequences to activate transcription. Some isoforms dominantly inhibit the activity of other estrogen receptor family members. Several alternatively spliced transcript variants of this gene have been described, but the full-length nature of some of these variants has not been fully characterized.

#### **ESR2 Antibody - References**

Fang, Y.J., et al. Tumour Biol. 31(6):651-658(2010)  
Hayes, D.F., et al. Clin. Pharmacol. Ther. 88(5):626-629(2010)  
Romero, R., et al. Am. J. Obstet. Gynecol. 203 (4), 361 (2010) :  
Wurster, M., et al. Oncol. Rep. 24(3):653-659(2010)  
Paulus, J.K., et al. Lung Cancer (2010) In press :