

**CTGF Antibody**  
**Mouse Monoclonal Antibody (Mab)**  
**Catalog # AM2095b**

**Specification**

---

**CTGF Antibody - Product Information**

Application	WB,E
Primary Accession	<a href="#">P29279</a>
Other Accession	<a href="#">O9R1E9</a> , <a href="#">O19113</a> , <a href="#">P29268</a> , <a href="#">NP_001892.1</a>
Reactivity	Human
Predicted	Mouse, Pig, Rat
Host	Mouse
Clonality	Monoclonal
Isotype	IgG2b
Calculated MW	38091
Antigen Region	166-193

**CTGF Antibody - Additional Information**

**Gene ID** 1490

**Other Names**

Connective tissue growth factor, CCN family member 2, Hypertrophic chondrocyte-specific protein 24, Insulin-like growth factor-binding protein 8, IBP-8, IGF-binding protein 8, IGFBP-8, CTGF, CCN2, HCS24, IGFBP8

**Target/Specificity**

This CTGF antibody is generated from mice immunized with a KLH conjugated synthetic peptide between 166-193 amino acids from human CTGF.

**Dilution**

WB~~1:100

**Format**

Purified monoclonal antibody supplied in PBS with 0.09% (W/V) sodium azide. This antibody is purified through a protein G column, followed by dialysis against PBS.

**Storage**

Maintain refrigerated at 2-8°C for up to 2 weeks. For long term storage store at -20°C in small aliquots to prevent freeze-thaw cycles.

**Precautions**

CTGF Antibody is for research use only and not for use in diagnostic or therapeutic procedures.

**CTGF Antibody - Protein Information**

**Name** CCN2 ([HGNC:2500](#))

**Function** Major connective tissue mitogen secreted by vascular endothelial cells. Promotes proliferation and differentiation of chondrocytes. Mediates heparin- and divalent cation-dependent cell adhesion in many cell types including fibroblasts, myofibroblasts, endothelial and epithelial cells. Enhances fibroblast growth factor- induced DNA synthesis.

**Cellular Location**

Secreted, extracellular space, extracellular matrix {ECO:0000250|UniProtKB:P29268}. Secreted {ECO:0000250|UniProtKB:P29268}

**Tissue Location**

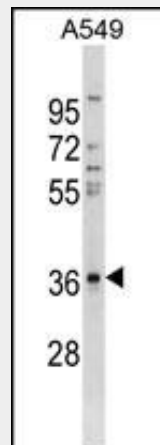
Expressed in bone marrow and thymic cells. Also expressed one of two Wilms tumors tested.

**CTGF Antibody - Protocols**

Provided below are standard protocols that you may find useful for product applications.

- [Western Blot](#)
- [Blocking Peptides](#)
- [Dot Blot](#)
- [Immunohistochemistry](#)
- [Immunofluorescence](#)
- [Immunoprecipitation](#)
- [Flow Cytometry](#)
- [Cell Culture](#)

**CTGF Antibody - Images**



CTGF Antibody(Cat. #AM2095b) western blot analysis in A549 cell line lysates (35µg/lane).This demonstrates the CTGF antibody detected the CTGF protein (arrow).

**CTGF Antibody - Background**

The protein encoded by this gene is a mitogen that is secreted by vascular endothelial cells. The encoded protein plays a role in chondrocyte proliferation and differentiation, cell adhesion in many cell types, and is related to platelet-derived growth factor. Certain polymorphisms in this gene have been linked with a higher incidence of systemic sclerosis. [provided by RefSeq].

### **CTGF Antibody - References**

- Behrens, M.E., et al. *Oncogene* 29(42):5667-5677(2010)
- Cunningham, J.L., et al. *Eur. J. Endocrinol.* 163(4):691-697(2010)
- Ito, Y., et al. *Am. J. Physiol. Renal Physiol.* 299 (3), F545-F558 (2010) :
- Adler, S.G., et al. *Clin J Am Soc Nephrol* 5(8):1420-1428(2010)
- Johnatty, S.E., et al. *PLoS Genet.* 6 (7), E1001016 (2010) :