

SERPINC1 Antibody
Mouse Monoclonal Antibody (Mab)
Catalog # AM2053b

Specification

SERPINC1 Antibody - Product Information

| | |
|-------------------|-----------------------------|
| Application | WB,E |
| Primary Accession | P01008 |
| Other Accession | NP_000479.1 |
| Reactivity | Human, Rat |
| Host | Mouse |
| Clonality | Monoclonal |
| Isotype | IgG1 |
| Calculated MW | 52602 |
| Antigen Region | 364-393 |

SERPINC1 Antibody - Additional Information

Gene ID 462

Other Names

Antithrombin-III, ATIII, Serpin C1, SERPINC1, AT3

Target/Specificity

This SERPINC1 antibody is generated from mice immunized with a KLH conjugated synthetic peptide between 364-393 amino acids from human SERPINC1.

Dilution

WB~~1:500~1000

Format

Purified polyclonal antibody supplied in PBS with 0.09% (W/V) sodium azide. This antibody is prepared by Saturated Ammonium Sulfate (SAS) precipitation followed by dialysis against PBS.

Storage

Maintain refrigerated at 2-8°C for up to 2 weeks. For long term storage store at -20°C in small aliquots to prevent freeze-thaw cycles.

Precautions

SERPINC1 Antibody is for research use only and not for use in diagnostic or therapeutic procedures.

SERPINC1 Antibody - Protein Information

Name SERPINC1

Synonyms AT3

Function Most important serine protease inhibitor in plasma that regulates the blood coagulation cascade (PubMed:[15140129](#), PubMed:[15853774](#)). AT-III inhibits thrombin, matrilysin-3/TMPRSS7, as well as factors IXa, Xa and XIa (PubMed:[15140129](#)). Its inhibitory activity is greatly enhanced in the presence of heparin.

Cellular Location

Secreted, extracellular space.

Tissue Location

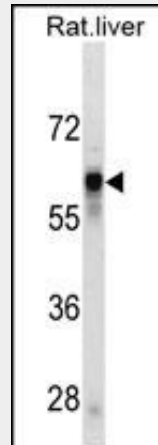
Found in plasma.

SERPINC1 Antibody - Protocols

Provided below are standard protocols that you may find useful for product applications.

- [Western Blot](#)
- [Blocking Peptides](#)
- [Dot Blot](#)
- [Immunohistochemistry](#)
- [Immunofluorescence](#)
- [Immunoprecipitation](#)
- [Flow Cytometry](#)
- [Cell Culture](#)

SERPINC1 Antibody - Images



SERPINC1 Antibody (Cat. #AM2053b) western blot analysis in rat liver tissue lysates (35µg/lane). This demonstrates the SERPINC1 antibody detected the SERPINC1 protein (arrow).

SERPINC1 Antibody - Background

The protein encoded by this gene is a plasma protease inhibitor and a member of the serpin superfamily. This protein inhibits thrombin as well as other activated serine proteases of the coagulation system, and it regulates the blood coagulation cascade. The protein includes two functional domains: the heparin binding-domain at the N-terminus of the mature protein, and the reactive site domain at the C-terminus. The inhibitory activity is enhanced by the presence of heparin. More than 120 mutations have been identified for this gene, many of which are known to cause

antithrombin-III deficiency.

SERPINC1 Antibody - References

- Romero, R., et al. Am. J. Obstet. Gynecol. 203 (4), 361 (2010) :
Bailey, S.D., et al. Diabetes Care 33(10):2250-2253(2010)
Zhang, G.S., et al. Blood Coagul. Fibrinolysis 21(6):588-591(2010)
Bunkenborg, J., et al. Proteomics 4(2):454-465(2004)
Picard, V., et al. Biochemistry 34(26):8433-8440(1995)