

**GAST Antibody(Ascites)**  
**Mouse Monoclonal Antibody (Mab)**  
**Catalog # AM2046a**

**Specification**

---

**GAST Antibody(Ascites) - Product Information**

Application	WB,E
Primary Accession	<a href="#">P01350</a>
Other Accession	<a href="#">NP_000796.1</a>
Reactivity	Human
Host	Mouse
Clonality	Monoclonal
Isotype	IgG1
Calculated MW	11394
Antigen Region	49-78

**GAST Antibody(Ascites) - Additional Information**

**Gene ID** 2520

**Other Names**

Gastrin, Gastrin-71, Gastrin component I, Gastrin-52, G52, Big gastrin, Gastrin component II, Gastrin-34, G34, Gastrin, Gastrin component III, Gastrin-17, G17, Gastrin-14, G14, Gastrin-6, G6, GAST, GAS

**Target/Specificity**

This GAST antibody is generated from mice immunized with a KLH conjugated synthetic peptide between 49-78 amino acids from human GAST.

**Dilution**

WB~~1:100~1600

**Format**

Mouse monoclonal antibody supplied in crude ascites with 0.09% (W/V) sodium azide.

**Storage**

Maintain refrigerated at 2-8°C for up to 2 weeks. For long term storage store at -20°C in small aliquots to prevent freeze-thaw cycles.

**Precautions**

GAST Antibody(Ascites) is for research use only and not for use in diagnostic or therapeutic procedures.

**GAST Antibody(Ascites) - Protein Information**

**Name** GAST

**Synonyms** GAS

**Function** Gastrin stimulates the stomach mucosa to produce and secrete hydrochloric acid and the pancreas to secrete its digestive enzymes. It also stimulates smooth muscle contraction and increases blood circulation and water secretion in the stomach and intestine.

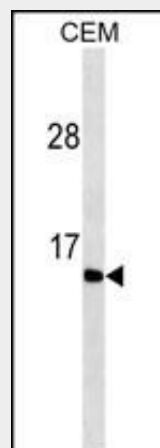
**Cellular Location**  
Secreted.

### **GAST Antibody(Ascites) - Protocols**

Provided below are standard protocols that you may find useful for product applications.

- [Western Blot](#)
- [Blocking Peptides](#)
- [Dot Blot](#)
- [Immunohistochemistry](#)
- [Immunofluorescence](#)
- [Immunoprecipitation](#)
- [Flow Cytometry](#)
- [Cell Culture](#)

### **GAST Antibody(Ascites) - Images**



GAST Antibody (Cat. #AM2046a) western blot analysis in CEM cell line lysates (35µg/lane). This demonstrates the GAST antibody detected the GAST protein (arrow).

### **GAST Antibody(Ascites) - Background**

Gastrin is a hormone whose main function is to stimulate secretion of hydrochloric acid by the gastric mucosa, which results in gastrin formation inhibition. This hormone also acts as a mitogenic factor for gastrointestinal epithelial cells. Gastrin has two biologically active peptide forms, G34 and G17. [provided by RefSeq].

### **GAST Antibody(Ascites) - References**

Kovac, S., et al. FEBS Lett. 584(21):4413-4418(2010)  
Ferrand, A., et al. Am. J. Physiol. Gastrointest. Liver Physiol. 299 (1), G220-G227 (2010) :  
El Ali, Z., et al. J. Endocrinol. Invest. 33(3):186-191(2010)  
Huang, C.L., et al. Pharmacology 85(3):131-135(2010)

Leja, M., et al. Dig. Dis. Sci. 54(11):2377-2384(2009)