

CRP Antibody (Ascites)
Mouse Monoclonal Antibody (Mab)
Catalog # AM2041a

Specification

CRP Antibody (Ascites) - Product Information

Application	WB,E
Primary Accession	P02741
Other Accession	NP_000558.2
Reactivity	Human
Host	Mouse
Clonality	Monoclonal
Isotype	IgG3
Calculated MW	25039
Antigen Region	194-221

CRP Antibody (Ascites) - Additional Information

Gene ID 1401

Other Names

C-reactive protein, C-reactive protein(1-205), CRP, PTX1

Target/Specificity

This CRP antibody is generated from mice immunized with a KLH conjugated synthetic peptide between 194-221 amino acids from human CRP.

Dilution

WB~~1:500~8000

Format

Mouse monoclonal antibody supplied in crude ascites with 0.09% (W/V) sodium azide.

Storage

Maintain refrigerated at 2-8°C for up to 2 weeks. For long term storage store at -20°C in small aliquots to prevent freeze-thaw cycles.

Precautions

CRP Antibody (Ascites) is for research use only and not for use in diagnostic or therapeutic procedures.

CRP Antibody (Ascites) - Protein Information

Name CRP

Synonyms PTX1

Function Displays several functions associated with host defense: it promotes agglutination,

bacterial capsular swelling, phagocytosis and complement fixation through its calcium-dependent binding to phosphorylcholine. Can interact with DNA and histones and may scavenge nuclear material released from damaged circulating cells.

Cellular Location

Secreted.

Tissue Location

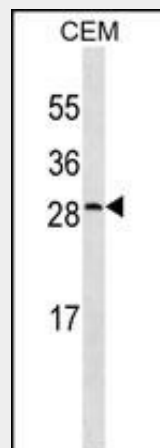
Found in plasma.

CRP Antibody (Ascites) - Protocols

Provided below are standard protocols that you may find useful for product applications.

- [Western Blot](#)
- [Blocking Peptides](#)
- [Dot Blot](#)
- [Immunohistochemistry](#)
- [Immunofluorescence](#)
- [Immunoprecipitation](#)
- [Flow Cytometry](#)
- [Cell Culture](#)

CRP Antibody (Ascites) - Images



CRP Antibody (Cat. #AM2041a) western blot analysis in CEM cell line lysates (35µg/lane). This demonstrates the CRP antibody detected the CRP protein (arrow).

CRP Antibody (Ascites) - Background

The protein encoded by this gene belongs to the pentaxin family. It is involved in several host defense related functions based on its ability to recognize foreign pathogens and damaged cells of the host and to initiate their elimination by interacting with humoral and cellular effector systems in the blood. Consequently, the level of this protein in plasma increases greatly during acute phase response to tissue injury, infection, or other inflammatory stimuli.

CRP Antibody (Ascites) - References

Brindle, E., et al. J. Immunol. Methods 362 (1-2), 112-120 (2010) :
Lim, L.S., et al. Invest. Ophthalmol. Vis. Sci. 51(9):4458-4463(2010)
Marott, S.C., et al. J. Am. Coll. Cardiol. 56(10):789-795(2010)
Szczesny, G., et al. Arch Orthop Trauma Surg (2010) In press :
Kuhlenbaeumer, G., et al. Cerebrovasc. Dis. 30(5):476-482(2010)