

**SPRED1 Antibody**  
**Mouse Monoclonal Antibody (Mab)**  
**Catalog # AM2036b**

**Specification**

---

**SPRED1 Antibody - Product Information**

Application	WB,E
Primary Accession	<a href="#">O7Z699</a>
Other Accession	<a href="#">NP_689807.1</a>
Reactivity	Human, Mouse
Host	Mouse
Clonality	Monoclonal
Isotype	IgG1
Calculated MW	50477

**SPRED1 Antibody - Additional Information**

**Gene ID** 161742

**Other Names**

Sprouty-related, EVH1 domain-containing protein 1, Spred-1, hSpred1, SPRED1

**Target/Specificity**

Purified His-tagged SPRED1 protein(Fragment) was used to produced this monoclonal antibody.

**Dilution**

WB~~1:500~1000

**Format**

Purified monoclonal antibody supplied in PBS with 0.09% (W/V) sodium azide. This antibody is purified through a protein G column, followed by dialysis against PBS.

**Storage**

Maintain refrigerated at 2-8°C for up to 2 weeks. For long term storage store at -20°C in small aliquots to prevent freeze-thaw cycles.

**Precautions**

SPRED1 Antibody is for research use only and not for use in diagnostic or therapeutic procedures.

**SPRED1 Antibody - Protein Information**

**Name** SPRED1

**Function** Tyrosine kinase substrate that inhibits growth-factor- mediated activation of MAP kinase (By similarity). Negatively regulates hematopoiesis of bone marrow (By similarity). Inhibits fibroblast growth factor (FGF)-induced retinal lens fiber differentiation, probably by inhibiting FGF-mediated phosphorylation of ERK1/2 (By similarity). Attenuates actin stress fiber formation via inhibition of TESK1-mediated phosphorylation of cofilin (PubMed:[18216281](#)). Inhibits TGFB-induced

epithelial-to-mesenchymal transition in lens epithelial cells (By similarity).

#### Cellular Location

Cell membrane; Peripheral membrane protein. Membrane, caveola; Peripheral membrane protein. Nucleus Note=Localized in cholesterol-rich membrane raft/caveola fractions

#### Tissue Location

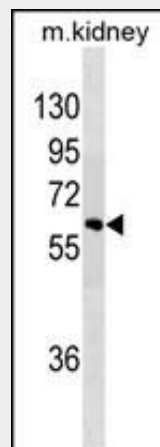
Weakly expressed in embryonic cell line HEK293.

### SPRED1 Antibody - Protocols

Provided below are standard protocols that you may find useful for product applications.

- [Western Blot](#)
- [Blocking Peptides](#)
- [Dot Blot](#)
- [Immunohistochemistry](#)
- [Immunofluorescence](#)
- [Immunoprecipitation](#)
- [Flow Cytometry](#)
- [Cell Culture](#)

### SPRED1 Antibody - Images



SPRED1 Antibody (Cat. #AM2036b) western blot analysis in mouse kidney tissue lysates (35µg/lane). This demonstrates the SPRED1 antibody detected the SPRED1 protein (arrow).

### SPRED1 Antibody - Background

The protein encoded by this gene is a member of the Sprouty family of proteins and is phosphorylated by tyrosine kinase in response to several growth factors. The encoded protein can act as a homodimer or as a heterodimer with SPRED2 to regulate activation of the MAP kinase cascade. Defects in this gene are a cause of neurofibromatosis type 1-like syndrome (NFLS). [provided by RefSeq].

### SPRED1 Antibody - References

Bailey, S.D., et al. Diabetes Care 33(10):2250-2253(2010)

Batz, C., et al. Blood 115(12):2557-2558(2010)  
Messiaen, L., et al. JAMA 302(19):2111-2118(2009)  
Talmud, P.J., et al. Am. J. Hum. Genet. 85(5):628-642(2009)  
Spurlock, G., et al. J. Med. Genet. 46(7):431-437(2009)