

CALCA/CT Antibody(Ascites)
Mouse Monoclonal Antibody (Mab)
Catalog # AM2021a

Specification

CALCA/CT Antibody(Ascites) - Product Information

Application	WB,E
Primary Accession	P01258
Other Accession	NP_001029124.1 , NP_001732.1
Reactivity	Human
Host	Mouse
Clonality	Monoclonal
Isotype	IgM
Calculated MW	15467
Antigen Region	104-132

CALCA/CT Antibody(Ascites) - Additional Information

Gene ID 796

Other Names

Calcitonin, Calcitonin, Katalcalcin, Calcitonin carboxyl-terminal peptide, CCP, PDN-21, CALCA, CALC1

Target/Specificity

This CALCA/CT antibody is generated from mice immunized with a KLH conjugated synthetic peptide between 104-132 amino acids from human CALCA/CT.

Dilution

WB~~1:1000~8000

Format

Mouse monoclonal antibody supplied in crude ascites with 0.09% (W/V) sodium azide.

Storage

Maintain refrigerated at 2-8°C for up to 2 weeks. For long term storage store at -20°C in small aliquots to prevent freeze-thaw cycles.

Precautions

CALCA/CT Antibody(Ascites) is for research use only and not for use in diagnostic or therapeutic procedures.

CALCA/CT Antibody(Ascites) - Protein Information

Name CALCA ([HGNC:1437](#))

Synonyms CALC1

Function [Calcitonin]: Calcitonin is a peptide hormone that causes a rapid but short-lived drop in the level of calcium and phosphate in blood by promoting the incorporation of those ions in the bones. Calcitonin function is mediated by the calcitonin receptor/CALCR and the CALCR-RAMP2 (AMYR2) receptor complex (PubMed:[35324283](#)).

Cellular Location

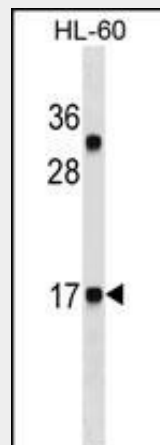
Secreted.

CALCA/CT Antibody(Ascites) - Protocols

Provided below are standard protocols that you may find useful for product applications.

- [Western Blot](#)
- [Blocking Peptides](#)
- [Dot Blot](#)
- [Immunohistochemistry](#)
- [Immunofluorescence](#)
- [Immunoprecipitation](#)
- [Flow Cytometry](#)
- [Cell Culture](#)

CALCA/CT Antibody(Ascites) - Images



CALCA/CT Antibody (Cat. #AM2021a) western blot analysis in HL-60 cell line lysates (35µg/lane). This demonstrates the CALCA/CT antibody detected the CALCA/CT protein (arrow).

CALCA/CT Antibody(Ascites) - Background

This gene encodes the peptide hormones calcitonin, calcitonin gene-related peptide and katacalcin by tissue-specific alternative RNA splicing of the gene transcripts and cleavage of inactive precursor proteins. Calcitonin is involved in calcium regulation and acts to regulate phosphorus metabolism. Calcitonin gene-related peptide functions as a vasodilator while katacalcin is a calcium-lowering peptide. Multiple transcript variants encoding different isoforms have been found for this gene.

CALCA/CT Antibody(Ascites) - References

Giroux, S., et al. Bone 47(5):975-981(2010)

Bailey, S.D., et al. Diabetes Care 33(10):2250-2253(2010)
Lee, J.Y., et al. Korean J Lab Med 30(4):406-413(2010)
Giovannella, L., et al. Clin. Chem. Lab. Med. 48(8):1163-1165(2010)
Hatzistilianou, M. ScientificWorldJournal 10, 1941-1946 (2010) :