

ZWINT Antibody
Mouse Monoclonal Antibody (Mab)
Catalog # AM2010b

Specification

ZWINT Antibody - Product Information

| | |
|-------------------|--|
| Application | WB,E |
| Primary Accession | O95229 |
| Other Accession | NP_001005413.1 , NP_008988.2 |
| Reactivity | Human |
| Host | Mouse |
| Clonality | Monoclonal |
| Isotype | IgM |
| Calculated MW | 31293 |

ZWINT Antibody - Additional Information

Gene ID 11130

Other Names

ZW10 interactor, ZW10-interacting protein 1, Zwint-1, ZWINT

Target/Specificity

Purified His-tagged ZWINT protein(Fragment) was used to produced this monoclonal antibody.

Dilution

WB~~1:500~1000

Format

Purified monoclonal antibody supplied in PBS with 0.09% (W/V) sodium azide. This antibody is prepared by Euglobin precipitation followed by dialysis against PBS.

Storage

Maintain refrigerated at 2-8°C for up to 2 weeks. For long term storage store at -20°C in small aliquots to prevent freeze-thaw cycles.

Precautions

ZWINT Antibody is for research use only and not for use in diagnostic or therapeutic procedures.

ZWINT Antibody - Protein Information

Name ZWINT

Function Part of the MIS12 complex, which is required for kinetochore formation and spindle checkpoint activity. Required to target ZW10 to the kinetochore at prometaphase.

Cellular Location

Nucleus. Chromosome, centromere, kinetochore. Note=Localizes to kinetochores from late

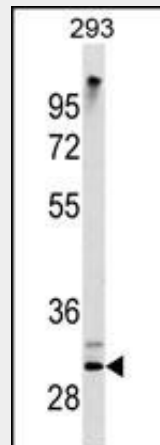
prophase to anaphase

ZWINT Antibody - Protocols

Provided below are standard protocols that you may find useful for product applications.

- [Western Blot](#)
- [Blocking Peptides](#)
- [Dot Blot](#)
- [Immunohistochemistry](#)
- [Immunofluorescence](#)
- [Immunoprecipitation](#)
- [Flow Cytometry](#)
- [Cell Culture](#)

ZWINT Antibody - Images



ZWINT Antibody (Cat. #AM2010b) western blot analysis in 293 cell line lysates (35µg/lane). This demonstrates the ZWINT antibody detected the ZWINT protein (arrow).

ZWINT Antibody - Background

This gene encodes a protein that is clearly involved in kinetochore function although an exact role is not known. It interacts with ZW10, another kinetochore protein, possibly regulating the association between ZW10 and kinetochores. The encoded protein localizes to prophase kinetochores before ZW10 does and it remains detectable on the kinetochore until late anaphase. It has a uniform distribution in the cytoplasm of interphase cells. Alternatively spliced transcript variants encoding different isoforms have been found for this gene.

ZWINT Antibody - References

Brendle, A., et al. *Eur. J. Cancer* 45(3):435-442(2009)
Famulski, J.K., et al. *J. Cell Biol.* 180(3):507-520(2008)
Morgan, A.R., et al. *Am. J. Med. Genet. B Neuropsychiatr. Genet.* 144B (6), 762-770 (2007) :
Lin, Y.T., et al. *Oncogene* 25(52):6901-6914(2006)
Kops, G.J., et al. *J. Cell Biol.* 169(1):49-60(2005)