

T Antibody (Ascites)
Mouse Monoclonal Antibody (Mab)
Catalog # AM1993a

Specification

T Antibody (Ascites) - Product Information

| | |
|-------------------|------------------------------------------------------|
| Application | WB,E |
| Primary Accession | O15178 |
| Other Accession | O07998 , NP_003172.1 |
| Reactivity | Human |
| Predicted | Zebrafish |
| Host | Mouse |
| Clonality | Monoclonal |
| Isotype | IgM |
| Calculated MW | 47443 |
| Antigen Region | 201-228 |

T Antibody (Ascites) - Additional Information

Gene ID 6862

Other Names

Brachyury protein, Protein T, T

Target/Specificity

This T antibody is generated from mice immunized with a KLH conjugated synthetic peptide between 201-228 amino acids from human T.

Dilution

WB~~1:1000~8000

Format

Mouse monoclonal antibody supplied in crude ascites with 0.09% (W/V) sodium azide.

Storage

Maintain refrigerated at 2-8°C for up to 2 weeks. For long term storage store at -20°C in small aliquots to prevent freeze-thaw cycles.

Precautions

T Antibody (Ascites) is for research use only and not for use in diagnostic or therapeutic procedures.

T Antibody (Ascites) - Protein Information

Name TBXT ([HGNC:11515](#))

Synonyms T

Function Involved in the transcriptional regulation of genes required for mesoderm formation and differentiation. Binds to a palindromic T site 5'-TTCACACCTAGGTGTGAA-3' DNA sequence and activates gene transcription when bound to such a site.

Cellular Location

Nucleus

Tissue Location

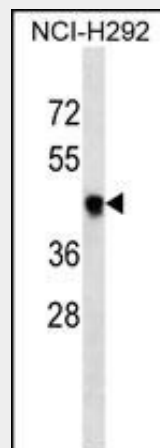
Detected in testis, but not in other, normal tissues. Detected in lung tumors (at protein level)

T Antibody (Ascites) - Protocols

Provided below are standard protocols that you may find useful for product applications.

- [Western Blot](#)
- [Blocking Peptides](#)
- [Dot Blot](#)
- [Immunohistochemistry](#)
- [Immunofluorescence](#)
- [Immunoprecipitation](#)
- [Flow Cytometry](#)
- [Cell Culture](#)

T Antibody (Ascites) - Images



T Antibody (Cat. #AM1993a) western blot analysis in NCI-H292 cell line lysates (35µg/lane). This demonstrates the T antibody detected the T protein (arrow).

T Antibody (Ascites) - Background

The protein encoded by this gene is an embryonic nuclear transcription factor that binds to a specific DNA element, the palindromic T-site. It binds through a region in its N-terminus, called the T-box, and effects transcription of genes required for mesoderm formation and differentiation. The protein is localized to notochord-derived cells.

T Antibody (Ascites) - References

Jambhekar, N.A., et al. Arch. Pathol. Lab. Med. 134(8):1181-1187(2010)

Docherty, S.J., et al. BMC Genet. 11, 61 (2010) :
Yang, X.R., et al. Nat. Genet. 41(11):1176-1178(2009)
Oakley, G.J., et al. Mod. Pathol. 21(12):1461-1469(2008)
Bondue, A., et al. Cell Stem Cell 3(1):69-84(2008)